

igubal® Pillow Block - Product range

ESTM - Pillow block bearing



- High radial loads
- Can be used in liquid media
- Space-saving design, easy to fit
- Predictable lifetime
- Maintenance free, self-lubricating
- Dimensional E series acc. to standard DIN ISO 12240
- Adapter available



Order key

Type Size

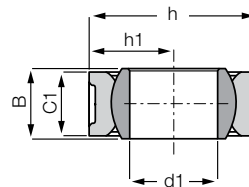
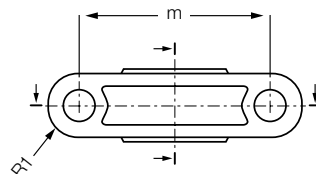
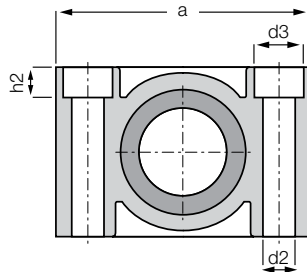
E **ST** **M** - **05**

Dimensional E series

Pillow block bearing

Metric

Inner-Ø [mm]



Material:

Housing: **igumid G** ▶ Page 1373
Spherical ball: **iglide® L280 (W300)***

Dimensions [mm]

Part No.	d1 [E10]	d2	d3	h	h1	h2	a	m	C1	B	R1	Max. pivot angle
ESTM-08	8.0	4.5	-	19	9.5	-	31.0	22.0	9.0	8.0	4.5	22°
ESTM-10	10.0	5.5	-	22	11	-	36.0	26.0	10.0	9.0	5.0	22°
ESTM-12	12.0	5.5	-	26	13	-	38.0	28.0	10.0	10.0	5.0	22°
ESTM-16	16.0	6.6	10.6	34.0	17.0	6.4	50.0	37.0	13.0	13.0	6.5	22°
ESTM-20	20.0	9.0	14.0	40.0	20.0	8.6	62.0	46.0	16.0	16.0	8.0	22°
ESTM-25	25.0	9.0	14.0	48.0	24.0	8.6	72.0	54.0	18.0	20.0	9.0	20°
ESTM-30	30.0	11.0	17.0	56.0	28.0	10.6	86.0	64.0	22.0	22.0	11.0	20°

Technical data

Part No.	Max. static radial tensile strength		Max. static radial compressive strength		Max. axial strength		Max. torque fixing holes	Weight
	Short term	Long term	Short term	Long term	Short term	Long term		
	[lbs]	[lbs]	[lbs]	[lbs]	[lbs]	[lbs]	[ft lbs]	[g]
ESTM-08	560	280	965	480	135	65	.95	5.0
ESTM-10	765	380	1190	595	155	80	1.84	7.1
ESTM-12	1010	505	1460	730	165	85	1.84	9.0
ESTM-16	1505	750	1910	955	250	125	3.30	17.5
ESTM-20	1910	955	2470	1290	315	155	3.30	27.4
ESTM-25	3035	1515	4150	2080	515	255	7.75	50.8
ESTM-30 ²⁵⁾	2250	1125	3710	1855	560	280	7.75	79.7

* Due to the different manufacturing method, the load values of the ESTM-30 are lower than ESTM-25

▶ Tolerance Table, Page 75

X-ON Electronics

Largest Supplier of Electrical and Electronic Components

Click to view similar products for [Other Tools](#) category:

Click to view products by [Iigus](#) manufacturer:

Other Similar products are found below :

[CR-05FL7--150R](#) [CR-05FL7--698K](#) [899-2-KT46](#) [899-5-KT46](#) [CR-0AFL4--332K](#) [CR-12FP4--260R](#) [5718X-01PD-19RO](#) [CRCW04021100FRT7](#)
[CRCW04021961FRT7](#) [5800-0090](#) [CRCW04024021FRT7](#) [CRCW040254R9FRT7](#) [CRCW0603102JRT5](#) [59065-5](#) [00-8273-RDPP](#) [00-8729-WHPP](#)
[593033](#) [593058](#) [593072](#) [593564100](#) [593575](#) [593591](#) [593593](#) [LTI506SBLAMNBL](#) [CRCW08052740FRT1](#) [LUC-012S070DSM](#) [LUC-](#)
[018S070DSP](#) [599-2021-3-NME](#) [599-JJ-2021-03](#) [00-5080-YWPP](#) [5E4750/01-20R0-T/R](#) [LW1A-L1-GD](#) [LW1A-L1-GL](#) [LW1A-P1-GD](#) [LW1L-](#)
[A1C10V-GL](#) [LW1L-M1C70-A](#) [0202-0173](#) [00-9089-RDPP](#) [CRCW2010331JR02](#) [01-1003W-8/32-10](#) [601-GP-08-KT39](#) [601-JJ-06](#) [601-SPB](#)
[601YSY](#) [602-JJ-03](#) [602SPB](#) [602Z](#) [603-JJ-07-FP](#) [603-JJY-04](#) [604J](#)