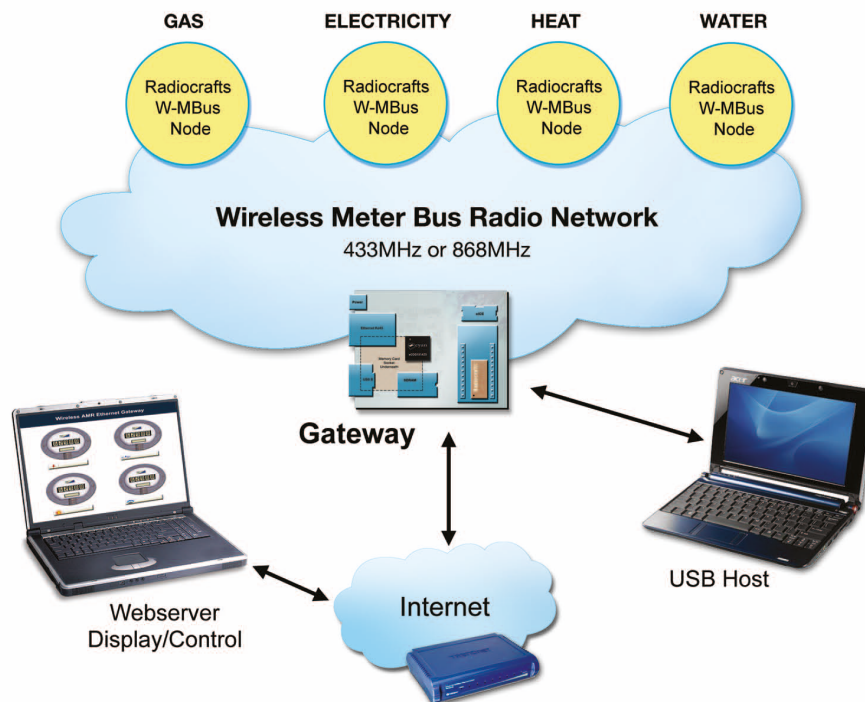


USB/Ethernet Gateway Solution for Radiocrafts RC11x0 Wireless M-Bus

Supports EN 13757-4:2005 mode S, T and R2

Cyan and Radiocrafts USB/Ethernet Gateway for Wireless M-Bus provides back channel connectivity, linking the RF network to the utility company via the internet but also with USB peripheral capability and a memory card connector. It is a board level solution, including power socket and a connector for the Cyan eICE debug interface.

The below diagram outlines the philosophy:



Part Number	Description
mCOG-UPE-1X-RCWMB-B1-8	Board 868MHz W M-Bus + Ethernet + USB peripheral
EVALKIT-UPE-1X-RCWMB-B1-8	Board + Dongle + Cables + CyanIDE® CD
DEVKIT1X-USB/ETHERNET	USB/Ethernet Development Kit

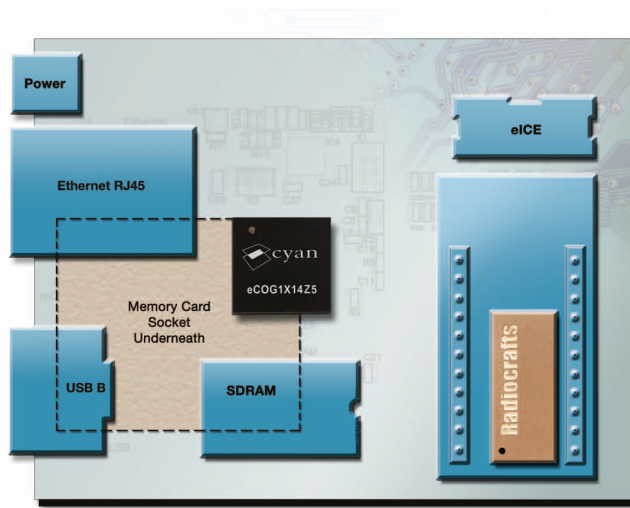


Image for illustrative purposes only

Applications

- Automatic Meter Reading (AMR)
- Advanced Metering Infrastructure (AMI)
- Electricity meters
- Gas and Water meters
- Heat meters, Heat cost allocators
- Readers and concentrator

Radiocrafts RC1180 Wireless M-Bus Multi-Mode RF Transceiver Module Features:

- Embedded Wireless M-Bus protocol supporting EN 13757-4:2005 mode S, T and R2
- 2 channels (868.3, 868.95 MHz) in mode S and T
- 10 channels in mode R2 (868.03 + n x 0.06 MHz)
- Configurable Manufacturer ID and serial number
- Conforms with EU R&TTE directive (EN 300 220, EN 301 489, EN 60950)
- Designed for EX compliance

433MHz is also available please contact:
sales@cyantechonology.com for details

Cyan MCU Features include:

- 70MHz eCOG1X14Z5
- 512KB Flash / 24KB RAM
- 10/100 Ethernet MAC
- USB 2.0 controller
- 5 multi-purpose timers
- Code security feature

Software included with CyanIDE®:

- GNU C Compiler / Debugger, Eclipse IDE
- Wireless M-Bus node to Webserver demo
- Open source TCP/IP stack with support for HTTP, FTP, SMTP, Telnet, DHCP, TFTP, BOOTP, SNMP & SNMP
- FAT16 / FAT32 filing system
- SD / SDHC / MMC low-level device interface
- USB CDC, HID and MSD (mass-storage) device classes

Gateway Board Key Features:

- Small size approx. 2" x 3"
- eCOG1X14Z5 MCU
- RC1180/RC1140-MBUS Wireless M-Bus module
- 16MB external SDRAM
- SD/SDHC/MMC socket
- 100Base-T Ethernet PHY and RJ45 connector
- Preprogrammed MAC address and serial number
- USB 2.0 full-speed peripheral (B socket)
- Power connector
- eICE MCU debug interface
- Connectors arranged for easy panel mounting
- 0-70 deg C operating temperature range
- FCC/ETSI/CE approvals pending

X-ON Electronics

Largest Supplier of Electrical and Electronic Components

Click to view similar products for [CYAN](#) manufacturer:

Other Similar products are found below :

[CYAN](#)