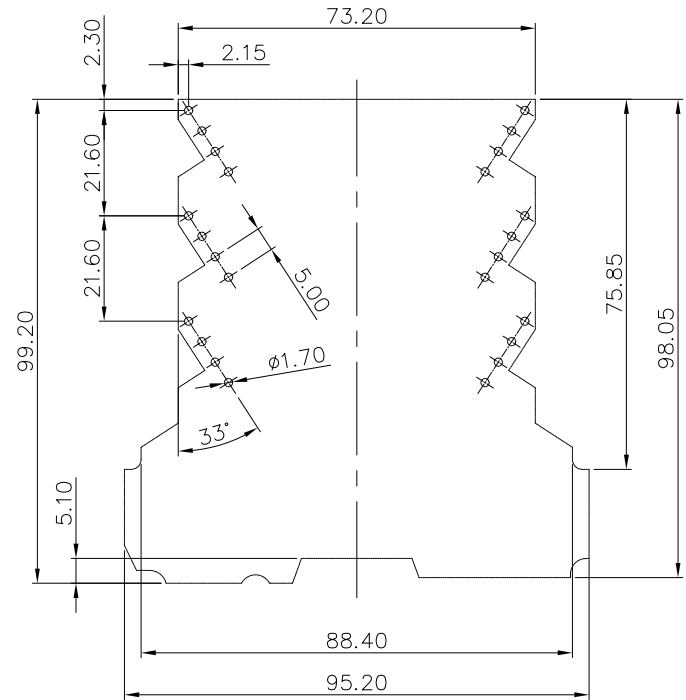
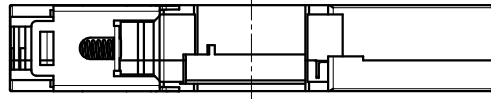
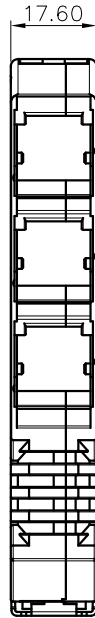
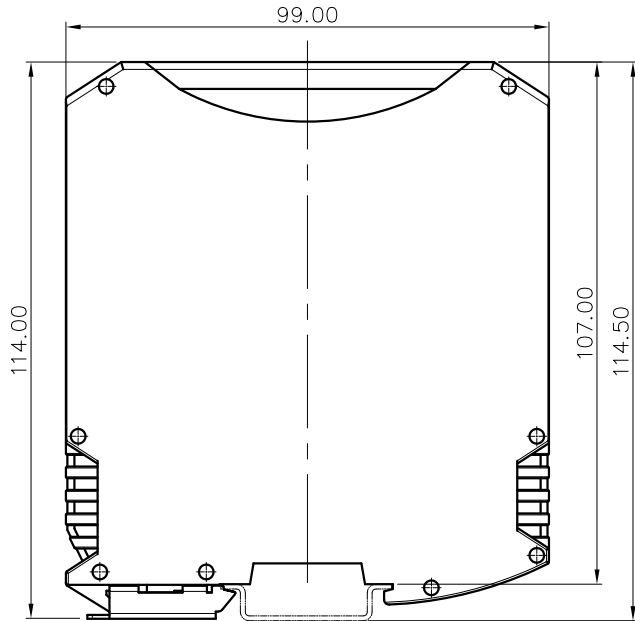
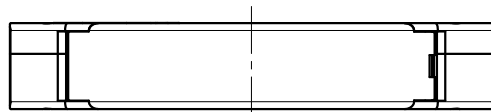


| REVISION RECORD | | | | |
|-----------------|-----|-------------|------|------|
| REV | ECN | DESCRIPTION | DRFT | DATE |



PCB LAYOUT

NOTES:

- 1.Dimension shall be interpreted per ASME Y14.5-2009
- 2.Poles : N=03P
- 3.Operating temperature: -40°C~+105°C
- 4.Undimensioned tolerances:

| Pitch range in mm | | Nominal dimension range in mm | | | | | Tolerances | |
|-------------------|---------|-------------------------------|---------|---------|---------|--------|------------|--|
| TO | Over TO | TO | Over TO | Over TO | Over TO | 0.1/10 | ± | |
| 6 | 10 | 30 | 60 | 100 | 150 | | ±2' | |
| 6 | 10 | 24 | 30 | 60 | 100 | | < | |
| ±0.15 | ±0.20 | ±0.30 | ±0.30 | ±0.50 | ±0.70 | ±1.00 | ±1.30 | |

5.RoHS Compliance

FMEH - 03P - 1Y - 00A (H)
 (Series No.)(Poles)(Single Pitch) (Color):1.(Grey) 2.(Blue)
 3.(Black) 4.(Green)
 5.(Orange) 6.(Red)
 7.(Transparent)
 8.(Yellow) 9.(White)
 (RoHS)
 00A-(Standard)

| | | | | |
|------------------------|-----------|-----------------------------------|----------------------|-----|
| DETACHED LISTS | PART NO.: | NINGBO DEGSON ELECTRICAL CO., LTD | | |
| | APPD: | NAME: FMEH-03P-1Y-00A(H) | | |
| | CHKD: | TITLE: CUSTOMER DRAWING | | |
| | DRFT: | DRAWING NO.: | | REV |
| THIRD ANGLE PROJECTION | | MM (INCH) | DO NOT SCALE DRAWING | DO |
| | | SCALE | 1:1 | |

X-ON Electronics

Largest Supplier of Electrical and Electronic Components

Click to view similar products for [Enclosures, Boxes, & Cases](#) category:

Click to view products by [Degson](#) manufacturer:

Other Similar products are found below :

[CR-425 PAINTED](#) [585-R-WH-PK](#) [M-10-PLATED](#) [60221-01](#) [60566-01-000](#) [HPL-9VB BATT DOOR](#) [M-16-LID-PLATED](#) [M18-PLTD](#) [M-21-LID-PLATED](#) [M-21-PLATED](#) [M-23-PLATED](#) [CU-281-MB](#) [6711GSKT](#) [71884-29-028](#) [LH45-100 Black](#) [7200B](#) [72868-510-000](#) [CNS-0000 Black](#) [72883-510-000](#) [CNS-0101 Black](#) [72906-510-000](#) [CNS-0407 Black](#) [73091-510-000](#) [CNM-0000-BLACK Kit](#) [73092-510-000](#) [CNM-0101 Black](#) [73108-510-000](#) [CNL-0303 Black](#) [73395-510-039](#) [CNS-0006 Bone](#) [74257-510-000](#) [CNL-0004](#) [MDC-1183-PLAIN-ALUM](#) [MDC-1183-PTD](#) [MDC-13104-PLAIN-ALUM](#) [MDC-211 - PAINTED IVORY/BEIGE](#) [MDC-321-PTD](#) [MDC-432-PLAIN-ALUM](#) [MDC-973-PTD](#) [76](#) [77153-01-028](#) [FLX6030](#) [83535-01-508](#) [PS-11296-G](#) [PS-11298-B](#) [116-508](#) [120-407](#) [120-412](#) [120-909](#) [120-455](#) [R272-100-000](#) [120-910](#) [R501-001-010](#) [R508-080-000](#) [R508-160-000](#) [R530-120-000](#) [R530-122-000](#) [R530-200-000](#) [R531-160-000](#) [R531-200-000](#) [R582-080-100](#)