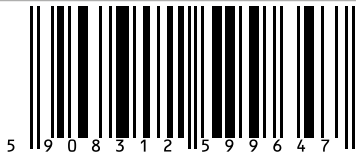




F&F Filipowski sp. j.
Konstantynowska 79/81, 95-200 Pabianice, Poland
phone/fax (+48 42) 215 23 83 / (+48 42) 227 09 71
www.fif.com.pl; e-mail: biuro@fif.com.pl

Wireless system
F&Wave

FW-WS1 Radio wall switch 1-button

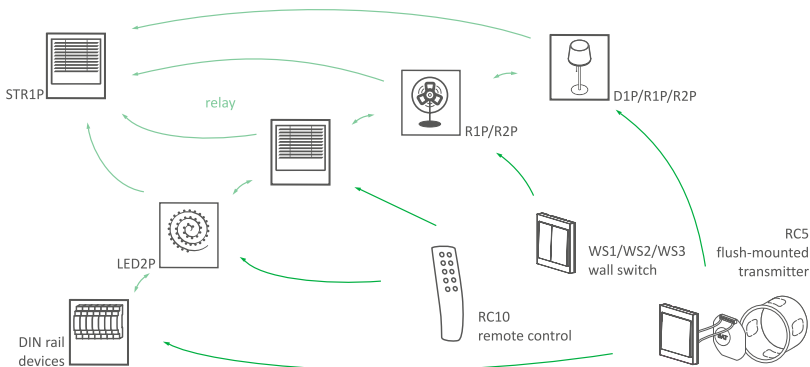


Do not dispose of this device to trash with other unsorted waste! In accordance with the Waste Electrical and Electronic Equipment Act any household electro-waste can be turned in free of charge and in any quantity to a collection point established for this purpose, as well as to the store in the event of purchasing new equipment (as per the old for new rule, regardless of brand). Electro-waste thrown in the trash or abandoned in the bosom of nature pose a threat to the environment and human health.



Description of the system

F&Wave is a family of wireless devices controlled by radio with a range of up to 100 meters*. The receivers are available in either a DIN-rail mounting version (housing 1S) or a Ø60 flush-mounted version. The transmitters are available as handheld remote controllers or as a flush-mounted version. The receivers relay control signals. The device that receives a control signal from the transmitter will automatically send it forward, which allows to increase the range of the remote control.

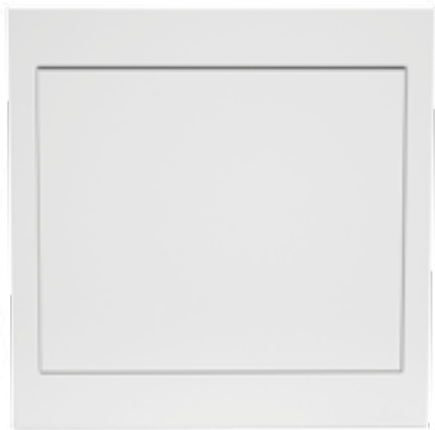


* Range of up to 100 meters in open space without any interfering factors. In building conditions and in the presence of interference sources (power lines, transmitters, etc.) the actual range may be smaller.

Characteristics

- ◆ 1-button remote control transmitter;
- ◆ works with F&Wave remote control receivers;
- ◆ ability to control any number of receivers;
- ◆ on/off (bi-stable switch) with receivers: FW-R1P, FW-R1D, FW-R2P, FW-R2D, FW-D1P, FW-D1D, FW-LED2P, FW-LED2D;
- ◆ raise/lower the roller blind with receivers FW-STR1P, FW-STR1D;
- ◆ dim/brighten the lighting with receivers FW-D1P, FW-D1D, FW-LED2P, FW-LED2D;
- ◆ installation does not require a flush-mounted box.

View of the device



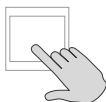
Pairing

①



After you successfully connect the receiver, press and hold the PROG button until the device switches on the output circuit and the communication LED goes off.

②



Press the button.

③

If the pairing is correct, the output circuit will be momentary switched off and the LED in the receiver will switch on again.



Exit from the programming mode of the receiver occurs automatically after 30 seconds of waiting for a signal from the transmitter or by briefly pressing the PROG button.



Each channel of the receiver can be paired with eight different transmitters (remote buttons). Pairing with more buttons will remove the first entries made in the receiver.

Unpairing

Unpairing of the wall button from the receiver is only possible by clearing the list of all transmitters in the receiver. To clear the list of transmitters cooperating with the receiver, press and hold the PROG button for a minimum of 10 seconds. Fast flashing of the communication LED indicates that the memory of the controller is cleared.

Button configuration



Due to the nature of transmission and retransmission it is not recommended to use the same button on the transmitter more often than every 2 seconds. Switching the receiver may occur with a slight delay.



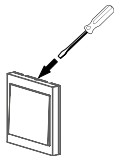
It is not recommended to use remote bi-stable transmitters to control a group of receivers due to the risk of the switching status desynchronization (especially when working with larger distances and/or simultaneous use of the local buttons on the receivers).

F&Wave system device

Transmitters	Receivers	Ø60 box	DIN rail
flush-mounted	Single relay	FW-R1P	FW-R1D
FW-RC4-AC, FW-RC5	Double relay	FW-R2P	FW-R2D
remote controls	Universal dimmer	FW-D1P	FW-D1D
FW-RC4, FW-RC10	Roller blind controller	FW-STR1P	FW-STR1D
wall buttons	Dual-channel LED controller	FW-LED2P	FW-LED2D
FW-WS1, FW-WS2, FW-WS3			

Battery change

①



Remove the frame by prying it gently with a flat tool in the cut dedicated to this purpose.

②

Fold up the buttons.

③

Remove the battery from the holder.

④

Install a new battery paying close attention to the correct polarity. The "+" sign on the battery up.

⑤

Close the buttons and then set up the frame with notch facing up.



Do not dispose of the used batteries in the trash!

User is obliged to hand over waste batteries to the collection point for recyclable materials.

Technical data

power supply	3 V DC
power consumption	
button pressed	20 mA
standby	15 nA
battery	CR2032
battery life	approx. 15 hours of broadcasting (pressed button on the switch)
working temperature	5÷50°C
radio frequency	868 MHz
dimensions	86×86×15 mm

Warranty

F&F products are covered by a 24 month warranty from the date of purchase. The warranty is effective only with a proof of purchase. Contact your dealer or directly with us. For more information on the procedure for submitting a warranty claim visit our webpage: www.fif.com.pl/reklamacje

Compliance with the standards

PN-EN 60669, PN-EN 60950, PN-EN 55024, PN-EN 61000,
PN-ETSI EN 300 220-1, PN-ETSI EN 300 220-2,
PN-ETSI EN 301 489-1, PN-ETSI EN 301 489-3.
CE declaration of conformity is available for download at: www.fif.com.pl.

X-ON Electronics

Largest Supplier of Electrical and Electronic Components

Click to view similar products for [Power Management IC Development Tools](#) category:

Click to view products by [F&F](#) manufacturer:

Other Similar products are found below :

[EVAL6482H-DISC](#) [EVAL-AD5522EBUZ](#) [EVAL-ADM1060EBZ](#) [EVAL-ADM1073MEBZ](#) [EVAL-ADM1166TQEBZ](#) [EVAL-ADM1168LQEBZ](#) [EVAL-ADM1171EBZ](#) [EVAL-ADM1276EBZ](#) [EVB-EN5319QI](#) [EVB-EN5365QI](#) [EVB-EN6347QI](#) [EVB-EP5348UI](#) [MIC23158YML EV](#) [MIC23451-AAAYFL EV](#) [MIC5281YMME EV](#) [ADM00513](#) [ADM8611-EVALZ](#) [ADM8612-EVALZ](#) [ADM8613-EVALZ](#) [ADM8615-EVALZ](#) [ADP1046ADC1-EVALZ](#) [ADP1055-EVALZ](#) [ADP122-3.3-EVALZ](#) [ADP130-0.8-EVALZ](#) [ADP130-1.2-EVALZ](#) [ADP130-1.5-EVALZ](#) [ADP130-1.8-EVALZ](#) [ADP160UJZ-REDYKIT](#) [ADP166UJ-EVALZ](#) [ADP1712-3.3-EVALZ](#) [ADP1714-3.3-EVALZ](#) [ADP1715-3.3-EVALZ](#) [ADP1716-2.5-EVALZ](#) [ADP1740-1.5-EVALZ](#) [ADP1752-1.5-EVALZ](#) [ADP1754-1.5-EVALZ](#) [ADP1828LC-EVALZ](#) [ADP1870-0.3-EVALZ](#) [ADP1871-0.6-EVALZ](#) [ADP1873-0.6-EVALZ](#) [ADP1874-0.3-EVALZ](#) [ADP1876-EVALZ](#) [ADP1879-1.0-EVALZ](#) [ADP1882-1.0-EVALZ](#) [ADP1883-0.6-EVALZ](#) [ADP197CB-EVALZ](#) [ADP199CB-EVALZ](#) [ADP2102-1.25-EVALZ](#) [ADP2102-1.2-EVALZ](#) [ADP2102-1.875EVALZ](#)