

## Clevis joint: GERM and GELM



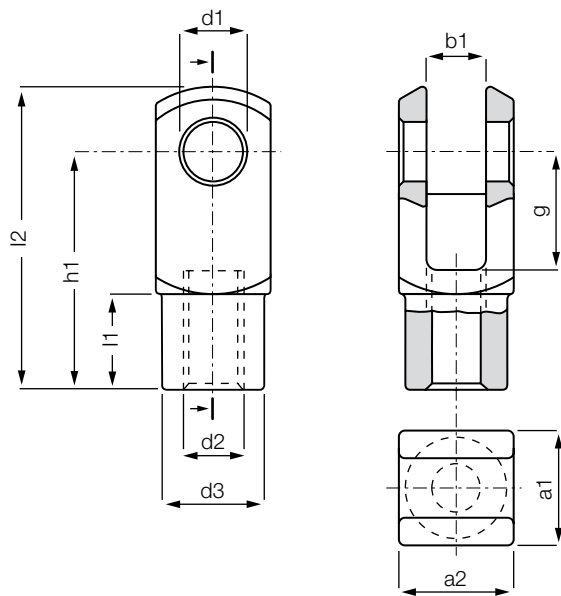
- Light weight
- High strength under impact loads
- Corrosion resistance
- High tensile strength
- Can be used in combination with series E rod ends
- Vibration-dampening
- Noise-dampening
- Available in left- (GELM) and right-hand-thread (GERM)

## Technical data

Part No.		Max. static tensile strength		Max. static radial load		Max. torque strength	Weight
		Short term	Long term	Short term	Long term		
Right-hand thread	Left-hand thread	[N]	[N]	[N]	[N]	[Nm]	[g]
<b>GERM-04 M3.5</b>	<b>GELM-04 M3.5</b>	650	325	250	125	0.4	0.9
<b>GERM-04</b>	<b>GELM-04</b>	650	325	250	125	0.4	0.9
<b>GERM-05 DIN M4</b>	<b>GELM-05 DIN M4</b>	1,000	500	250	125	0.4	1.5
<b>GERM-05 DIN M5</b>	<b>GELM-05 DIN M5</b>	1,000	500	250	125	0.5	1.5
<b>GERM-05</b>	<b>GELM-05</b>	1,200	600	250	125	0.5	2.7
<b>GERM-05 DIN M5 LS<sup>22)</sup></b>	<b>GELM-05 DIN M5 LS<sup>22)</sup></b>	1,000	500	130	65	0.5	2.3
<b>GERM-06</b>	<b>GELM-06</b>	1,400	700	300	150	1.5	2.5
<b>GERM-06 LS<sup>22)</sup></b>	<b>GELM-06 LS<sup>22)</sup></b>	1,400	700	130	65	1.5	3.6
<b>GERM-08</b>	<b>GELM-08</b>	2,700	1,350	650	325	5	6.3
<b>GERM-10</b>	<b>GELM-10</b>	4,700	2,350	800	400	15	13.2
<b>GERM-10 F</b>	<b>GELM-10 F</b>	4,700	2,350	800	400	6	13.2
<b>GERM-12</b>	<b>GELM-12</b>	5,700	2,850	900	450	20	20.2
<b>GERM-12 F</b>	<b>GELM-12 F</b>	5,700	2,850	900	450	15	20.2
<b>GERM-14</b>	<b>GELM-14</b>	6,600	3,300	1,000	500	25	29.9
<b>GERM-14 F</b>	<b>GELM-14 F</b>	6,600	3,300	1,000	500	20	29.9
<b>GERM-15</b>	<b>GELM-15</b>	3,200	1,600	1,000	500	25	30
<b>GERM-16</b>	<b>GELM-16</b>	7,500	3,750	1,200	600	30	49.9
<b>GERM-16 F</b>	<b>GELM-16 F</b>	7,500	3,750	1,200	600	27.5	49.9
<b>GERM-17</b>	<b>GELM-17</b>	3,600	1,800	1,200	600	30	50
<b>GERM-17 F</b>	<b>GELM-17 F</b>	3,600	1,800	1,200	600	27.5	50
<b>GERM-20</b>	<b>GELM-20</b>	9,500	4,750	3,000	1,500	60	105
<b>GERM-20 M20</b>	<b>GELM-20 M20</b>	9,500	4,750	3,000	1,500	80	105

<sup>22)</sup> LS = longer shank

## Clevis joint: GERM and GELM



### Order key

Type	Size	Options
------	------	---------

**G E ... M - 04**

Clevis joint	Dimensional series E	Thread	Metric	Inner-Ø [mm]
--------------	----------------------	--------	--------	--------------

#### Thread

L = left-hand thread

R = right-hand thread



#### Material:

igumid G ► Page 1235

## Dimensions [mm]

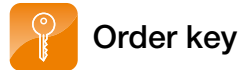
Part No.	d1	g	a1	a2	b1	d2	d3	l2	h1	l1
	+0.1	h11	+0.3	+0.3	B13	Thread tolerance 6H	+0.3	+0.5	+0.3	+0.2
Right-hand thread			-0.16	-0.16			-0.3	-0.5	-0.3	-0.2
GERM-04 M3.5						M3.5	8.0	21.0	16.0	6.0
GELM-04 M3.5						M3.5	8.0	21.0	16.0	6.0
GERM-04						M04	8.0	21.0	16.0	6.0
GELM-04						M04	8.0	21.0	16.0	6.0
GERM-05 DIN M4						M04	9.0	24.5	20.0	7.5
GELM-05 DIN M4						M04	9.0	24.5	20.0	7.5
GERM-05 DIN M5						M05	9.0	24.5	20.0	7.5
GELM-05 DIN M5						M05	9.0	24.5	20.0	7.5
GERM-05						M05	10.0	31.0	24.0	9.0
GELM-05						M05	10.0	31.0	24.0	9.0
GERM-05 DIN M5 LS <sup>22)</sup>						M05	9.0	36.0	30.0	7.5
GELM-05 DIN M5 LS <sup>22)</sup>						M05	9.0	36.0	30.0	7.5
GERM-06						M06	10.0	31.0	24.0	9.0
GELM-06						M06	10.0	31.0	24.0	9.0
GERM-06 LS <sup>22)</sup>						M06	10.0	43.0	36.0	9.0
GELM-06 LS <sup>22)</sup>						M06	10.0	43.0	36.0	9.0
GERM-08						M08	14.0	42.0	32.0	12.0
GELM-08						M08	14.0	42.0	32.0	12.0
GERM-10						M10	18.0	52.0	40.0	15.0
GELM-10						M10	18.0	52.0	40.0	15.0
GERM-10 F						M10 x 1.25	18.0	51.3	40.0	15.0
GELM-10 F						M10 x 1.25	18.0	51.3	40.0	15.0
GERM-12						M12	20.0	61.3	48.0	18.0
GELM-12						M12	20.0	61.3	48.0	18.0
GERM-12 F						M12 x 1.25	20.0	61.3	48.0	18.0
GELM-12 F						M12 x 1.25	20.0	61.3	48.0	18.0
GERM-14						M14	24.0	71.3	56.0	22.5
GELM-14						M14	24.0	71.3	56.0	22.5
GERM-14 F						M14 x 1.5	24.0	71.3	56.0	22.5
GELM-14 F						M14 x 1.5	24.0	71.3	56.0	22.5
GERM-15						M14	24.0	71.3	56.0	22.5
GELM-15						M14	24.0	71.3	56.0	22.5
GERM-16						M16	26.0	81.9	64.0	24.0
GELM-16						M16	26.0	81.9	64.0	24.0
GERM-16 F						M16 x 1.5	26.0	81.9	64.0	24.0
GELM-16 F						M16 x 1.5	26.0	81.9	64.0	24.0
GERM-17						M16	26.0	83.0	64.0	24.0
GELM-17						M16	26.0	83.0	64.0	24.0
GERM-17 F						M16 x 1.5	26.0	83.0	64.0	24.0
GELM-17 F						M16 x 1.5	26.0	83.0	64.0	24.0
GERM-20						M20 x 1.5	34.0	105.0	80.0	30.0
GELM-20						M20 x 1.5	34.0	105.0	80.0	30.0
GERM-20 M20						M20 x 2.5	34.0	105.0	80.0	30.0
GELM-20 M20						M20 x 2.5	34.0	105.0	80.0	30.0

<sup>22)</sup> LS = longer shank

Clevis joints with clevis pin and circlip:  
GERMK and GELMK



- Light weight
- Corrosion resistance
- High tensile strength
- Can be used in combination with series E rod ends



Type      Size      Options

**G E ... M K - 04**

Clevis joint	Dimensional series E	Thread	Metric	Clevis pin and circlip	Inner-Ø [mm]
--------------	----------------------	--------	--------	------------------------	--------------

Thread  
L = left-hand thread  
R = right-hand thread



**Material:**  
igumid G ▶ Page 1235

## Technical data

Part No.		Max. static tensile strength		Max. static radial load		Weight [g]
		Short term	Long term	Short term	Long term	
	Right-hand thread      Left-hand thread	[N]	[N]	[N]	[N]	[g]
GERMK-04 M3.5	GELMK-04 M3.5	500	250	250	125	1.3
GERMK-04	GELMK-04	500	250	250	125	1.3
GERMK-05 DIN M4	GELMK-05 DIN M4	800	400	250	125	2.1
GERMK-05 DIN M5	GELMK-05 DIN M5	800	400	250	125	2.1
GERMK-05	GELMK-05	900	450	250	125	3.3
GERMK-05 DIN M5 LS <sup>22)</sup>	GELMK-05 DIN M5 LS <sup>22)</sup>	800	400	130	65	2.9
GERMK-06	GELMK-06	1,300	650	300	150	3.3
GERMK-06 LS <sup>22)</sup>	GELMK-06 LS <sup>22)</sup>	1,300	650	130	65	4.4
GERMK-08	GELMK-08	2,100	1,050	650	325	7.9
GERMK-10	GELMK-10	3,000	1,500	800	400	16.4
GERMK-10 F	GELMK-10 F	3,000	1,500	800	400	16.4
GERMK-12	GELMK-12	3,500	1,750	900	450	25.3
GERMK-12 F	GELMK-12 F	3,500	1,750	900	450	25.3
GERMK-14	GELMK-14	6,100	3,050	1,000	500	31.2
GERMK-15	GELMK-15	2,800	1,400	1,000	500	38.9
GERMK-16	GELMK-16	7,000	3,500	1,200	600	60.8
GERMK-16 F	GELMK-16 F	7,000	3,500	1,200	600	60.8
GERMK-17	GELMK-17	3,600	1,800	1,200	600	62.3
GERMK-17 F	GELMK-17 F	3,600	1,800	1,200	600	62.3
GERMK-20	GELMK-20	9,000	4,500	3,000	1,500	125.2
GERMK-20 M20	GELMK-20 M20	9,000	4,500	3,000	1,500	125.2

<sup>22)</sup> LS = longer shank



Single components: clevis pin  
GBM and circlip GSR  
▶ Page 641

## X-ON Electronics

Largest Supplier of Electrical and Electronic Components

*Click to view similar products for [Mounting Fixings](#) category:*

*Click to view products by [Igus](#) manufacturer:*

Other Similar products are found below :

[5912235-2](#) [007310](#) [007541](#) [6-141-P](#) [620HA038NF09](#) [620HA038NF11](#) [CTJ420E028-513](#) [M81714/60-12-01](#) [M81714/60-22-01](#) [L/C](#)  
[MA1EAF1200](#) [70-584649-01P](#) [71-074914-006](#) [71-215091-8S](#) [712HA170B23128-N](#) [71-344699-4S](#) [71-441549-19S](#) [71-441864-5S](#) [71-](#)  
[490451-4H](#) [EX-13-3-B-16-325PN](#) [75-69116-8S](#) [75-69211-3P](#) [75-69220-27S](#) [75-69224-5S](#) [75-69614-2S](#) [770-006A109](#) [770-006A109R](#) [770-](#)  
[006A207](#) [770-006A208W1](#) [770-006A209](#) [770-006A306](#) [770-006A703W1](#) [770-006A704](#) [770-006A704W1](#) [770-006A705](#) [770-006A706](#)  
[770-006A706W1](#) [770-006A707](#) [770-006A709](#) [770-007A203](#) [770-007A203W1](#) [770-007A204W1](#) [770-007A207W1](#) [770-007A703](#) [770-](#)  
[007A704W1](#) [770-007A706](#) [770-007A707W1](#) [770-010Y208](#) [770-010Y308](#) [770-010Y705](#) [770-010Y706](#)