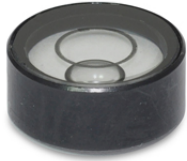


GN 2281

Bull's eye levels

for installation in plates and housings



Specification

Sensitivity

- Type **10**: Angle minutes, bubble move by 2mm (only Version ALS)
- Type **40**: Angle minutes, bubble move by 2mm (only Version KT)

Identification no.

- No. **1**: without contrast ring
- No. **2**: with contrast ring (only version KT for d=12...18)

Housing

Aluminium, anodized, natural colour **ALS** /

Viewing window, glass

Plastic, white **KT** /

Viewing window, transparent

Filling

- colourless-transparent **K**
- green-transparent **G** (only Version KT)

Information

Due to their cylindrical design, bull's eye levels GN 2281 are suitable for installation in plates and housings where they serve to check the horizontal position of jigs, machines and devices.

Bull's eye levels are not aligned, i.e. there is no reference to the external outline of the level. The vertical position must be ensured by aligning the holding building element.

The black housing of the version ALS creates a reflection at the edge of the bubble which significantly improves the readability. Version KT is available with contrast ring inside the air level housing (Identification no. 2) which creates the same effect.

Alternatively, the contrast can also be improved by a dark surface inside the mounting bore hole.

On request

- Other sensitivities

Technical Information

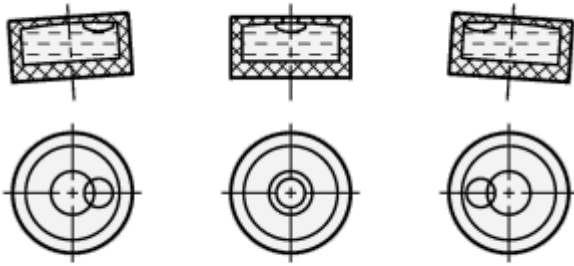
Definition of terms

A spirit level is hollow body filled with a fluid and a gas bubble which is used to check the horizontal position of an object. The position of the gas bubble in the fluid shows the angle and the direction at which the object is inclined in relation to the horizontal level.

The function

The hollow body containing the fluid and the gas bubble has a defined radius at its top side, causing the gas bubble to float by its buoyancy always to the highest point.

The transparent upper section normally carries markings or a circle centric to the bubble position. If the gas bubble is centered precisely inside the marking and if the air level is properly adjusted, the object to be checked is in the horizontal position.



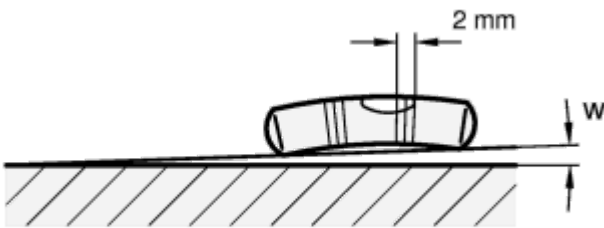
Types of spirit levels

Spirit levels are available as bull's eye levels or screw-on levels.

Bull's eye levels simultaneously measure the angle of inclination and the angular position, e.g. of a certain level, whereas screw-on levels indicate the angle of inclination in one dimension only along the axis of the level.

Sensitivity

The sensitivity of spirit levels is given as angle of inclination, e.g. 30 angular minutes or 0.5 degrees. This is the angle of inclination by which the spirit level must be tilted to make the bubble move by 2 mm. A spirit level with a sensitivity of 6 angular minutes therefore has a higher sensitivity than a spirit level with a sensitivity of 30 angular minutes.

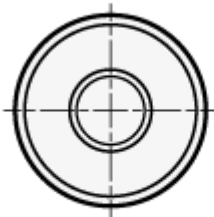
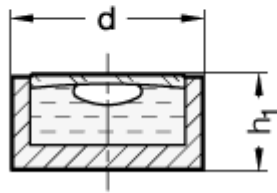


Angle of inclination and difference in altitude

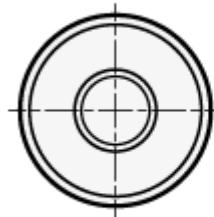
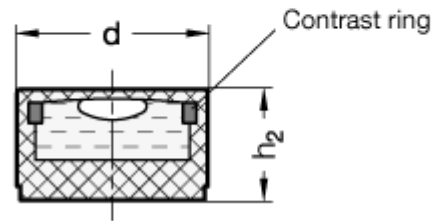
Sensitivity is sometimes also given in millimetre per metre, i.e. as difference in altitude per unit of the length. See also the reference table opposite.

Difference in altitude in millimetre per metre	Angle w	
	in angular minutes	Degree, decimal
0.3	1	0.0167
0.9	3	0.0500
1.7	6	0.1000
2.9	10	0.1667
5.8	20	0.3333
8.7	30	0.5000
11.6	40	0.6667
14.5	50	0.8333
17.5	60	1.0000

Version **ALS**



Version **KT**



Description	d	h ₁	h ₂	Weight
GN 2281-ALS-10-K-10-1	10	6.9	-	1
GN 2281-ALS-12-K-10-1	12	6.4	-	2
GN 2281-ALS-14-K-10-1	14	6.2	-	2
GN 2281-ALS-15-K-10-1	15	7.4	-	3
GN 2281-ALS-18-K-10-1	18	7.3	-	4
GN 2281-KT-10-G-40-1	10	-	6	1
GN 2281-KT-10-K-40-1	10	-	6	1
GN 2281-KT-12-G-40-1	12	-	7	1
GN 2281-KT-12-G-40-2	12	-	7	1
GN 2281-KT-12-K-40-1	12	-	7	1
GN 2281-KT-12-K-40-2	12	-	7	1
GN 2281-KT-14-G-40-1	14	-	8	1
GN 2281-KT-14-G-40-2	14	-	8	1
GN 2281-KT-14-K-40-1	14	-	8	1
GN 2281-KT-14-K-40-2	14	-	8	1
GN 2281-KT-15-G-40-1	15	-	8	1
GN 2281-KT-15-G-40-2	15	-	8	1
GN 2281-KT-15-K-40-1	15	-	8	1
GN 2281-KT-15-K-40-2	15	-	8	1
GN 2281-KT-18-G-40-1	18	-	9	2
GN 2281-KT-18-G-40-2	18	-	9	2
GN 2281-KT-18-K-40-1	18	-	9	2
GN 2281-KT-18-K-40-2	18	-	9	2

X-ON Electronics

Largest Supplier of Electrical and Electronic Components

Click to view similar products for [Mounting Fixings](#) category:

Click to view products by [Elesa & Ganter](#) manufacturer:

Other Similar products are found below :

[5912235-2](#) [007310](#) [007541](#) [6-141-P](#) [620HA038NF09](#) [620HA038NF11](#) [CTJ420E028-513](#) [M81714/60-12-01](#) [M81714/60-22-01](#) [L/C](#)
[MA1EAF1200](#) [70-584649-01P](#) [71-074914-006](#) [71-215091-8S](#) [712HA170B23128-N](#) [71-344699-4S](#) [71-441549-19S](#) [71-441864-5S](#) [71-](#)
[490451-4H](#) [EX-13-3-B-16-325PN](#) [75-69116-8S](#) [75-69211-3P](#) [75-69220-27S](#) [75-69224-5S](#) [75-69614-2S](#) [770-006A109](#) [770-006A109R](#) [770-](#)
[006A207](#) [770-006A208W1](#) [770-006A209](#) [770-006A306](#) [770-006A703W1](#) [770-006A704](#) [770-006A704W1](#) [770-006A705](#) [770-006A706](#)
[770-006A706W1](#) [770-006A707](#) [770-006A709](#) [770-007A203](#) [770-007A203W1](#) [770-007A204W1](#) [770-007A207W1](#) [770-007A703](#) [770-](#)
[007A704W1](#) [770-007A706](#) [770-007A707W1](#) [770-010Y208](#) [770-010Y308](#) [770-010Y705](#) [770-010Y706](#)