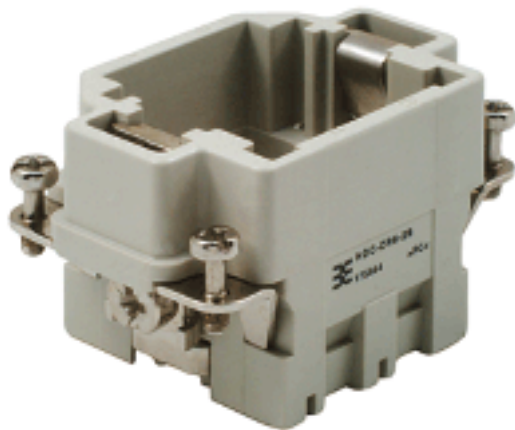


**HDC insert
HDC-CR6-2S GR**

Weidmüller Interface GmbH & Co. KG
Klingenbergstraße 16
D-32758 Detmold
Germany
Fon: +49 5231 14-0
Fax: +49 5231 14-292083
www.weidmueller.com



The sturdy CR6 module frames are available in polycarbonate or die-cast zinc. The frames are designed so that two individual modules or a double module can be installed. The CR6 frames are designed to fit the size-3 housings.

General ordering data

Type	HDC-CR6-2S GR
Order No.	1758440000
Version	Heavy Duty Connectors, HDC insert, ConCept frame
GTIN (EAN)	4032248019663
Qty.	5 pc(s).

HDC insert HDC-CR6-2S GR

Weidmüller Interface GmbH & Co. KG
 Klingenbergstraße 16
 D-32758 Detmold
 Germany
 Fon: +49 5231 14-0
 Fax: +49 5231 14-292083
 www.weidmueller.com

Technische Daten

Dimensions and weights

Length	51 mm	Width	34 mm
Height	35 mm	Net weight	32.94 g

Dimensions

Height of plug	35 mm	Total length base	51 mm
----------------	-------	-------------------	-------

General data

Size	3	Series	ConCept frame
UL 94 flammability rating	V-0	No. of poles	1
Type	Male		

Connection data PE

Wire connection cross section AWG, max.	AWG 14	Connection type PE	Screw connection
Tightening torque, min. PE connection	1.2 Nm	Tightening torque, max. PE connection	1.5 Nm

Version

Wire connection cross section AWG, max.	AWG 14	Size	3
Material	Polycarbonate		

Classifications

ETIM 3.0	EC001121	UNSPSC	30-21-18-01
eClass 5.1	27-14-34-19	eClass 6.2	27-14-34-19
eClass 7.1	27-44-05-15		

Product information

Descriptive text ordering data	For 2 modules
Descriptive text accessories	Accessories, see chapter J - Tools, see chapter K

Approvals

Approvals



ROHS	Conform
------	---------

X-ON Electronics

Largest Supplier of Electrical and Electronic Components

Click to view similar products for [Pluggable Terminal Blocks](#) category:

Click to view products by [Weidmuller](#) manufacturer:

Other Similar products are found below :

[57.404.7553](#) [57.504.0053.7](#) [57.510.0053](#) [57.910.6153](#) [01.112.1453](#) [CTB932VE/6](#) [MC 1.5/ 6-ST-3.5 GY AU](#) [ET02015000J0G](#) [734-104](#) [734-304](#) [8-141-P](#) [860505](#) [860516](#) [860810](#) [861908](#) [8726](#) [GBPACX-12](#) [93.731.4953.0](#) [PV05-5,08-K](#) [PVP02-5,00](#) [PVP04-3,50](#) [PVS02-5,00](#) [1-1986160-3](#) [H-10](#) [EC350V-05P](#) [ECH350V-06P](#) [EK381V4L-04P](#) [ELFH09150](#) [ELFH16150](#) [ELFP03110](#) [ELFP10210](#) [ELFT06250](#) [ELFT07250](#) [ELVF09400](#) [ELVP03100](#) [ELXH071G0E](#) [ELXP041G0](#) [ELXT046G0](#) [1700101](#) [1700410](#) [1700425](#) [1703176](#) [1703243](#) [1703634](#) [1705229](#) [1710175](#) [1714537](#) [1719600](#) [1729386](#) [1734692](#)