

## HDC enclosures HDC 16B SDLU 2M25G

**Weidmüller Interface GmbH & Co. KG**  
Klingenbergstraße 16  
D-32758 Detmold  
Germany  
Fon: +49 5231 14-0  
Fax: +49 5231 14-2083  
www.weidmueller.com



The special die-cast alloy and the multi-layered surface sealing provide complete protection for the HDC housings.

The cleverly designed interlock system is manufactured from stainless steel. That guarantees a long lifespan with high resistance to corrosion and impact.

The housing interlock system provides integrated safety. Our unique, patented spring system provides the housing interlock with a secure grip and prevents accidental opening. This makes the interlock resistance to vibration and impact.

The laser marking allows for easy and quick identification. Each housing is permanently labelled with a laser marking so that each product can be quickly designated and positioned.

### General ordering data

Order No.	<a href="#">1788270000</a>
Type	HDC 16B SDLU 2M25G
Version	HDC enclosures, Size: 6, Protection degree: IP 65, Base enclosure, End-locking clamp, lower side, Standard, with cover, No. of cable entry glands: M 25
GTIN (EAN)	4032248205806
Qty.	1 pc(s).

## HDC enclosures HDC 16B SDLU 2M25G

**Weidmüller Interface GmbH & Co. KG**  
Klingenbergstraße 16  
D-32758 Detmold  
Germany  
Fon: +49 5231 14-0  
Fax: +49 5231 14-2083  
www.weidmueller.com

## Technical data

### Dimensions

Length	117 mm	Width	99.5 mm
Height	82 mm	Mounting dimension - width	105 mm
Mounting dimension - height	45 mm	Net weight	440 g

### Dimensions

Total length housing	93.3 mm	Width housing C	43 mm
Width base C1	56.5 mm	Height of housing B	82 mm
Height of base B1	5 mm	Hole pitch length A2	105 mm
Cable entry	w. threading		

### General data

Protection class note	Protection class with secured cover: IP 65	Housing main material	diecast aluminium
-----------------------	--	-----------------------	-------------------

### Version

Design of housing	Base enclosure	Size	6
Design	Standard	Top part/bottom part/lid	lower part
Design of locking system	End-locking clamp, lower side	Cable entry	w. threading
No. of cable entry glands	M 25	Number of cable entry on top	0
Number of cable entry sideways	2	Cover	with cover
Design of cover	with cover		

### Classifications

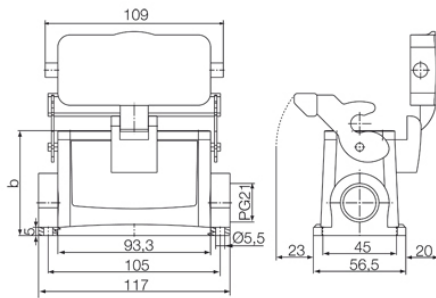
ETIM 2.0	EC000437	ETIM 3.0	EC000437
UNSPSC	30-21-18-01	eClass 4.1	27-14-08-05
eClass 5.1	27-14-34-19	eClass 6.0	27-26-12-03
eClass 7.0	27-44-02-02		

### Downloads

PDF	<a href="#">1788270000_HDC_16B_SDLU_2M25G_STP_Blatt_1.pdf</a>
IGES	<a href="#">1788270000_HDC_16B_SDLU_2M25G_STP.igs</a>
VRML	<a href="#">1788270000_HDC_16B_SDLU_2M25G_STP.wrl</a>
EPLAN	<a href="#">EPLAN/1788270000.MZF</a>
<a href="#">3-D model</a>	

**HDC enclosures  
HDC 16B SDLU 2M25G**

**Weidmüller Interface GmbH & Co. KG**  
Klingenbergstraße 16  
D-32758 Detmold  
Germany  
Fon: +49 5231 14-0  
Fax: +49 5231 14-2083  
[www.weidmueller.com](http://www.weidmueller.com)

**Drawings**

## X-ON Electronics

Largest Supplier of Electrical and Electronic Components

*Click to view similar products for [Pluggable Terminal Blocks](#) category:*

*Click to view products by [Weidmuller](#) manufacturer:*

Other Similar products are found below :

[57.404.7553](#) [57.504.0053.7](#) [57.510.0053](#) [57.910.6153](#) [01.112.1453](#) [CTB932VE/6](#) [MC 1.5/ 6-ST-3.5 GY AU](#) [ET02015000J0G](#) [734-104](#) [734-304](#) [8-141-P](#) [860505](#) [860516](#) [860810](#) [861908](#) [8726](#) [GBPACX-12](#) [93.731.4953.0](#) [PV05-5,08-K](#) [PVP02-5,00](#) [PVP04-3,50](#) [PVS02-5,00](#) [1-1986160-3](#) [H-10](#) [EC350V-05P](#) [ECH350V-06P](#) [EK381V4L-04P](#) [ELFH09150](#) [ELFH16150](#) [ELFP03110](#) [ELFP10210](#) [ELFT06250](#) [ELFT07250](#) [ELVF09400](#) [ELVP03100](#) [ELXH071G0E](#) [ELXP041G0](#) [ELXT046G0](#) [1700101](#) [1700410](#) [1700425](#) [1703176](#) [1703243](#) [1703634](#) [1705229](#) [1710175](#) [1714537](#) [1719600](#) [1729386](#) [1734692](#)