

in built-in condition

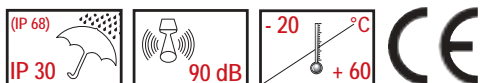
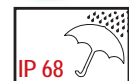


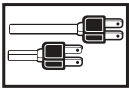
Features

- ▶ panel mount buzzers with wide voltage range
- ▶ ~ 90 dB sound pressure for universal applications
- ▶ tone types:
continuous (ESD)
pulsing (ESP)
continuous/pulsing (ESZ)
- ▶ models with spades or terminal
- ▶ sealed electronics
- ▶ for mounting in M28 bore holes
- ▶ low nominal current



ESP 24 V:
reverse gear warner for vehicles
TÜV and ADR approved
(Rn 225016) –

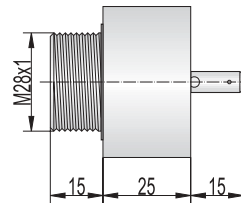




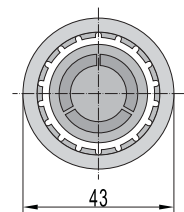
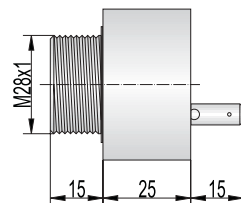
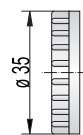
Technical data

Type	ESD	ESP	ESZ
Housing, Colour	ABS, grey or black		
Mounting	M28 - for bore holes 28 mm		
Tone type	cont. tone	pulsing tone	cont. & pulsing tone
Tone frequency	2.400 Hz		
Sound pressure (adjustable)	90 dB		
Duty cycle factor	100 %		
Protection class	IP 30		
Terminal	spades		spades (S) or terminal (K)
Temperature range	-20 °C to +60 °C		
Weight	55 g		

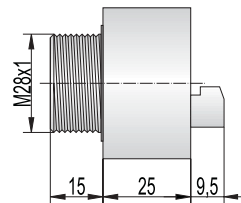
ESD-ESP



ESZ-S



ESZ-K



Order data

Type	Nominal voltage (V)	Order No.		Voltage range (V)	Nominal current (mA)
		Housing grau	Housing black		
ESD	24 V AC/DC	810 000 405	810 100 405	4 - 40	20
	48 V AC/DC	810 000 408	810 100 408	10 - 48	
	230/240 V AC	810 000 313	810 100 313	30 - 250	
ESP	24 V AC/DC	811 000 405	811 100 405	4 - 40	20
	48 V AC/DC	811 000 408	811 100 408	10 - 48	
	230/240 V AC	811 000 313	811 100 313	30 - 250	
ESZ-S	24 V AC/DC	809 000 405	809 100 405	6 - 28	20
	48 V AC/DC	809 000 408	809 100 408	10 - 48	
	110/120 V AC	809 000 310	809 100 310	20 - 140	
	230/240 V AC	809 000 313	809 100 313	50 - 250	
ESZ-K	24 V AC/DC	809 010 405	809 110 405	6 - 28	20
	48 V AC/DC	809 010 408	809 110 408	10 - 48	
	110/120 V AC	809 010 310	809 110 310	20 - 140	
	230/240 V AC	809 010 313	809 110 313	50 - 250	

X-ON Electronics

Largest Supplier of Electrical and Electronic Components

Click to view similar products for [Audio Indicators & Alerts](#) category:

Click to view products by [J Auer](#) manufacturer:

Other Similar products are found below :

[M2BJ-BH24E](#) [6-4](#) [68S1240-PA](#) [MBA-624](#) [F/BC 40P-DR LF](#) [FDG111PLF](#) [F/NRMB 24 BLACK LF](#) [PF-35N29WQ](#) [PFD-27A35PQ](#) [PL-27A35PSQ](#) [PS-531Q](#) [AB2020B-2-LW1](#) [EBPT-401](#) [PB06SD12AP](#) [PB-1220PEQ](#) [S6109](#) [SC2036ACP](#) [SC616N-2](#) [SC628FW](#) [SC628MPG](#) [SC648D](#) [SCS045MD9DT3S](#) [AB2025B-LW50-R](#) [ESZ-25B-5-250B](#) [F/BC 35-DR LF](#) [FCM12PLF](#) [F/EB20P-DR LF](#) [F/HU110MP24V-IP67B](#) [LF](#) [AI-2835-TF-LW150-2-R](#) [AI-4228-TF-LW305-R](#) [FSMD8585JSLF](#) [FSS-26T](#) [F/SU 21-02 LF](#) [F/TCW 05 WITH LABEL LF](#) [F/UCW 03 WITH LABEL LF](#) [F/UCW 06 WITH LABEL LF](#) [PKM22EPPH40S1-B0](#) [PKM35-4A0](#) [PL-35N29WQ](#) [PLD-27A35PQ](#) [PS-552Q](#) [CM-5](#) [M2BJ-BH24E-D](#) [REF-202](#) [LSC628ANR](#) [5-100](#) [PAL-328](#) [03-810.001](#) [RTO-1R07-001](#) [PL-21N31PQ](#) [PF-27A25PSQ](#)