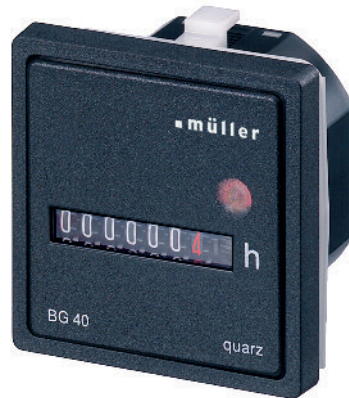




BW 40.18
Front panel 48 x 48 mm



BG 40.27
Front panel with trim 55 x 55 mm

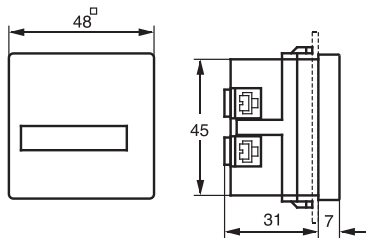


BG 40.37
Front panel with trim 72 x 72 mm

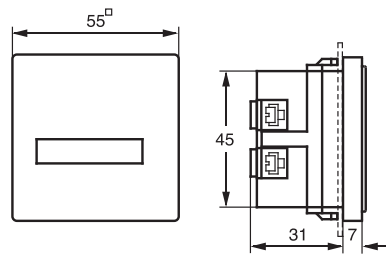
BW 40.18
BG 40.17

BW 40.28
BG 40.27

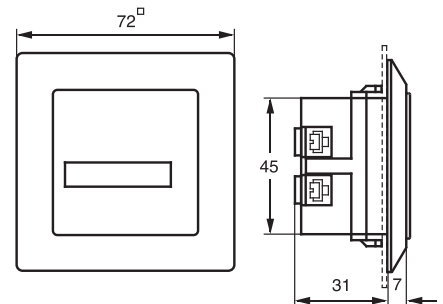
BW 40.38
BG 40.37



Order number	Version
▼ BW 40.18	Alternating current
▼ BG 40.17	Direct current
▼ Housing colour	



Order number	Version
▼ BW 40.28	Alternating current
▼ BG 40.27	Direct current
▼ Housing colour	



Order number	Version
▼ BW 40.38	Alternating current
▼ BG 40.37	Direct current
▼ Housing colour	

Highlights

- With retaining clip
- With universal connections
- Touch proof connections to VBG4
- Low-noise
- BW: Alternating current
BG: Direct current quartz crystal

Elapsed time counters BW/BG 40
for panel mounting, Alternating/Direct Current

Special features

- Large format numerals 4.4 mm in height
- Quick-fix retaining clip
- Easy to connect – screw terminals accessible from rear
- Attachments for other cutouts
- Ring seal for IP 54 – also seals front panel cutout
- BG: quartz stabilized
- BG: large voltage ranges

Technical data	BW 40 Alternating current	BG 40 Direct current
Supply voltages (please state when ordering)	230 V, 50 Hz (standard) 115 V, 50 Hz 24 V, 50 Hz	12– 48 VDC (standard) 5– 24 VDC 36–120 VDC
Other voltages	on request	on request
Optional frequency	60 Hz	–
Voltage tolerance	±15%	±10%
Power consumption (real power)	0.15 W	approx. 20 mW at 12 VDC
Counter capacity	99999 h.	999999 h.
Accuracy of reading	0,01 h.	BG: 0,1 h.
Numeral height	4.4 mm	4.4 mm
Numeral colour	white, decimal figures red	white, decimal figures red
Operation indicator	fast-running wheel	
Permitted ambient temperature	–15°...+55°C	–10°...+50°C
Enclosure	self-extinguishing thermoplastic	
Switchboard flush mounting	housing to DIN EN 43700	
Type of connection	Universal: Screw, soldered and 6.3 x 0.8 mm AMP plug-type connections	
Type of protection	Front IP 50 to DIN EN 60529 (with ring seal 101.003.004: IP 54)	
Class of protection	II	III (up to 48 VDC) when fitted in accordance with regulations

Accessories

Retaining bracket for fixing to wall or distribution board		692.006
Terminal cover for retaining bracket	003.007	
Trim 55 x 55 mm	190.003	
Mask 72 x 72 mm	190.004	
Mask Ø 72 (for flush mounting-Ø 60)	190.008	
Mask Ø 72 (for flush mounting-Ø 50,5)	190.009	
Ring seal for IP 54	101.003	
Ratchet clamp for BW 40.28	101.001	



X-ON Electronics

Largest Supplier of Electrical and Electronic Components

Click to view similar products for [Frequency Counters](#) category:

Click to view products by [MULLER](#) manufacturer:

Other Similar products are found below :

[MFG-2120MA](#) [3.060.200.383](#) [HK47.C.10-80VDC](#) [3.130.251.071.056](#) [3.220.401.085](#) [3.223.401.351](#) [3.240.201.075](#) [3.241.201.075](#)
[3.242.201.075](#) [3.245.201.351](#) [TFG-3610E](#) [TG5012A](#) [AX-DG105](#) [AX-DG2010AF](#) [3.100.200.383](#) [HMF2525](#) [3.130.251.075.056](#)
[3.130.251.351.056](#) [BZ1224](#) [BZ220A](#) [3.220.401.351](#) [3.240.201.351](#) [3.241.201.351](#) [3.242.201.351](#) [3.245.201.075](#) [3.474.901.075](#)
[3.474.901.084](#) [3.474.911.373](#) [DDS-3X25](#) [0.170.000.075](#) [0.135.200.373](#) [TFG-3620E](#) [0.170.000.351](#) [TGF4162](#) [TGF4242](#) [GFG-3015 + RS232](#)
[HK30.G.48.230VAC/50HZ](#) [HK30.G.48.24VAC/50HZ](#) [0.135.200.302](#) [1803D](#) [53220A/903](#) [1856D](#) [GFG-8215A](#) [GFG-8250A](#) [BG4017-1248](#)
[BW4018-23050](#) [BW4018-2450](#) [BW7089-23050](#) [190.004](#) [190.003](#)