

PRODUCT OFFER



*lightBox is the smallest wireless light controller in the world* which allows you to control both colourful (RGB) and plain LED lighting by a smartphone or tablet

this is the younger brother of the wLightBox controller, based on the fourth-generation Bluetooth technology

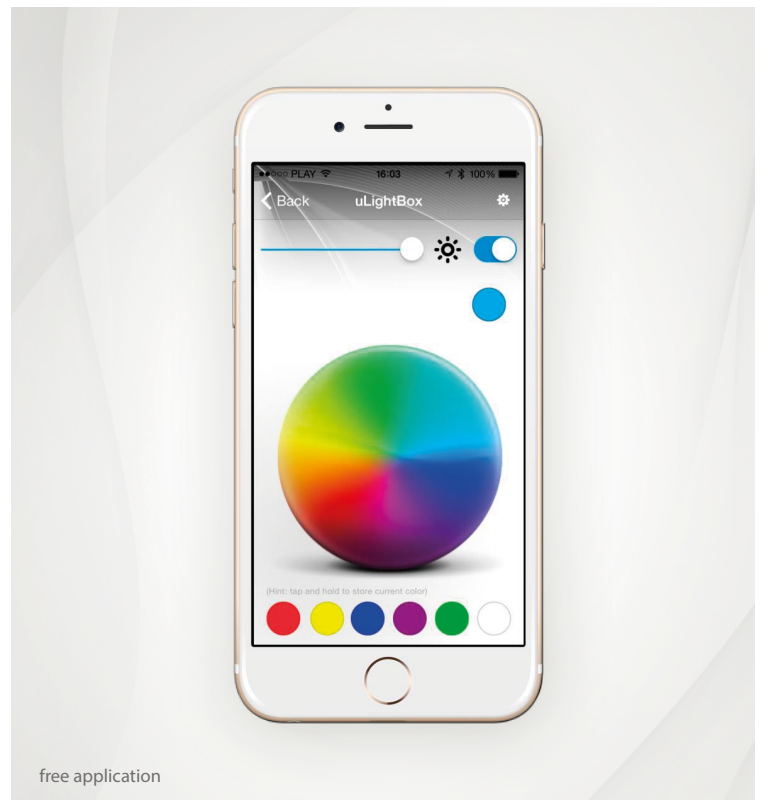
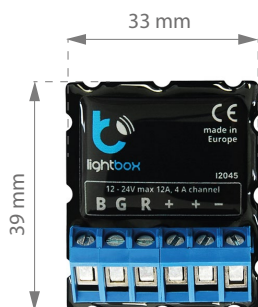
It allows you to control the LED lighting by using a specially designed, free BleBox app, which is available on mobile Apple and Android devices

It allows you to control the RGB LED lighting or 3 plain LED channels

its use is simple and gives you the possibility to create amazing lighting effects

with a single mobile device (Smartphone or Tablet) you can control many sources of light at the same time

due to its durability and very small size it is often used in the automotive industry, and sailing (e.g. yachts illumination)



free application

## TECHNICAL SPECIFICATIONS

electrical parameters					
supply voltage	▶	12 – 24 V DC	number of channels	▶	3
maximum current	▶	12 A	current /channel	▶	4 A
type of control	▶	PWM			
physical characteristics of the device					
dimensions	▶	39 x 33 x 20 mm	operating temperature range	▶	from 0 to + 40°C
housing	▶	made of polyurethane composition not containing halogens, Self-extinguishing for Thermal class B (130 °C)	protection	▶	inverted polarization, ESD
characteristics of the communication					
communication technology	▶	Bluetooth Low Energy 4.0	independent channels	▶	3
transmission type	▶	bi-directional	power signal	▶	1mW
range	▶	up to 20 m in open space (inside buildings the range may be limited to 10m depending of the construction materials used in building and device positioning)	compatibility	▶	Apple iPhone 4s, iPad 3, iPad mini, Android 4.3 and newer



lighting

Products associated with lightning



car

Devices associated with the automotive industry



bluetooth

Device using wireless short-range communication

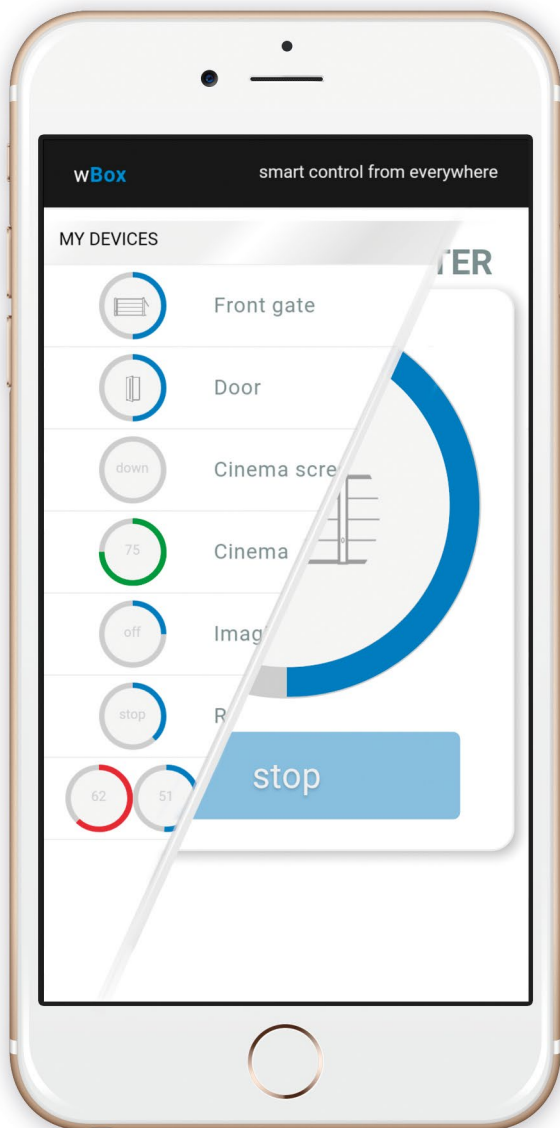


smartphone

Devices controlled using smartphones and tablets



- ▶ simplicity and scalability



**Smart homes** were from the beginning associated with expensive and complicated installations. Over the past five years, cheaper and less complicated solutions have appeared on the market. However, they have some disadvantages. To work they require a central unit, which is an intermediary device which makes possible the communication between the user (and more specifically the Smartphone or Tablet) and the controller. That device is far more expensive than the individual elements of the system and susceptible to failure. Such damage would cause the paralysis of the entire smart building.

**wBox** is *an unique global solution*. To operate, WBox devices **do not need additional equipment** such as Central Unit or hub. Just a simple WiFi network is enough. After connecting the device with your home network, it can be controlled from any place in the World. Without complicated configuration. You can start from one "cube" lamp or roller shutter controller and then extend **your own smart home** adding another one – according to your needs.

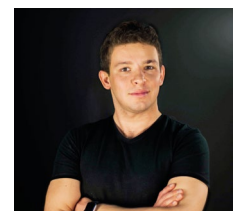
It is a solution created by *a team of inventors and engineers, authors awarded with "The Polish Invention of the year 2014"* and the *Innovators WPROST 2016 award*. They were also nominated to the *"Top Innovators under 35" award*, who up to the present have created over 30 innovative products and services.

Designed and produced entirely in Europe.

**PATRYK ARŁAMOWSKI**

*founder of blebox.eu*

CEO & founder of blebox.eu



**blebox.eu**

Blebox.eu is a brand of high-quality products related to home automation. Created in 2013 by authors of the "Polish Invention of the year 2014" and 30 other technological and product innovations. Within 3 years it has evolved from a local start-up to an international company which provides innovative products to more than 20 countries of the world, including China.

Our products are completely designed (we have our own research laboratories) and produced in the European Union, in particular in Poland and Germany. We take the issues of quality and reliability very seriously. That's why we give on our products a 5 year warranty, creating a brand based on trust.

In 2016 Blebox.eu was awarded with the crystal statuette Innovators 2016 granted by the editors of Wprost, the Ministry of Science and Higher Education and the Ministry of Development, for the most innovative company in Poland.

We invite installers, shops and wholesalers to cooperate with us. For a constant cooperation we offer attractive discounts and the possibility to customize own requirements and creating new solutions.



MORE INFORMATION:

---



**Anahi Lopez**

anahi.lopez@blebox.eu  
tel. +48 731 868 105

---

**www.blebox.eu**

## X-ON Electronics

Largest Supplier of Electrical and Electronic Components

*Click to view similar products for [Power Management IC Development Tools](#) category:*

*Click to view products by [BLEBOX](#) manufacturer:*

Other Similar products are found below :

[EVAL6482H-DISC](#) [EVAL-AD5522EBUZ](#) [EVAL-ADM1060EBZ](#) [EVAL-ADM1073MEBZ](#) [EVAL-ADM1166TQEBZ](#) [EVAL-ADM1168LQEBZ](#) [EVAL-ADM1171EBZ](#) [EVAL-ADM1276EBZ](#) [EVB-EN5319QI](#) [EVB-EN5365QI](#) [EVB-EN6347QI](#) [EVB-EP5348UI](#) [MIC23158YML EV](#) [MIC23451-AAAYFL EV](#) [MIC5281YMME EV](#) [ADM00513](#) [ADM8611-EVALZ](#) [ADM8612-EVALZ](#) [ADM8613-EVALZ](#) [ADM8615-EVALZ](#) [ADP1046ADC1-EVALZ](#) [ADP1055-EVALZ](#) [ADP122-3.3-EVALZ](#) [ADP130-0.8-EVALZ](#) [ADP130-1.2-EVALZ](#) [ADP130-1.5-EVALZ](#) [ADP130-1.8-EVALZ](#) [ADP160UJZ-REDYKIT](#) [ADP166UJ-EVALZ](#) [ADP1712-3.3-EVALZ](#) [ADP1714-3.3-EVALZ](#) [ADP1715-3.3-EVALZ](#) [ADP1716-2.5-EVALZ](#) [ADP1740-1.5-EVALZ](#) [ADP1752-1.5-EVALZ](#) [ADP1754-1.5-EVALZ](#) [ADP1828LC-EVALZ](#) [ADP1870-0.3-EVALZ](#) [ADP1871-0.6-EVALZ](#) [ADP1873-0.6-EVALZ](#) [ADP1874-0.3-EVALZ](#) [ADP1876-EVALZ](#) [ADP1879-1.0-EVALZ](#) [ADP1882-1.0-EVALZ](#) [ADP1883-0.6-EVALZ](#) [ADP197CB-EVALZ](#) [ADP199CB-EVALZ](#) [ADP2102-1.25-EVALZ](#) [ADP2102-1.2-EVALZ](#) [ADP2102-1.875EVALZ](#)