

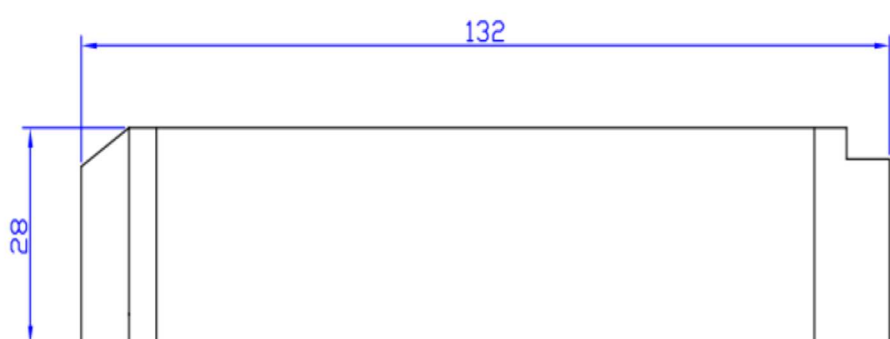
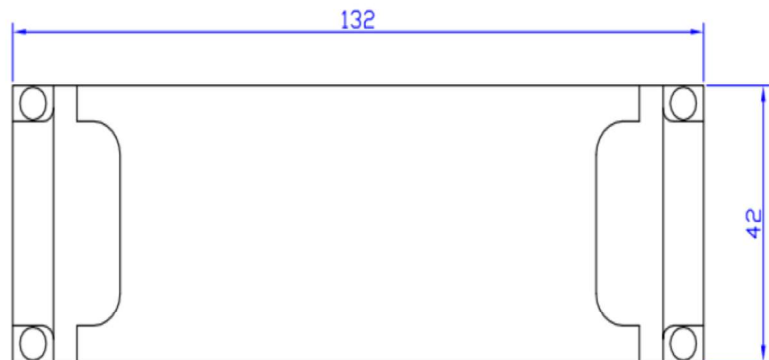
**LED Power Supply Constant Voltage**

<b>Model</b>	<b>LND3612CV</b>
Voltage	12V
Current	3A
Power	36W



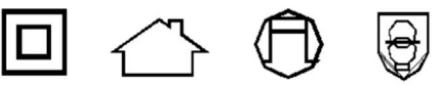



<b>Input</b>	Rated input voltage	230 VAC
	Range of input voltage	220-240VAC
	Frequency	50Hz
	Power Factor	>0.9@Full Load, 240VAC
	Current	0.3 A MAX. @Full Load
	Start-Up time	<0.5S for ERP @Full Load
	Inrush Current	40A MAX. @Full Load. 240 VAC
	Unload Power Consumption	≤0.5W
<b>Output</b>	Unload voltage	12.6VDC MAX
	Load Voltage rang	NC
	Constant Voltage	12V
	Voltage Accuracy	±5% @220-240VAC
	Voltage Regulation	≤3%@Full Load
	Hold-up Time	<1s max,Io=0mA
	Efficiency in full load	≥85%@Full Load ,240VAC
	Ripple	NA
<b>Dimming</b>	Power Max	36W
	Dimmable or not	NA
	Dimming mode	NA
<b>Protection</b>	Dimming current range	NA
	Over load Protection	105-150% Protection type: Auto Restore
	Over Voltage Protection	>16VDC Protection type: Auto Restore
	Short circuit Protection	Protection type: Auto Restore
	Over Temperature protection	Protection type: Auto Restore
<b>HI-pot</b>	Input-Output(V.AC)	3000V/5mA/1min
	Input-FG(V.AC)	NA
	Output-FG(V.AC)	NA
<b>Isolation</b>	Leakage Current	<0.5mA(240VAC)
	Input-Output(V.AC)	≥10MΩ@500VDC
	Input-FG(V.AC)	NA
<b>Environment/Life</b>	Output-FG(V.AC)	NA
	Operating Temperature	-10°C...+40°C
	tc	85°C
	Storage Temperature	-20°C...+60°C
	Humidity	20%-90%RH
	Life time	>30,000h @50°C
<b>Feature</b>	HSF requirement	RoHS
	Dmension	132*42*29(LXWXH)mm
<b>Safety @ EMC</b>	Approval	CE
	Safety standards	EN 61347-1; EN61347-2-13 EN60598-1; EN60598-2-6
	EMI	EN55015; EN61000-3-2 Class C EN61000-3-3
	EMS	EN61547; EN 61000-4-2 - 8KV; 4KV
		Performance Criteria B
	EN 61000-4-5 — 1000V; Performance Criteria C	

LED Power Supply Constant Voltage	
Model	LND3612CV
Voltage	12V
Current	3A
Power	36W



**LABEL:**

		LED POWER SUPPLY	
		LND3612CV	
L	INPUT.....230V~	Constant Voltage	
	50Hz 0.3A	+	
N	OUTPUT.....12V=3A 36W		
	λ>0.9 tc:85°C ta:40°C •tc	SELV	
		MADE IN CHINA	
			

# X-ON Electronics

Largest Supplier of Electrical and Electronic Components

*Click to view similar products for [LED Power Supplies category](#):*

*Click to view products by [Espe manufacturer](#):*

Other Similar products are found below :

[ESS015W-1000-12](#) [EUC-075S105DT](#) [PDA-WIFI](#) [PIFC-K250F](#) [PITB-K222A](#) [ALD-514012PJ134](#) [LB240S24KH](#) [LMH020-SPLC-0000-0000001](#)  
[LMD600-0100-C1A7-7030000](#) [79534](#) [79535](#) [EUG-200S210DT](#) [ESS030W-1050-21](#) [ESS030W-0900-32](#) [BPOXL 4-12-035](#) [SLM160W-3.9-40-ZA](#)  
[LE42S24VN](#) [ESS010W-0180-42](#) [ESS010W-0350-24](#) [ESS010W-0200-42](#) [ESM060W-1400-42](#) [PDA080B-1A0G](#) [ESS010W-0500-12](#) [PDA150B-](#)  
[S1A5G](#) [ZPS-20](#) [SLM140W-1.05-130-ZA](#) [UCP20U-480-36](#) [EVM120W-3000-40](#) [ESS040W-1400-27](#) [ESS015W-0700-18](#) [ESS010E-0250-42](#)  
[EVM120W-2700-42-ECN2](#) [79278](#) [MU060C105AQ\\_0-10V](#) [EUD-150S350DVA](#) [LSWC-040S105PS](#) [LWA320-C420-ARK-B](#) [50304](#) [HVG-320-](#)  
[36AB](#) [HVG-320-54AB](#) [ELEMENT 30/220-240/700 S](#) [OT FIT 38/220-240/900 CS S MINI](#) [ELEMENT 180/220-240/24 G2](#) [NPF-120D-24BE](#) [NPF-](#)  
[120D-48BE](#) [NPF-120D-54BE](#) [PWM-40-36](#) [PWM-60-36](#) [LUD-060S150BSF](#) [RCD-48-1.00](#)