

LogiLink®

Flat Angle Plug For Self-Assembly

Art. No.: LPS228



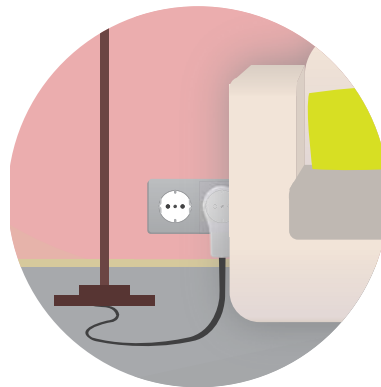
Space saving flat design allowing you to push the furniture up against the wall.

Features:

- » CEE 7/7 plug, 250V/16A, extra flat, IP20
- » Suitable for 1.0mm²/1.5mm² cable
- » For self-assembly
- » With ergonomic folding handle
- » Flat connector fits behind all furniture
- » Color: white



With ergonomic folding handle



Flat plug fits all furniture



Zur
Selbstmontage

250V
16A

Geeignet für
1,5mm²
Kabel

Package Contents:

- » 1 x Flat Plug

Package Informations:

- » Packing Dimension: 135 x 160 x 50mm
- » Packing Weight: 0.05kg
- » Carton Dimension: 420 x 235 x 190mm
- » Carton Q'ty: 100pcs
- » Carton Weight: 6kg



RoHS
compliant



* The connection must be installed by a qualified electrician!

* The specifications and pictures are subject to change without notice.

*All trade names referenced are the registered namework of their respective owners.



LPS228



4 052792 048513

Made in China

Best Connectivity

X-ON Electronics

Largest Supplier of Electrical and Electronic Components

Click to view similar products for [AC Power Entry Modules](#) category:

Click to view products by [Logilink](#) manufacturer:

Other Similar products are found below :

[0098.0050](#) [6-1609987-9](#) [6167.0002](#) [7-6609955-2](#) [FN389-4-22](#) [FN9233ER-12-06](#) [FN9233S1-10-06](#) [FN9233S1-8-06](#) [FN9233S1B-8-06](#)
[FN9233S1R-1-06](#) [FN9233S1R-12-06](#) [FN9233SB-1-06](#) [FN9233SB-12-06](#) [FN9233SB-8-06](#) [FN9233SR-10-06](#) [FN9233SR-3-06](#) [FN9244B-15-06](#)
[HI](#) [FN9244EB-3-06](#) [FN9244EB-8-06](#) [FN9244ER-15-06](#) [FN9244ER-8-06](#) [FN9244ES1-8-06](#) [FN9244ESB-8-06](#) [FN9244EU-6-06](#)
[FN9244R-12-06](#) [FN9244R-3-07](#) [FN9244R-8-06](#) [FN9244S1-10-06](#) [FN9244S1-12-06](#) [FN9244S1-3-06](#) [FN9244S1B-6-06](#) [FN9244S1R-3-06](#)
[FN9244S-6-06](#) [FN9244SB-10-06](#) [FN9244SB-6-06](#) [FN9244SB-8-06](#) [FN9244SR-10-06](#) [FN9244SR-6-06](#) [FN9244U-3-06](#) [FN9244U-8-06](#)
[FN9260A-6-06](#) [PE00SSSXB](#) [Fuse-H-EUR-1](#) [Fuse-H-USA-1](#) [PM00XD000](#) [PS0SSDBX0](#) [PS0SXSH3B](#) [A-0701-HT-H](#) [RAPC3FG](#) [15EJMS8](#)