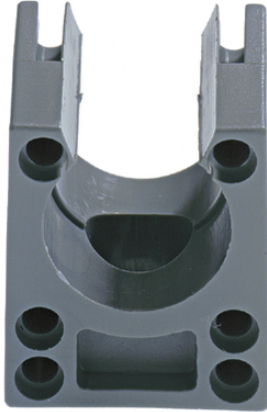


## SILVYN® KLICK-S

SILVYN® KLICK-S - conduit holder for SILVYN® RILL



### Benefits

- Fast assembly
- Easy to disassemble
- High tensile strength
- Conduit retained by rib

### Application range

- In combination with protective conduit
- SILVYN® RILL PA 6
- SILVYN® RILL PA 12
- Fastening of conduits on machine walls for all applications

### Product features

- Impact-resistant polyamide

### Product Make-up

- Multi-part conduit holder with M5 borehole for fixation

### Technical Data

|                        |   |
|------------------------|---|
| Classification ETIM 5: | ETIM 5.0 Class-ID: EC001171<br>ETIM 5.0 Class-Description: Holder for protective hose |
| Classification ETIM 6: | ETIM 6.0 Class-ID: EC001171<br>ETIM 6.0 Class-Description: Holder for protective hose |
| Colour delivered:      | Grey (RAL 7031)<br>Black (RAL 9011), UV-resistant                                     |
| Material:              | PA6   |
| Temperature range:     | -40°C to +105°C   |

### Note

Photographs and graphics are not to scale and do not represent detailed images of the respective products. Prices are net prices without VAT and surcharges. Sale to business customers only.

| Article number       | Nominal size | For conduit with outer Ø |
|----------------------|--------------|--------------------------|
| SILVYN® KLICK-S grey |              |                          |
| 61811110             | 10           | 10                       |
| 61811120             | 13           | 13                       |
| 61811130             | 16           | 15.8                     |
| 61811190             | 18           | 18.5                     |
| 61811140             | 21           | 21.2                     |
| 61811150             | 28           | 28.5                     |
| 61811160             | 34           | 34.5                     |
| 61811170             | 42           | 42.5                     |
| 61811180             | 54           | 54.5                     |

Last Update (05.04.2018)

©2018 Lapp Group - Technical changes reserved

Product Management [www.lappkabel.de](http://www.lappkabel.de)

You can find the current technical data in the corresponding data sheet.

PN 0456 / 02\_03.16

## X-ON Electronics

Largest Supplier of Electrical and Electronic Components

*Click to view similar products for [Conduit Fittings & Accessories](#) category:*

*Click to view products by [Lapp Kabel](#) manufacturer:*

Other Similar products are found below :

[S53.35A](#) [260-416](#) [DM0240-1/2A](#) [817.612.0](#) [55506625](#) [1.511.2001.50](#) [1.533.1601.50](#) [1.533.2001.50](#) [52005810](#) [817.716.0](#) [712.015.0](#) [216-420](#) [2276](#) [2663-P](#) [C2070-P](#) [3582V](#) [2643-P](#) [4975](#) [2644-P](#) [90480](#) [2404-P](#) [1047561](#) [2723-P](#) [55506355](#) [1.513.1101.14](#) [55502461](#) [55502462](#) [55502463](#) [55502464](#) [55502473](#) [166-22214](#) [166-22215](#) [166-24800](#) [166-25801](#) [166-30318](#) [SHR-C1](#) [2037 12-20 LGR](#) [2037 16-24 LGR](#) [HP50SS](#) [55502470](#) [SH PA6 BL ND10](#) [5308 946](#) [295.012.0](#) [2955 M16](#) [2955 M25](#) [2955 M32](#) [2955 M40](#) [297.212.0](#) [297.240.0](#) [298.012.0](#)