

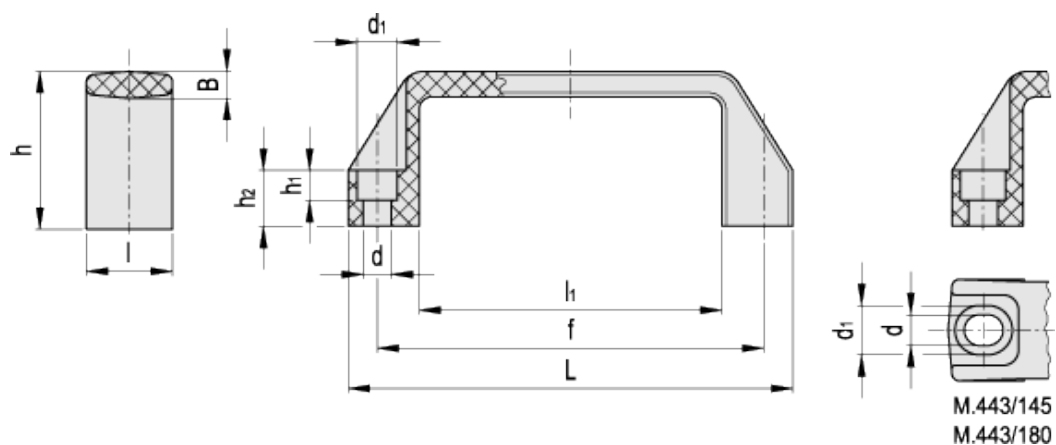
M.443 N-CH



Handles



ELESA Original design



technical informations

Material

Glass-fibre reinforced polypropylene based (PP) technopolymer. Resistant to solvents, oils, greases and other chemical agents.

Colour

Black, matte finish.

Standard executions

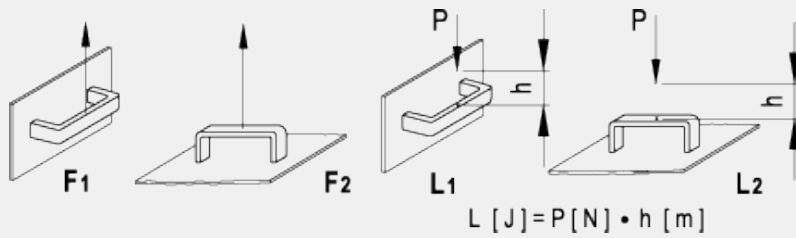
Pass-through holes for cylindrical-head screws with hexagon socket.
M.443/180 N-CH: slotted assembly holes for fitting hole centres from 149 to 152 mm.

Features and applications

This handle made out of polypropylene based technopolymer represents an alternative to [M.443.CH](#). See [Technical Data](#) for resistance to chemical agents. See table below for mechanical resistance.

Technical data

Tensile stress and impact strength: F1, F2, L1 and L2 values reported in the table are the result of breaking tests carried out with the appropriate dynamometric equipment under the test conditions shown in the figure with ambient temperature.



Standard Elements		Main dimensions						Mounting holes				F ₁	F ₂	L ₁	L ₂	Weight
Code	Description	L	f	h	B	I	I ₁	d	d ₁	h ₁	h ₂	[N]	[N]	[J]	[J]	g
37031	M.443/110 N-CH	109	93.5±0.5	38	6	21	74	6.5	10.5	7	13	1700	1300	8	3	21
37132	M.443/140 6-N-CH	137	117±1	41	7	26	93	6.5	10.5	6	15	2000	1500	10	4	36
37131	M.443/140 8-N-CH	137	117±1	41	7	26	93	8.5	13.5	8.5	15	2000	1500	10	4	34
37143	M.443/145-6-N-CH	142	120÷122±1	41	7	26	100	8.5	13.5	6.5	10.5	1600	1500	12	5	37
37144	M.443/145 N-CH	142	120÷122±1	41	7	26	100	8.5	13.5	8.5	15	1600	1500	12	5	36
37181	M.443/150 N-CH	150	132±1	45	7	27	108	8.5	13.5	8.5	16	2000	1300	12	5	40
37186	M.443/170 N-CH	160	140±1	46	7	27	113	8.5	13.5	8.5	16	1800	1300	13	6	44
37196	M.443/180 N-CH	172	149÷152±1	47	7	27	125	8.5	13.5	8.5	17	1800	1300	14	7	46
37246	M.443/190 N-CH	179	160±1	50	7.5	28	132	8.5	13.5	8.5	17	1800	1300	15	7	54
37231	M.443/200 N-CH	196	179±1	50	7.5	28	151	8.5	13.5	8.5	17	1800	1300	16	8	62
37281	M.443/260 N-CH	260	235±1	54	8.5	30	201	10.5	16.5	10.5	20	1700	1700	17	11	92



ELESA and GANTER models all rights reserved in accordance with the law. Always mention the source when reproducing our drawings.

STANDARD MACHINE ELEMENTS WORLDWIDE

X-ON Electronics

Largest Supplier of Electrical and Electronic Components

Click to view similar products for [Mounting Fixings](#) category:

Click to view products by [Elesa & Ganter](#) manufacturer:

Other Similar products are found below :

[5912235-2](#) [007310](#) [007541](#) [6-141-P](#) [620HA038NF09](#) [620HA038NF11](#) [CTJ420E028-513](#) [M81714/60-12-01](#) [M81714/60-22-01](#) [L/C](#)
[MA1EAF1200](#) [70-584649-01P](#) [71-074914-006](#) [71-215091-8S](#) [712HA170B23128-N](#) [71-344699-4S](#) [71-441549-19S](#) [71-441864-5S](#) [71-](#)
[490451-4H](#) [EX-13-3-B-16-325PN](#) [75-69116-8S](#) [75-69211-3P](#) [75-69220-27S](#) [75-69224-5S](#) [75-69614-2S](#) [770-006A109](#) [770-006A109R](#) [770-](#)
[006A207](#) [770-006A208W1](#) [770-006A209](#) [770-006A306](#) [770-006A703W1](#) [770-006A704](#) [770-006A704W1](#) [770-006A705](#) [770-006A706](#)
[770-006A706W1](#) [770-006A707](#) [770-006A709](#) [770-007A203](#) [770-007A203W1](#) [770-007A204W1](#) [770-007A207W1](#) [770-007A703](#) [770-](#)
[007A704W1](#) [770-007A706](#) [770-007A707W1](#) [770-010Y208](#) [770-010Y308](#) [770-010Y705](#) [770-010Y706](#)