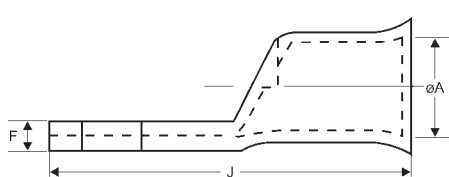
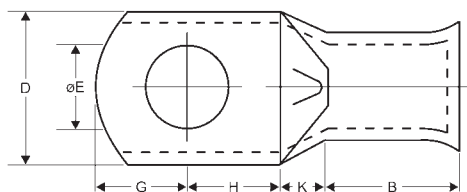




Copper Tube • HD Terminals • Tooling

Copper Tube Terminals 1.5–240 Sq mm – Bell Entry



All Copper Tube Terminals have a radiused entry

Cable Size sq mm	Stud Size mm dia	Nominal Dimensions mm									Part Number
		ØA	B	D	ØE	F	G	H	J	K	
10	4	4.5	12	8.7	4.2	1.42	4	5	24	3	DX 10-4
	5	4.5	12	8.7	5.2	1.42	4	5	24	3	DX 10-5
	6	4.5	12	12	6.2	1.3	5	6	26	3	DX 10-6
	8	4.5	12	12	8.4	1.03	6	9	30	3	DX 10-8
	10	4.5	12	19	10.5	1.8	10	10	35	3	DX 10-10
	12	4.5	12	19	13	1.8	12	12	39	3	DX 10-12
16	5	5.5	15	11	5.2	1.4	4	9	32	4	DX 16-5
	6	5.5	15	11	6.5	1.4	5	9	33	4	DX 16-6
	8	5.5	15	11	8.4	1.31	6	9	34	4	DX 16-8
	10	5.5	15	19	10.3	1.8	10	10	39	4	DX 16-10
	12	5.5	15	19	13	1.8	12	12	43	4	DX 16-12
25	5	7	15	12.6	5.2	2	5	6	30	4	DX 25-5
	6	7	15	12.6	6.5	2	5	6	30	4	DX 25-6
	8	7	15	16	8.4	1.6	6	9	34	4	DX 25-8
	10	7	15	17.5	10.5	1.5	10	10	39	4	DX 25-10
	12	7	15	17.5	13	1.5	12	12	43	4	DX 25-12
35	6	8.6	18	15.7	6.4	2.2	8	8	39	5	DX 35-6
	8	8.6	18	15.7	8.4	2.2	8	8	39	5	DX 35-8
	10	8.6	18	16.2	10.5	2	9	11	43	5	DX 35-10
	12	8.6	18	18	13	1.8	9.2	10.8	43	5	DX 35-12
50	6	9.6	23	17.4	6.4	2.4	8.5	8.5	46	6	DX 50-6
	8	9.6	23	17.4	8.4	2.4	8.5	8.5	46	6	DX 50-8
	10	9.6	23	17.4	10.5	2.4	10	10	49	6	DX 50-10
	12	9.6	23	17.2	13	2.4	12	13	54	6	DX 50-12

SPECIFICATION REQUIREMENT

- Finish Electro tinned
- Copper Conductivity to 97% IACS
- Copper tube double annealed
- All terminals up to 240mm² will have bell mouth cable entrance
- Working temperature up to 180°C (Standard)
- Working temperature with nickel plating up to 350°C (Special)



X-ON Electronics

Largest Supplier of Electrical and Electronic Components

Click to view similar products for [Davico](#) manufacturer:

Other Similar products are found below :

[Davico](#)