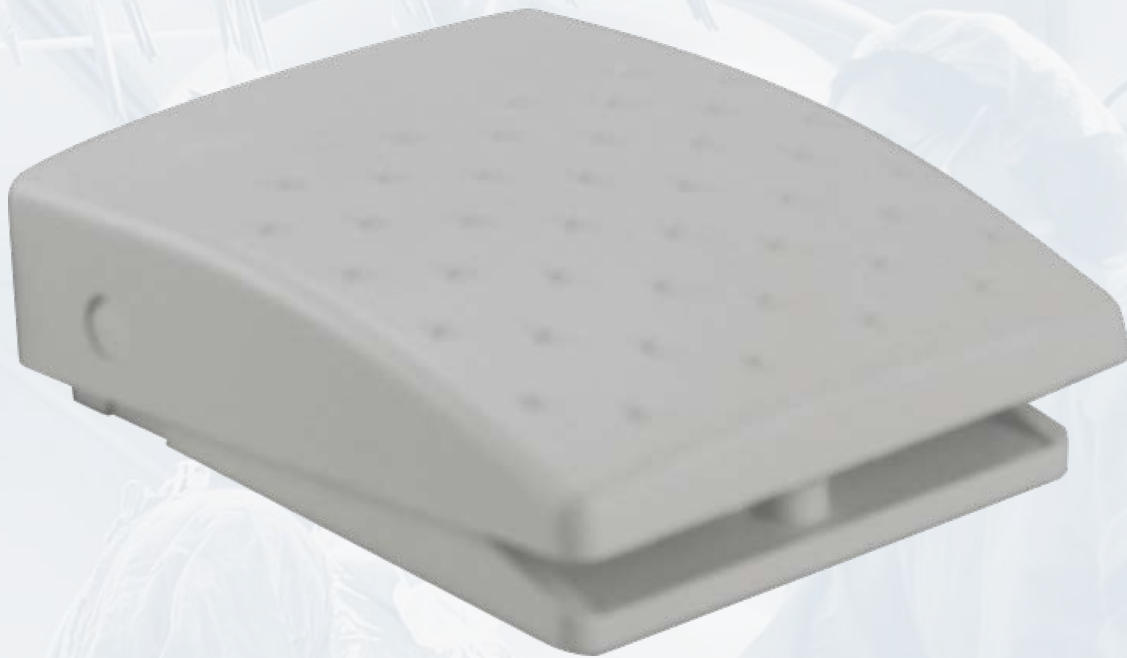


SLIM-LINE

FOOT CONTROL



Engineered with an eagle eye on quality and value, the new Slim-Line foot switch from LINEMASTER® soars above the rest. With the choice of SPDT, SPDT (2 stage) or DPDT the Slim-Line foot

switch is a versatile solution for applications requiring a precision lightweight or medium weight foot control. Form follows function in the Slim-Line's small size, graceful curves and patented design, while non-skid feet and raised dimples ensure positive

performance. Designed to be fully submersible in water or cleaning solution. The Slim-Line foot switch is available in a reinforced polymeric material. You can count on the famous consistency and familiar action you get with every LINEMASTER® Switch.

LINEMASTER Switch Corporation
Tel (860) 974-1000

29 Plaine Hill Road, P.O. Box 238
Fax (860) 974-0691

Woodstock, Connecticut 06281-0238 USA
Fax (800) 974-FOOT(3668) Toll Free US Only

www.linemaster.com/ds/slimline

REST EASY

KNOWING THE SLIM-LINE IS UNDER FOOT



EN 60529 Degree of Protection IP20 (IP68 Upon Request)

Driptight • Dusttight • Watertight • Corrosion Resistant
SMALL LIGHTWEIGHT LOW PROFILE DESIGN

Materials of Construction:

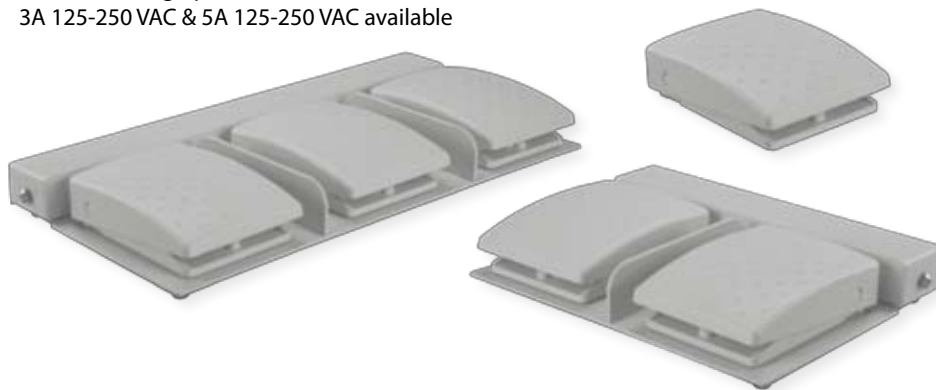
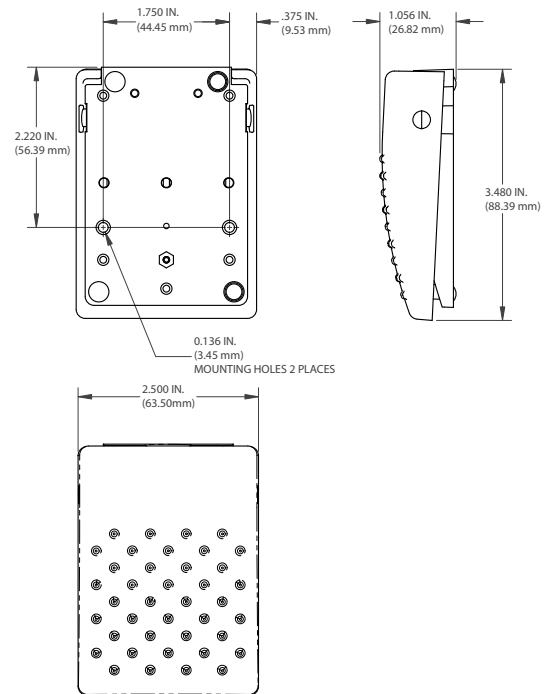
- Cover & Base formed from Light Gray (PMS 427C) ABS Polymeric Material
- Non-glare finish
- Silver Alloy contacts
- SPDT, DPDT, Two-Stage, Momentary Operation
- Integrated adjustable strain relief clamp accommodates cord sizes from .250 Dia. to .400 Dia.

Features & Benefits:

- Maximum versatility, total performance in a small package
- Rustproof and corrosion resistant
- Mounting holes provided for rigid mounting to floor or equipment
- Non-Skid Feet
- Raised Dimples on treadle for positive traction during operation
- 10A 125-250 VAC ratings
- Designed to meet UL, CSA & CE requirements

Options:

- Custom colors and color matching available with quantity orders
- Fully submersible in water (IP68 Only)
- Twin & Triple models available
- Full & Twin Guards as well as accessory base units available for configurations using multiple switches
- Custom connectivity options including Universal Serial Bus (USB)
- Custom cabling options
- 3A 125-250 VAC & 5A 125-250 VAC available



Single	
Size (HxWxD):	1.05 x 2.50 x 3.48 In.
Weight:	3.7 oz.
Twin	
Size (HxWxD):	2.0 x 11.75 x 6.0 In.
Weight:	3.25 lbs.
Triple	
Size (HxWxD):	2.5 x 17.0 x 6.0 In.
Weight:	11 lbs.

This device is of an application specific design. Please contact LINEMASTER® for additional information: 1-860-974-1000.

AGENCY APPROVALS	EN 60529 Degree of Protection	CATALOG NUMBER	DESCRIPTION	CIRUIT	FORM	ELECTRICAL RATINGS
	IP20	SL1-S	Single Pedal/Momentary	SPDT	C	10A 125-250 VAC
		SL2-S		SPDT - 2 Stage		
		SL4-S		DPDT		
	IP68	SL1-SWBNO210*	Single Pedal/Momentary	SPDT	C	5A 125-250 VAC
		SL2-SWBNO410**		SPDT - 2 Stage		
		SL4-SWANO410**	Single Pedal/Momentary	DPDT	C	3A 125-250 VAC
	SL4-SWBNO310***	Single Pedal/Momentary	DPDT	C	5A 125-250 VAC	
	SL4-SWBNO410**		DPDT			

* Supplied with 10 ft. , 2 conductor, 18 awg cord; ** Supplied with 10 ft., 4 conductor, 18 awg cord; *** Supplied with 10 ft., 3 conductor, 18 awg cord

LINEMASTER Switch Corporation
 Tel (860) 974-1000

29 Plaine Hill Road, P.O. Box 238
 Fax (860) 974-0691

Woodstock, Connecticut 06281-0238 USA
 Fax (800) 974-FOOT(3668) Toll Free US Only

www.linemaster.com/ds/slimline

X-ON Electronics

Largest Supplier of Electrical and Electronic Components

Click to view similar products for [Linemaster manufacturer](#):

Other Similar products are found below :

[SL1-S](#) [644-D](#) [936-SWHO](#) [GEM-VK3](#) [522-D28](#) [TWIN-T-91-SC48](#) [3H-25H2-S4HOX](#) [T-91-PS](#) [41SH12](#) [4C-30F2-S](#) [4H-30H2-DH](#) [971-DC3J](#) [531-SWHO](#) [78SN1](#) [511-B4O](#) [D41-SNO28](#) [575-DWHA](#) [971-DC3JM](#) [491-SC36MP](#) [514-N3](#) [936-SWH](#) [632-SC3](#) [571-DWH](#) [81SH12](#) [975-X11](#) [531-SWHOX](#) [534-SS](#) [636-S](#) [T-91-SC3](#) [971-SA](#) [971-SO](#) [3L-30A2-S](#) [531-SWHOC2](#) [LSC-805-4](#) [GEM-V36](#) [491-SC36](#) [971-SC26](#) [T-91-SWANOS](#) [634-DA](#) [3-30A2-SI](#) [TWIN-632-S](#) [972-S](#) [3B-30A2-S](#) [531-SWH](#) [971-SM](#) [522-B12](#) [632S TWIN DIVIDER](#) [T-91-SC36](#) [642-S](#) [522-N42](#)