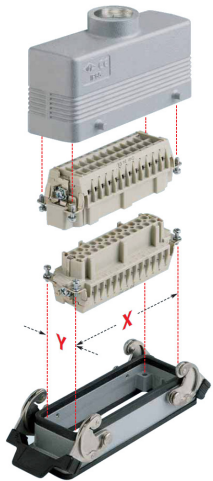


## ILME Rectangular Multipole Connectors

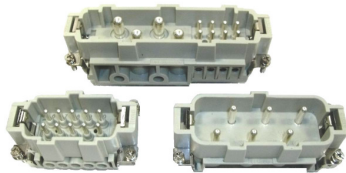


Manufactured to EN61984

To facilitate the correct selection of enclosure for the electrical insert required, the 'size' definition as well as the part number is indicated.

Enclosure Size	X-Y Insert Fixing Centres in mm
21.21	(single screw)
32.13	32 x 13
49.16	49.5 x 16
66.16	66 x 16
66.40	66 x 16 (2 inserts)
44.27	44 x 27
57.27	57 x 27
77.27	77.5 x 27
104.27	104 x 27
77.62	77.5 x 27 (2 inserts)
104 x 62	104 x 27 (2 inserts)

## Screw Termination Connector Inserts



16Amp to 80Amp

Self-extinguishing thermoplastic resin UL94VO

EN61984/CE marked /UL/CSA/CQC approved.

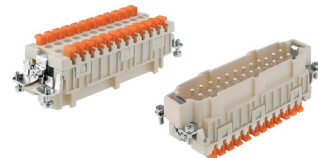
Not for connection or disconnection when live. AC/DC rated.

Inserts suitable for ILME enclosures, sizes as indicated.

Wire sizes:  
16A, 0.5 - 2.5mm<sup>2</sup>  
35A, 1.5 - 6mm<sup>2</sup>  
80A, 4 - 16mm<sup>2</sup> (16A auxiliary. 2 pole aux. 0.25 - 2.5mm<sup>2</sup>, 8 pole aux. 0.75 - 2.5mm<sup>2</sup>)

Description	Enclosure Size	Mfts No.	FARNELL No.
<b>CNE series, 16A, 500V.</b>			
Male 6P+E	44.27	CNEM06T	2144562
Female 6P+E	44.27	CNEF06T	2144563
Male 10P+E	57.27	CNEM10T	2144564
Female 10P+E	57.27	CNEF10T	2144565
Male 16P+E	77.27	CNEM16T	2144567
Female 16P+E	77.27	CNEF16T	2144568
Male 24P+E	104.27	CNEM24T	2144569
Female 24P+E	104.27	CNEF24T	2144570
<b>CP series, 35A, 415V L-N, 690V L-L.</b>			
Male 6P+E	77.27	CPM06	2144571
Female 6P+E	77.27	CPF06	2144572
<b>CX 80A series, 80A, 415V (16A aux. 230V L-N, 400V L-L)</b>			
Male 4P+E	77.27	CXM4/0	2144573
Female 4P+E	77.27	CXF4/0	2144574
Male 4P+E+2 aux.	77.27	CXM4/2	2144575
Female 4P+E+2 aux.	77.27	CXF4/2	2144576
Male 4P+E+8 aux.	104.27	CXM4/8	2144577
Female 4P+E+8 aux.	104.27	CXF4/8	2144579

## Spring Termination Connector Inserts with SQUICH® actuator button CSH series



16Amp, 500V

Self-extinguishing thermoplastic resin UL94VO

EN61984/CE marked /UL/CSA/CQC approved.

Not for connection or disconnection when live. AC/DC rated.

Inserts suitable for ILME enclosures, sizes as indicated.

Wire size: 0.14 - 2.5mm<sup>2</sup>

Description	Enclosure Size	Mfts No.	FARNELL No.
<b>CSH Inserts</b>			
Male 6P+E	44.27	CSHM06	1847991
Female 6P+E	44.27	CSHF06	1847992
Male 10P+E	57.27	CSHM10	1847993
Female 10P+E	57.27	CSHF10	1847994
Male 16P+E	77.27	CSHM16	1847996
Female 16P+E	77.27	CSHF16	1847997
Male 24P+E	104.27	CSHM24	1847998
Female 24P+E	104.27	CSHF24	1847999

## Spring Termination Connector Inserts CDS series



10Amp, 415V

Self-extinguishing thermoplastic resin UL94VO

EN61984/CE marked /UL/CSA/CQC approved.

Not for connection or disconnection when live. AC/DC rated.

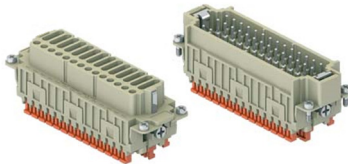
Inserts suitable for ILME enclosures, sizes as indicated.

Wire size: 0.14 - 2.5mm<sup>2</sup> (unferruled) or 0.14 - 1.5mm<sup>2</sup> (ferruled).

Description	Enclosure Size	Mfts No.	FARNELL No.
<b>CDS Inserts</b>			
Male 9P+E	44.27	CDSM09	2687566
Female 9P+E	44.27	CDSF09	2687567
Male 18P+E	57.27	CDSM18	2687568
Female 18P+E	57.27	CDSF18	2687569
Male 27P+E	77.27	CDSM27	2687570
Female 27P+E	77.27	CDSF27	2687571
Male 42P+E	104.27	CDSM42	2687572
Female 42P+E	104.27	CDSF42	2687573
<b>Accessories</b>			
Coding pins (pack of 100)		CRCD5100	2687574

## NEW

## Spring Termination Connector Inserts with SQUICH® actuator button CDSH series



10Amp, 415V

Self-extinguishing thermoplastic resin UL94VO

EN61984/CE marked /UL/CSA/CQC approved.

Not for connection or disconnection when live. AC/DC rated.

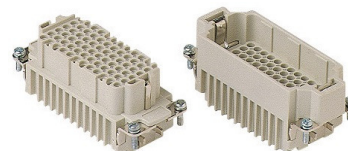
Inserts suitable for ILME enclosures, sizes as indicated.

Wire size: 0.14 - 2.5mm<sup>2</sup> (unferruled) or 0.14 - 1.5mm<sup>2</sup> (ferruled).

Description	Enclosure Size	Mfts No.	FARNELL No.
<b>CDSH Inserts</b>			
Male 9P+E	44.27	CDSHM09	2779980
Female 9P+E	44.27	CDSHF09	2779981
Male 18P+E	57.27	CDSHM18	2779982
Female 18P+E	57.27	CDSHF18	2779983
Male 27P+E	77.27	CDSHM27	2779984
Female 27P+E	77.27	CDSHF27	2779985
Male 42P+E	104.27	CDSHM42	2779986
Female 42P+E	104.27	CDSHF42	2779987
<b>Accessories</b>			
Coding pins (pack of 100)		CRCD5100	2687574

## NEW

## Crimp Termination Connector Inserts CDD series



10Amp, 250V

Self-extinguishing thermoplastic resin UL94VO

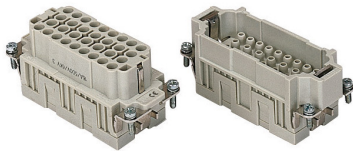
EN61984/CE marked /UL/CSA/CQC/GL/EAC approved.

Inserts are empty and require ILME CD...series of crimp contacts.

Inserts suitable for ILME enclosures, sizes as indicated.

Not for connection or disconnection when live. AC/DC rated.

Description	Enclosure Size	Mfts No.	FARNELL No.
<b>CDD Inserts</b>			
Male 24P+E	44.27	CDDM24	2779988
Female 24P+E	44.27	CDDF24	2779989
Male 42P+E	57.27	CDDM42	2779990
Female 42P+E	57.27	CDDF42	2779991
Male 72P+E	77.27	CDDM72	2779992
Female 72P+E	77.27	CDDF72	2779993
Male 108P+E	104.27	CDDM108	2779994
Female 108P+E	104.27	CDDF108	2779995

**NEW****Crimp Termination Connector Inserts  
CQE series**

16Amp, 500V

Self-extinguishing thermoplastic resin  
UL94VOEN61984/CE marked /UL/CSA/GL/  
CQC/EAC approved.Inserts are empty and require ILME  
CC...series of crimp contacts.Not for connection or disconnection  
when live. AC/DC rated.Inserts suitable for ILME enclosures,  
sizes as indicated.

Description	Enclosure Size	Mfts No.	FARNELL No.
<b>CQE Inserts</b>			
Male 10P+E	44.27	CQEM10	2779996
Female 10P+E	44.27	CQEF10	2779997
Male 18P+E	57.27	CQEM18	2779998
Female 18P+E	57.27	CQEF18	2779999
Male 32P+E	77.27	CQEM32	2780000
Female 32P+E	77.27	CQEF32	2780001
Male 46P+E	104.27	CQEM46	2780002
Female 46P+E	104.27	CQEF46	2780003

**NEW****16Amp Crimp Contacts  
CC... series**

16Amp

EN61984/CE marked/UL/CSA/CQC  
approved.Suitable for ILME 16Amp crimp inserts,  
eg. CQE series.

Silver or Gold plated.

ILME crimp tool CCPZRN or CCPZTP  
required.Not for connection or disconnection  
when live. AC/DC rated.**NEW****10Amp Crimp Contacts  
CD... series**

10Amp

EN61984/CE marked/UL/CSA/CQC/  
approved.Suitable for ILME 10Amp crimp  
inserts, eg. CDD series.

Silver or Gold plated.

ILME crimp tool CCPZRN or  
CCPZTP required.Not for connection or disconnection  
when live. AC/DC rated.

Supplied in packs of 10

Wire size mm <sup>2</sup> (AWG)	Mfts No.	FARNELL No.
<b>Male Silver Plated</b>		
0.14-0.37 (26-22)	CDMA0.3	2780004
0.5 (20)	CDMA0.5	2780005
0.75 (18)	CDMA0.7	2780006
1.0 (18)	CDMA1.0	2780007
1.5 (16)	CDMA1.5	2780008
2.5 (14)	CDMA2.5	2780009
<b>Female Silver Plated</b>		
0.14-0.37 (26-22)	CDFA0.3	2780010
0.5 (20)	CDFA0.5	2780011
0.75 (18)	CDFA0.7	2780012
1.0 (18)	CDFA1.0	2780013
1.5 (16)	CDFA1.5	2780014
2.5 (14)	CDFA2.5	2780015
<b>Male Gold Plated</b>		
0.14-0.37 (26-22)	CDMD0.3	2780016
0.5 (20)	CDMD0.5	2780017
0.75 (18)	CDMD0.7	2780018
1.0 (18)	CDMD1.0	2780019
1.5 (16)	CDMD1.5	2780020
2.5 (14)	CDMD2.5	2780021
<b>Female Gold Plated</b>		
0.14-0.37 (26-22)	CDFD0.3	2780022
0.5 (20)	CDFD0.5	2780023
0.75 (18)	CDFD0.7	2780024
1.0 (18)	CDFD1.0	2780025
1.5 (16)	CDFD1.5	2780026
2.5 (14)	CDFD2.5	2780027

Supplied in packs of 10

Wire size mm <sup>2</sup> (AWG)	Mfts No.	FARNELL No.
<b>Male Silver Plated</b>		
0.14-0.37 (26-22)	CCMA0.3	2780028
0.5 (20)	CCMA0.5	2780029
0.75 (18)	CCMA0.7	2780030
1.0 (18)	CCMA1.0	2780031
1.5 (16)	CCMA1.5	2780032
2.5 (14)	CCMA2.5	2780033
3.0 (12)	CCMA3.0	2780034
4.0 (12)	CCMA4.0	2780035
<b>Female Silver Plated</b>		
0.14-0.37 (26-22)	CCFA0.3	2780036
0.5 (20)	CCFA0.5	2780037
0.75 (18)	CCFA0.7	2780038
1.0 (18)	CCFA1.0	2780039
1.5 (16)	CCFA1.5	2780040
2.5 (14)	CCFA2.5	2780041
3.0 (12)	CCFA3.0	2780042
4.0 (12)	CCFA4.0	2780043
<b>Male Gold Plated</b>		
0.14-0.37 (26-22)	CCMD0.3	2780044
0.5 (20)	CCMD0.5	2780045
0.75 (18)	CCMD0.7	2780046
1.0 (18)	CCMD1.0	2780047
1.5 (16)	CCMD1.5	2780048
2.5 (14)	CCMD2.5	2780049
3.0 (12)	CCMD3.0	2780050
4.0 (12)	CCMD4.0	2780051
<b>Female Gold Plated</b>		
0.14-0.37 (26-22)	CCFD0.3	2780052
0.5 (20)	CCFD0.5	2780053
0.75 (18)	CCFD0.7	2780054
1.0 (18)	CCFD1.0	2780055
1.5 (16)	CCFD1.5	2780056
2.5 (14)	CCFD2.5	2780057
3.0 (12)	CCFD3.0	2780058
4.0 (12)	CCFD4.0	2780059
<b>Early Break Contacts. Male Silver Plated</b>		
0.5 (20)	CC0.5AN	2780060
0.75 (18)	CC0.7AN	2780061
1.0 (18)	CC1.0AN	2780062
1.5 (16)	CC1.5AN	2780063
2.5 (14)	CC2.5AN	2780064

**NEW****Crimping tools for ILME Crimp contacts**

All tooling CE marked



Description	Mfts No.	FARNELL No.
Calibratable Crimp Tool for 10A (CD), 16A (CC) & 40A (CX) crimp contacts	CCPZRN	2780065
Non-Calibratable Crimp Tool For 10A (CD), 16A (CC) crimp contacts	CCPZTP	2780066
Insertion tool for contacts up to 0.75mm <sup>2</sup>	CCINA	2780067
Removal tool for 10A (CD) crimp contacts	CCES	2780068
Removal tool for 16A (CC) crimp contacts	CQES	2780069
"go / no go" control gauge for ILME crimping tool CCPZRN	CCPNPRN	2780070

## Robust Thermoplastic Enclosures for ILME connector inserts



Robust, non-electrostatic thermoplastic material.

EN61984/CE marked /UL/CSA/CQC approved.

IP65, UL Type 12.

Operating temperature -40°C to +90°C

ILME T-Type enclosures suitable for ILME connector inserts, sizes as indicated. Single lever system for size 44.27, all other sizes are double lever system.

Description	Mfts No.	FARNELL No.
<b>Enclosure size 44.27</b>		
Top entry hood M25	TMAV06L25	1848000
Side entry hood M25	TMAO06L25	1848004
Panel mount housing	TCHI06L	1848009
Surface mount housing M25	TMAP06L25	1848014
Cover with pegs	TCHC06L	1848018
<b>Enclosure size 57.27</b>		
Top entry hood M25	TMAV10.25	1848001
Side entry hood M25	TMAO10.25	1848005
Panel mount housing	TCHI10	1848011
Surface mount housing M25	TMAP10.25	1848015
Cover with pegs	TCHC10	1848019
<b>Enclosure size 77.27</b>		
Top entry hood M32	TMAV16.32	1848002
Side entry hood M32	TMAO16.32	1848006
Panel mount housing	TCHI16	1848012
Surface mount housing M32	TMAP16.32	1848016
Cover with pegs	TCHC16	1848020
<b>Enclosure size 104.27</b>		
Top entry hood M32	TMAV25.32	1848003
Side entry hood M32	TMAO24.32	1848007
Panel mount housing	TCHI24	1848013
Surface mount housing M32	TMAP24.32	1848017
Cover with pegs	TCHC24	1848022
<b>Plastic cable glands &amp; reducers</b>		
M20 Grey IP68 cable gland	ASM20I	1848023
M25 Grey IP68 cable gland	ASM25I	1848024
M32 Grey IP68 cable gland	ASM32I	1848025
M25 male to M20 female reducer	ASM25PR	1848026
M32 male to M25 female reducer	ASM32PR	1848027

## Rugged Metal Enclosures for ILME connector inserts 1 Lever System



Die-cast aluminium alloy with epoxy-polyester powder coating.

Stainless steel levers with thermoplastic reinforced glass fibre handle

EN61984/CE marked /UL/CSA/CQC approved.

IP66, UL Type 4/4X/12

Operating temperature -40°C to +125°C

ILME C-type enclosures suitable for ILME connector inserts, sizes as indicated.

Description	Mfts No.	FARNELL No.
<b>Enclosure size 44.27</b>		
Top entry hood M20	MHV06L20	2144581
Top entry coupler M25	MHV06LG25	2144582
Side entry hood M20	MHO06L20	2144583
Panel mount housing	CHI06L	2144584
Panel mount housing with hinged cover	CHI06LS	2144585
Surface mount housing M20	MHP06L20	2144586
Surface mount housing with hinged cover M20	MHP06LS20	2144587
Cover with pegs	CHC06L	2144588
Cover with lever	CHC06LG	2144589
<b>Enclosure size 57.27</b>		
Top entry hood M20	MHV10L20	2144590
Top entry coupler M25	MHV10LG25	2144592
Side entry hood M20	MHO10L20	2144593
Panel mount housing	CHI10L	2144594
Panel mount housing with hinged cover	CHI10LS	2144595
Surface mount housing M20	MHP10L20	2144596
Surface mount housing with hinged cover M20	MHP10LS20	2144597
Cover with pegs	CHC10L	2144598
Cover with lever	CHC10LG	2144599

## Enclosure size 77.27

Top entry hood M25	MHV16L25	2144600
Top entry coupler M32	MHV16LG32	2144601
Side entry hood M25	MHO16L25	2144602
Panel mount housing	CHI16L	2144603
Panel mount housing with hinged cover	CHI16LS	2144604
Surface mount housing M25	MHP16L25	2144605
Surface mount housing with hinged cover M25	MHP16LS25	2144606
Cover with pegs	CHC16L	2144607
Cover with lever	CHC16LG	2144609

## Enclosure size 104.27

Top entry hood M25	MHV24L25	2144611
Top entry hood M32	MAV24L32	2144612
Top entry coupler M32	MAV24LG32	2144613
Side entry hood M25	MHO24L25	2144614
Side entry hood M32	MAO24L32	2144615
Panel mount housing	CHI24L	2144616
Panel mount housing with hinged cover	CHI24LS	2144617
Surface mount housing M25	MHP24L25	2144618
Surface mount housing with hinged cover M32	MAP24LS32	2144619
Cover with pegs	CHC24L	2144620
Cover with lever	CHC24LG	2144622

## Rugged Metal Enclosures for ILME connector inserts 2 Lever System



Die-cast aluminium alloy with epoxy-polyester powder coating.

Stainless steel levers with thermoplastic reinforced glass fibre handle

EN61984/CE marked /UL/CSA/CQC approved.

IP66, UL Type 4/4X/12

Operating temperature -40°C to +125°C

ILME C-type enclosures suitable for ILME connector inserts, sizes as indicated.

Description	Mfts No.	FARNELL No.
<b>Enclosure size 57.27</b>		
Top entry hood M20	MHV10.20	2144623
Top entry coupler M25	MHV10G25	2144624
Side entry hood M20	MHO10.20	2144625
Panel mount housing	CHI10	2144626
Surface mount housing M20	MHP10.20	2144627
Cover with pegs	CHC10	2144628
Cover with levers	CHC10G	2144629
<b>Enclosure size 77.27</b>		
Top entry hood M25	MHV16.25	2144630
Top entry coupler M25	MAV16G25	2144631
Side entry hood M25	MHO16.25	2144632
Panel mount housing	CHI16	2144634
Surface mount housing M25	MHP16.25	2144635
Cover with pegs	CHC16	2144636
Cover with levers	CHC16G	2144637
<b>Enclosure size 104.27</b>		
Top entry hood M25	MHV24.25	2144638
Top entry hood M32	MAV24.32	2144639
Top entry coupler M32	MAV24G32	2144640
Side entry hood M25	MHO24.25	2144641
Side entry hood M32	MAO24.32	2144642
Panel mount housing	CHI24	2144643
Surface mount housing M25	MHP24.25	2144644
Surface mount housing M32	MAP24.32	2144646
Cover with pegs	CHC24	2144647
Cover with levers	CHC24G	2144648

**NEW**

**E-Xtreme® series Corrosion Proof Metal Enclosures for ILME connector inserts**



Aluminium die-cast, Titanium plasma protective treatment & Epoxy powder coating. RAL 7016 (dark grey).

Stainless steel levers.

3000 hours in salt spray test.

Stone chipping, dust and sand blast tested.

CE marked. IP66, IP67, IP69, IP69K.

Operating temperature -40°C to +125°C.

**Applicable test standards:**

- EN 61984:2010-04 Connectors - Safety requirements and tests.
- EN 60529: 1991 + A1: 2000 + A2: 2013 Degrees of protection provided by enclosures.
- EN ISO 9227: 2012 Corrosion tests in artificial atmospheres - Salt spray tests.
- ASTM B117-16 Standard practice for operating salt spray (fog) apparatus.
- EN 60512 (series) Connectors for electronic equipment - Test and measure.
- EN 60068-2-68: 1996 Environmental testing - Part 2-68: Tests - Test L: Dust and sand.
- EN ISO 20567-1: 2005 Paints and varnishes - Determination of stone-chip resistance of coatings - Part 1: Multi-impact testing.

**ILME E-Xtreme® enclosures suitable for ILME connector inserts, sizes as indicated.**  
Single lever system for size 44.27, all other sizes are double lever system.

Description	Mfts No.	FARNELL No.
<b>Enclosure size 44.27</b>		
Top entry hood M20	MHVE06L20M	2780071
Side entry hood M20	MHOE06L20M	2780072
Panel mount housing	C7IE06L	2780073
Surface mount housing M20	M7PE06L20	2780074
<b>Enclosure size 57.27</b>		
Top entry hood M20	MHVE10.20M	2780075
Side entry hood M20	MHOE10.20M	2780076
Panel mount housing	C7IE10	2780077
Surface mount housing M20	M7PE10.20	2780078
<b>Enclosure size 77.27</b>		
Top entry hood M32	MFVE16.32M	2780079
Side entry hood M32	MFOE16.32M	2780080
Panel mount housing	C7IE16	2780081
Surface mount housing M32	M7APE16.32	2780082
<b>Enclosure size 104.27</b>		
Top entry hood M32	MFVE24.32M	2780083
Side entry hood M32	MFOE24.32M	2780084
Panel mount housing	C7IE24	2780085
Surface mount housing M32	M7APE24.32	2780086

**10 Amp Size 21.21 CK.. inserts**



Insert body size 21mm x 21mm and are secured to enclosures via single screw.

10Amp

Self-extinguishing thermoplastic resin UL94VO

EN61984/CE marked /UL/CSA/CQC approved.

Not for connection or disconnection when live. AC/DC rated.

**Inserts suitable for ILME enclosure size 21.21**

Wire sizes:  
CK Screw termination: 0.75 - 2.5mm<sup>2</sup>  
CKS Spring termination: 0.14 - 2.5mm<sup>2</sup>

Description	Mfts No.	FARNELL No.
<b>CK Screw termination. 250V (415V pollution degree 2)</b>		
Male 3P+E	CKM03	2320569
Female 3P+E	CKF03	2320570
Male 4P+E	CKM04	2320571
Female 4P+E	CKF04	2320572
<b>CKS Spring termination. 415V</b>		
Male 3P+E	CKSM03	2320573
Female 3P+E	CKSF03	2320574
Male 4P+E	CKSM04	2320576
Female 4P+E	CKSF04	2320577
<b>Accessories</b>		
Replacement screw/gasket for IP66/67 protection (pack of 10)	CKR65-10	2320578

**Rugged Metal Enclosures for ILME connector inserts size 21.21**



Die-cast zinc alloy with epoxy-polyester powder coating.

Stainless steel levers.

EN61984/CE marked /UL/CSA/CQC approved.

IP44 or IP66/67 with replacement screw/gasket CKR65 (UL Type 4/4X/12).

Operating temperature -40°C to +125°C

Description	Mfts No.	FARNELL No.
Top entry hood M20	MKAV20	2320579
Top entry coupler M20	MKAXVG20	2320580
Side entry hood M20	MKAVA20	2320581
Panel mount housing	CKAX03I	2320582
Angled panel mount housing	CKAX03IA	2320583
Angled surface mount housing M20	MKAXIAP20	2320584
Cover with pegs for male insert	CKA03CA	2320585
Cover with lever for male insert	CKAX03CXA	2320586
Cover with pegs for female insert	CKA03C	2320588
Cover with lever for female insert	CKAX03CX	2320589

**Plastic Enclosures for ILME connector inserts size 21.21**



Self-extinguishing thermoplastic.

EN61984/CE marked /UL/CSA/CQC approved.

IP44 or IP66/67 with replacement screw/gasket CKR65 (UL Type 4/4X/12).

Operating temperature -40°C to +125°C

Description	Mfts No.	FARNELL No.
Top entry hood M20	MKV20	2320590
Top entry coupler M20	MKVG20	2320591
Side entry hood M20	MKVA20	2320592
Panel mount housing	CK03I	2320593
Angled panel mount housing	CK03IA	2320594
Angled surface mount housing M20	MKIAP20	2320595
Cover with pegs for male insert	CK03CA	2320596
Cover with lever for male insert	CK03CXA	2320597
Cover with pegs for female insert	CK03C	2320598
Cover with lever for female insert	CK03CX	2320600



## X-ON Electronics

Largest Supplier of Electrical and Electronic Components

*Click to view similar products for [ILME manufacturer](#):*

Other Similar products are found below :

[TAPC 06 L25](#) [TAPC 10.25](#) [TAPW 06 L25](#) [PE3265PI](#) [CHP 16 LS2](#) [ASM20I](#) [KI3243EB6](#) [CQEM18](#) [CCPZTP](#) [CKAX 03 I](#) [TAPH 10.32](#)  
[TAVC 24 G40](#) [TMAO 24.40](#) [THCH 06 LG](#) [THIW 16](#) [PE3265SMB](#) [PE1663PI](#) [CQEF32](#) [CCES](#) [CQES](#) [CHO 16 X](#) [CHO 06 L13](#) [TAVC 10](#)  
[G32](#) [TAPH 16.32](#) [PE3264SV](#) [CHC10LG](#) [CDDF72](#) [CDMD0.5](#) [CZIR 06 L](#) [TAVW 10 G32](#) [CAVR 06 L21](#) [TAPC 16.32](#) [TAVH 10 G32](#)  
[THIH 06 L](#) [AS C13T](#) [CAP 24 CS29](#) [PEW3263PV](#) [CHO 16 L](#) [TAVC 06 LG32](#) [TAVH 10 G25](#) [CDSHF 09](#) [TAPH 24.32](#) [THIW 10](#) [AS C16T](#)  
[CRR 36](#) [CRR 42](#) [CHP 48 LS](#) [CDSHF 27 N](#) [CHIR 10](#) [TAVC 06 LG25](#)