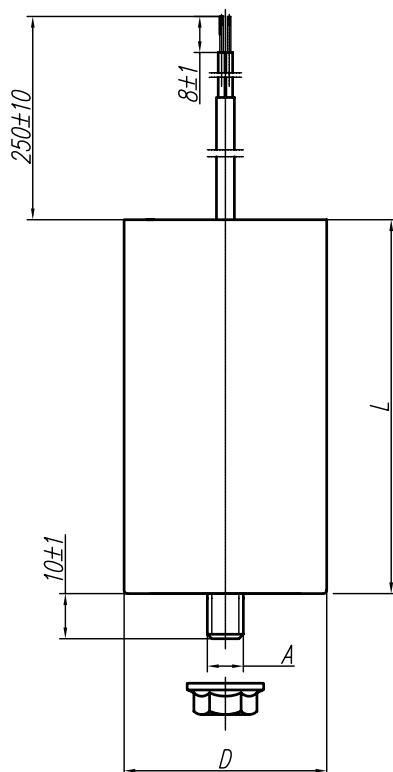


## AC METALLIZED POLYPROPYLENE FILM CAPACITORS FOR MOTOR APPLICATIONS



Rated capacitance $C_N$	Capacitance tolerance	Rated voltage, class	Dimensions		
			$D^{+1}$	$L^{+1}_{-1}$	A
$\mu\text{F}$	%	V~	mm	mm	mm
10	±5	425 V~, klasa A	40	75	M8
12			45	105	
30			60	110	M12
50					

### APPLICATION:

The MKSP-5AL capacitors are intended for use in AC circuits with the frequency of 50Hz. They are mostly used in single-phase electric motors as running capacitors. The capacitors have aluminum housing. The MKSP-5P capacitors can be used in DC circuits with voltage not exceeding the following value:  $V_{dc} = \sqrt{2} * U_n$ .

### TECHNICAL DATA:

- Climatic category: - 25/085/21,
- Dissipation factor: - ≤0.003 at  $f = 50\text{Hz}$
- Dielectric strength
  - between terminals: -  $2U_n / 50\text{Hz} - 60\text{s}$ ,
  - between terminals and case: -  $2500\text{V} / 50\text{Hz} - 60\text{s}$ , <sup>2</sup>
- Standards: - EN 60252-1, VDE 0560 part 8
- Output/terminals: - two-strand wire in insulation  
0,75mm
- expected time of life: - class A - 30000h
- degree protection of enclosure: - S0

This product fulfills the requirements of the RoHS Directive (2011/65/UE).

### NOTE:

1. It may occur misalignment of terminals in relation to the capacitor axis.
2. It is available to implement another lengths of terminals after agreement.

 **MIFLEX S.A.**

ZAKŁADY PODZESPOŁÓW RADIOWYCH  
GRUNWALDZKA 3, 99-300 KUTNO, POLAND  
Telephone: +48 24 355 11 00  
Fax: +48 24 355 11 88  
e-mail: miflex@miflex.com.pl

Revision date  
10.03.2017

Page  
1/1

## X-ON Electronics

Largest Supplier of Electrical and Electronic Components

*Click to view similar products for [Motor Start Capacitors & Motor Run Capacitors](#) category:*

*Click to view products by [Miflex](#) manufacturer:*

Other Similar products are found below :

[SFS37S30-5K400E-F](#) [SFT44S45-5K491E-F](#) [I170V525J-B00](#) [870CG35800AA2J](#) [878AF24600AA1J](#) [MKSP-6P 4UF 450V B](#) [MKSP-6P 5UF 450V B](#) [MKSP-6P 8UF 450V B](#) [I150V468K-G1](#) [I150V510K-G1](#) [I150V530K-C1](#) [I150V540K-H1](#) [I150V560K-C1](#) [I150V560K-G1](#) [I150V620K-G1](#) [I150V640K-G1](#) [I150V645K-B1](#) [I150V660K-C1](#) [I15KV530K-B](#) [I15KV530K-D](#) [I15KV580K-D](#) [I15KV610K-B](#) [I15KV612K-D](#) [I15KV640K-B](#) [I15KV640K-D](#) [I18UV525I-A1 -5%](#) [C274ACF5150WA0J](#) [CBB60A-12/450](#) [CBB60A-1.5/450](#) [CBB60A-20/450](#) [CBB60A-6/450](#) [CBB60E-50/450](#) [CBB60E-6/450](#) [CBB60E-80/450](#) [CBB60G-16/450](#) [CBB60G-6/450](#) [CBB60H-10/450](#) [CBB60H-14/450](#) [CBB60H-30/450](#) [C274ACF4300LF0J](#) [CBB60E-16/450](#) [CBB60A-80/450](#) [C274AC35150AA0J](#) [C276CCF5160LG0J](#) [CBB60E-30/450](#) [CBB60E-2/450](#) [CBB60E-25/450](#) [CBB60H-25/450](#) [C274ACA4250AL0J](#) [C276CC24300AA0J](#)