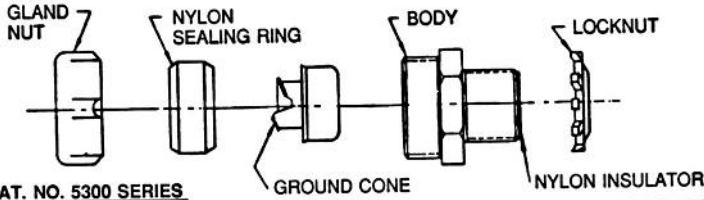
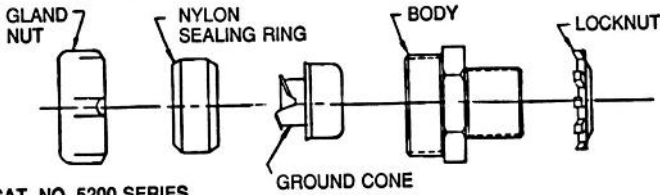


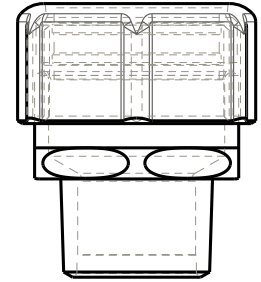
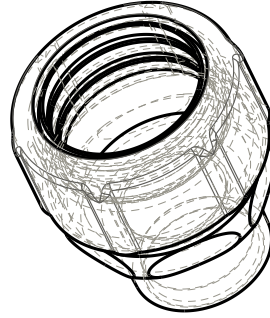
T&B Liquidtight Fittings



CAT. NO. 5300 SERIES



CAT. NO. 5200 SERIES




COMPONENT PARTS 053-71814- PER TABLE**
**053-71814-2 PART NO. FOR 1/2 GLAND

SIZE	CAT NO. COMPLETE	GLAND	SEALING RING	GROUND CONE	BODY	THROAT INSULATOR	LOCKNUT
3/8	5230	-141	-131	-121	-51		-61
3/8	5231	-141	-131	-121	-51		-61
	5331				-41	-372	
1/2	5232	-2	-132	-122	-52		-62
	5332				-42	-372	
3/4	5233	-3	-133	-123	-53		-63
	5333				-43	-373	
1	5234	-144	-134	-124	-54		-64
	5334				-44	-374	
1-1/4	5235	-5	-135	-125	-55		-65
	5335				-45	-375	
1-1/2	5236	-6	-136	-126	-56		-66
	5336				-46	-76	
2	5237	-7	-137	-127	-57		-67
	5337				-47	-77	
2-1/2	5238	-8	-28	-128	-58		-68
	5338				-48	-78	
3	5239	-9	-29	-129	-59		-69
	5339				-49	-79	
4	5240	-10	-30	-130	-60		-70
	5340				-50	-80	

STANDARD FINISH: ZINC PLATE

NOTE: FOR ORDERING COMPLETE DURA-PLATE FITTINGS FINISH THE PREFIX CAT. NO. WITH NUMBERS 040-. FOR ORDERING DURA-PLATE FINISH COMPONENTS PREFIX PART NUMBER WITHOUT 053 WITH 040-. EXAMPLE: 040-71814-2 PART NUMBER FOR 1/2 INCH GLAND.

GENERAL NOTES		 A Member of the ABB Group			
1. ALL DIMENSIONS ARE FOR REFERENCE ONLY. 2. DIMENSIONS IN BRACKETS [] ARE IN METRIC UNITS.					
REVISIONS		DESCRIPTION:			
** SEE ERN (****) FOR APPROVAL SIGNATURES & RELEASE DATE. PROJECT NO: ****		LIQUIDTIGHT FLEXIBLE METAL CONDUIT CONNECTOR			
		ORIGINAL PROJECT NO / (ERN NO)	SHEET NO:	REV. NO:	DRAWING NO:
		RM400840 / (2016670)	1 OF 1	**	WSD-001535

X-ON Electronics

Largest Supplier of Electrical and Electronic Components

Click to view similar products for [ABB manufacturer:](#)

Other Similar products are found below :

[TY27MX](#) [TV10-516R](#) [RF727](#) [2CMA100178R1000](#) [ACS150-01E-09A8-2](#) [KS70-1104](#) [A75-30-11-230V-50HZ](#) [10-100](#) [5SDD](#) [92Z0401](#)
[ESV14-BS](#) [EZS-21-250](#) [F204AC-40/0.1](#) [F362-25/0.03](#) [A40-30-10-84](#) [AF26-30-00-14](#) [AF30-30-00-13](#) [AF460-30-11-68](#) [AF50-30-11-70](#)
[1455](#) [B14-250](#) [EF45-30](#) [ERG297](#) [HSC2-20](#) [1SAM201904R1001](#) [1SAM350000R1003](#) [1SAZ711201R1045](#) [1SAZ721201R1009](#)
[1SAZ721201R1014](#) [1SAZ721201R1025](#) [1SAZ721201R1045](#) [1SBL367001R1300](#) [1SDA057197R1](#) [1SFA611100R1104](#) [1SFA611101R1002](#)
[1SFA611130R1103](#) [1SFA611133R1106](#) [1SFA611143R1101](#) [1SFA611202R1108](#) [1SFA611203R1108](#) [1SFA611210R1101](#)
[1SFA611215R1001](#) [1SFA611216R1108](#) [1SFA611281R1002](#) [1SFA611285R1002](#) [1SFA611702R6006](#) [1SFA616162R1025](#)
[1SFA896106R1100](#) [1SVR730020R0200](#) [IPC4111](#) [OHB125J12](#)