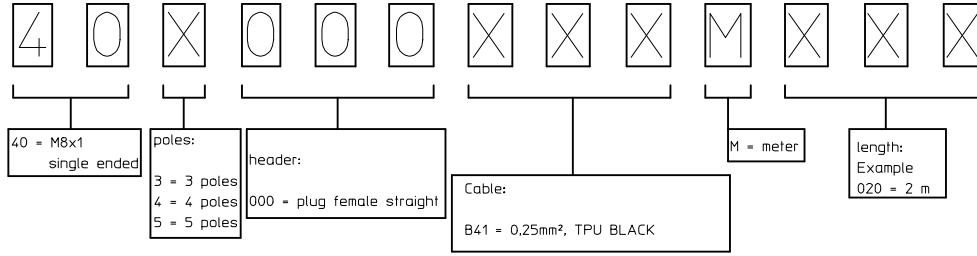


FACE VIEWS

M8 3 POLE		M8 4 POLE		M8 5 POLE	
Pin #.	Wire	Pin #.	Wire	Pin #.	Wire
1	Brown	1	Brown	1	Brown
2	-	2	White	2	White
3	Blue	3	Blue	3	Blue
4	Black	4	Black	4	Black
5	-	5	-	5	Grey

NUMERICAL CODE

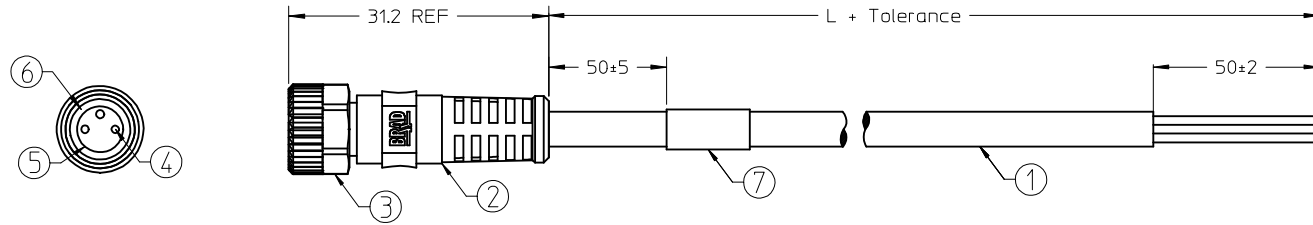


Over	Up to and including	Tolerancja (+)
0	1000	+40 0
1000	5000	+60 0
5000	10000	+80 0
10000	20000	+140 0
20000	30000	+160 0
30000	>	+1 % of length

NOTES

Temperatur Range	-25°C/+80°C
Contact Current Rating	3A
Voltage Rating	3 poles 60V
	4-5 poles 30V
Protection class	IP 67

FEMALE STRAIGHT
M8 PLUG



Bill of Materials

ITEM	QTY.	DESCRIPTION	MATERIAL	FINISH
7	1	LABEL	-	-
6	1	GASKET	FKM	RED
5	1	M8 FEMALE INSERT	ELASTOLLAN	BLACK
4	X	CONTACT FEMALE	BRASS	Cu/Ni
3	1	M8 HEX KNU FEMALE NUT	BRASS	NI3
2	-	MOLDING NATURAL	TPU	BLACK
1	-	CABLE Xx0,25 [mm²]	TPU	BLACK

TITLE BLOCK UPDATED EC NO: IPG2015-1097 DRWN:WSTRASZKIEWI 2014/09/16 CHKD: JMARSZALEK 2014/09/16 APPR: MIWASIECZKO 2015/01/29	QUALITY SYMBOLS	GENERAL TOLERANCES (UNLESS SPECIFIED)	DIMENSION STYLE	SCALE	DESIGN UNITS	THIRD ANGLE PROJECTION	
	▽=0 ∇=0	mm INCH	MM ONLY	---	METRIC		
		4 PLACES ± --- ± --- 3 PLACES ± --- ± --- 2 PLACES ± --- ± --- 1 PLACE ± --- ± --- 0 PLACE ± --- ± ---	DRAWN BY DATE WSTRASZKIEWI 2014/09/02 CHECKED BY DATE JMARSZALEK 2014/09/02 APPROVED BY DATE MIWASIECZKO 2014/09/08	TITLE	CSE M8 XP AC FE STR TPU XM		
		ANGULAR ± 1 ° DRAFT WHERE APPLICABLE MUST REMAIN WITHIN DIMENSIONS	MATERIAL NO. SEE TABLE 1	DOCUMENT NO.	SD-120086-009		
		SIZE A3	THIS DRAWING CONTAINS INFORMATION THAT IS PROPRIETARY TO MOLEX INCORPORATED AND SHOULD NOT BE USED WITHOUT WRITTEN PERMISSION				

TABLE 1

MOLEX PN	ENGINEERING No.
1200868655	403000B41M010
1200868656	403000B41M020
1200868657	403000B41M050
1200868658	403000B41M100
1200868659	404000B41M010
1200868660	404000B41M020
1200868661	404000B41M050
1200868662	404000B41M100
1200868663	405000B41M010
1200868664	405000B41M020
1200868665	405000B41M050
1200868666	405000B41M100

CABLE SPECIFICATION

CABLE TYPE	WIRE GAUGE	CABLE JACKET	UL	CSA	static	flexing	drag chain tested	other
B41	0.25mm ²	TPU black	STYLE 21215	yes	-40°C to +90°C 5xD	-25°C to +80°C 7.5xD	5 mio cycles	WELD SLAG RESISTANCE

For Raw Cable Specification see SD-120209-006

TITLE BLOCK UPDATED EC NO: IPG2015-1097 DRW: WSTRASZKIEWI 2014/09/16 CHKD: JMARSZALEK 2014/09/16 APPR: MIWASIECZKO 2015/01/29	DESCRIPTION REV	QUALITY SYMBOLS	GENERAL TOLERANCES (UNLESS SPECIFIED)	DIMENSION STYLE	SCALE	DESIGN UNITS	THIRD ANGLE PROJECTION	
		=0 =0	mm INCH 4 PLACES ± --- ± --- 3 PLACES ± --- ± --- 2 PLACES ± --- ± --- 1 PLACE ± --- ± --- 0 PLACE ± --- ± ---	MM ONLY	---	METRIC		
			ANGULAR ± 1 °	DRAWN BY DATE	TITLE	CSE M8 XP AC FE STR TPU XM molex		
			DRAFT WHERE APPLICABLE MUST REMAIN WITHIN DIMENSIONS	WSTRASZKIEWI 2014/09/02 JMARSZALEK 2014/09/02 MIWASIECZKO 2014/09/08	SEE TABLE 1 MATERIAL NO.			
					THIS DRAWING CONTAINS INFORMATION THAT IS PROPRIETARY TO MOLEX INCORPORATED AND SHOULD NOT BE USED WITHOUT WRITTEN PERMISSION			

X-ON Electronics

Largest Supplier of Electrical and Electronic Components

Click to view similar products for [Circular MIL Spec Connector](#) category:

Click to view products by [Molex](#) manufacturer:

Other Similar products are found below :

[89075GULPR](#) [0025-262-542](#) [0025-264-3014](#) [58-570121-04S](#) [0134-213-1208](#) [0134-213-2209](#) [0025-258-000](#) [60-042022-07P](#) [60-042022-19P](#)
[60-042022-23P](#) [60-042217-10P](#) [0114-201-1278](#) [012-0467-000](#) [602GB06EG24-61SN](#) [0134-201-1207](#) [0134-213-1006](#) [6104-207-2302](#) [6104-](#)
[208-1902](#) [61-168211-04P](#) [61-168617-10P](#) [6131-202-19149P](#) [6131-204-21149P](#) [6131-208-13149P](#) [6131-209-17149P](#) [6131-210-11149P](#) [6131-](#)
[211-19149P](#) [6131-216-19149P](#) [6131-259-21149P](#) [6131-259-23149P](#) [6131-265-17149P](#) [6131-265-19149P](#) [CS3100A18-1P-472](#) [CS3100A-36-](#)
[77P](#) [CS3101A-16-55P](#) [CS3102A-10SL-55P](#) [CS3102A-14S-58P](#) [CS3102A-32-17P](#) [CS3102A32-25S](#) [CS3102C18-4P-472](#)
[CS3106A10SL3S004](#) [CS3106A-18-73S](#) [CS3108A-14S-52S](#) [CS3108A-28-51S](#) [6162-233-1277](#) [6162-324-1231](#) [M243082296Z](#)
[M2884010AC1S1](#) [CT0-24-10SC](#) [CT0M20-7PCAU](#) [M28840/17AC1G3](#)