

Display Elektronik GmbH

DATA SHEET

STANDARD OLED/PLED

DEP 128096A - W



Product Specification

Version : 0

17.09.2008

GENERAL SPECIFICATION

MODULE NO. :

DEP 128096A - W

CUSTOMER P/N

VERSION NO.	CHANGE DESCRIPTION	DATE
0	ORIGINAL VERSION	17.09.2008

PREPARED BY: MHO

DATE: 17.09.2008

APPROVED BY: MH

DATE: 17.09.2008

CONTENTS

1. GENERAL FEATURES----- 2

2. MECHANICAL DATE----- 2

3. DIMENSIONAL DRAWING----- 3

4. PIN ASSIGNMENT----- 4

5. ELECTRICAL CHARACTERISTICS----- 4

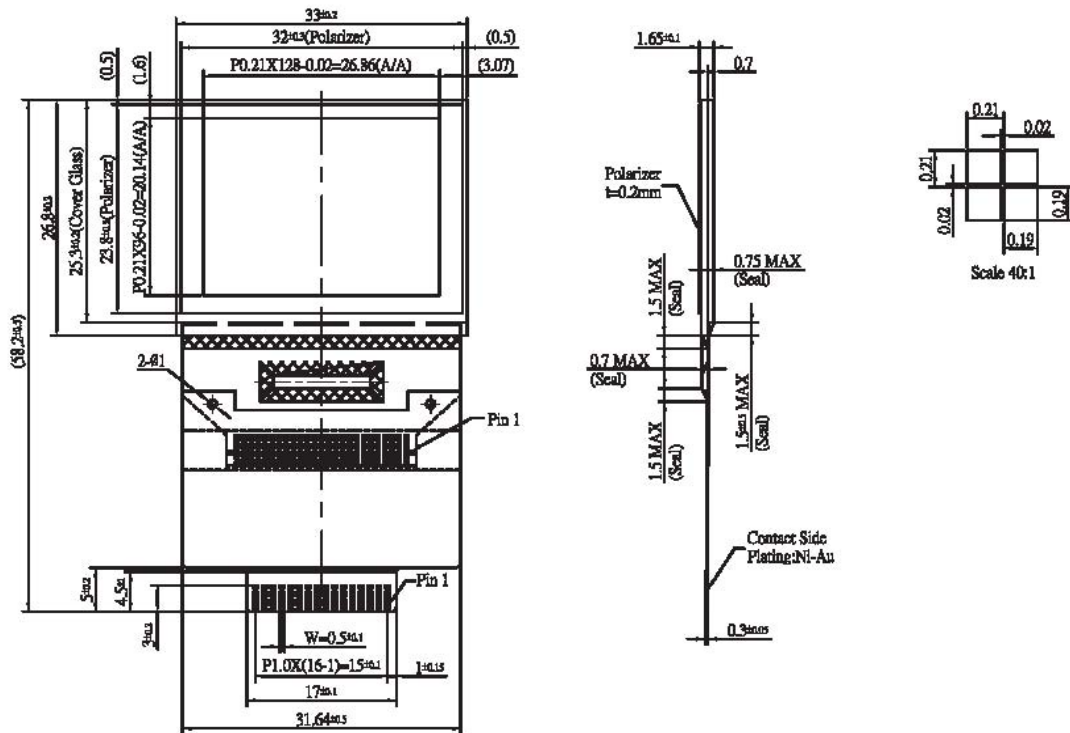
1. GENERAL FEATURES

- Technology: OLED Display
- Resolution: 128 x 96 Dots
- Controller: SSD1329 (Solomon Systech)
- Vdd: 3,3Volt (typ.)
- Duty: 1/96
- Colour: White
- Estimated Lifetime: 16.000 hours (80cd/m²)

2. MECHANICAL DATA

- Outline Dimension: 33.00 x 26.80 mm
- Active-Area: 26.86 x 20.14 mm
- Viewing-Area: 32.00 x 23.80 mm
- Dot-Size: 0.19 x 0.19 mm
- Dot-Gap: 0.02 mm

3. DIMENSIONAL DRAWING



4. PIN ASSIGNMENT

PIN	SYMBOL	FUNCTION
1	Vss	GND
2	Vdd	+3.3Volt (Power Supply)
3	CS	Chip Select
4	/RES	Reset Signal
5	D/C	H: Data L:Command
6	WR	Write Signal
7	RD	Read Signal
8	DB0	Data-Bus
9	DB1	Data-Bus
10	DB2	Data-Bus
11	DB3	Data-Bus
12	DB4	Data-Bus
13	DB5	Data-Bus
14	DB6	Data-Bus
15	DB7	Data-Bus
16	DISPOFF / Vcc	DISPOFF: Active Low Vcc: Supply Voltage for OLED Panel

5. ELECTRICAL CHARACTERISTICS

ITEM	SYMBOL	CONDITION	TYPICAL VALUE	UNIT
Input Voltage	Vdd	Vdd ~ 3.3Volt	3.3	V
Supply Current	Idd	Vdd ~ 3.3Volt	~ 155	mA

X-ON Electronics

Largest Supplier of Electrical and Electronic Components

Click to view similar products for [LED Displays & Accessories](#) category:

Click to view products by [Display Elektronik](#) manufacturer:

Other Similar products are found below :

[LTC-2721WC](#) [LTC-4624JD](#) [LTC-4627G](#) [LTC-4627WC](#) [LTD-5021AWC](#) [LTM-8522G](#) [LTP-4323P](#) [LTP-747G](#) [LTS-3361JG-06](#)
[F416SYGWA/S530-E3](#) [EADST040RA2](#) [1668](#) [HT-F196NB-5323](#) [IPD2131-27](#) [SA03-12EWA](#) [LDD-E2802RD](#) [LDD-E306MI](#) [LDQ-N514RI](#)
[LDS-A3506RD](#) [LDS-A3926RI](#) [LDT-M516RI](#) [SC03-12HDB](#) [SI-B9T151550WW](#) [SI-B9V171550WW](#) [SLC-3PF-WL](#) [1624](#) [LTC-2621JD](#)
[LTC-2623WC](#) [LTC-4624P](#) [LTC-4627JD](#) [LTD-2601E](#) [LTD-322G](#) [LTD-482PC](#) [LTP-1457AKR](#) [LTP-3784G-01](#) [LTS-313AP](#) [LTS-4812SKR-](#)
[P](#) [LTS-547AE](#) [LTS-6780P](#) [446010401-3](#) [HV-7W30-6829](#) [CA12240_MINNIE-WWW-MTG-ASSY](#) [DA43-11GWA](#) [LDD-A516RI-17](#) [LDD-](#)
[E305RI](#) [LDQ-M513RI](#) [LDQ-M5204RI-SI](#) [LDQ-N3402RI](#) [LDQ-N3606RI](#) [LDS-A3924RI-SI](#)