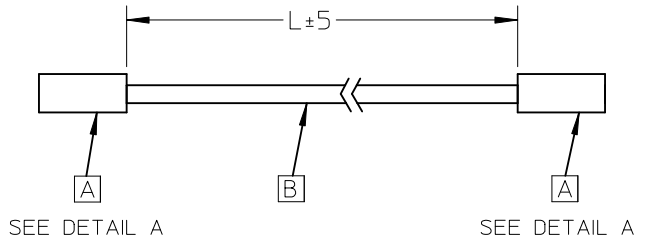


REVISIONS				
EC NO	DATE	REV	DESCRIPTION	CHANGER
	13.11.15	A	INITIAL RELEASE.	Andrew

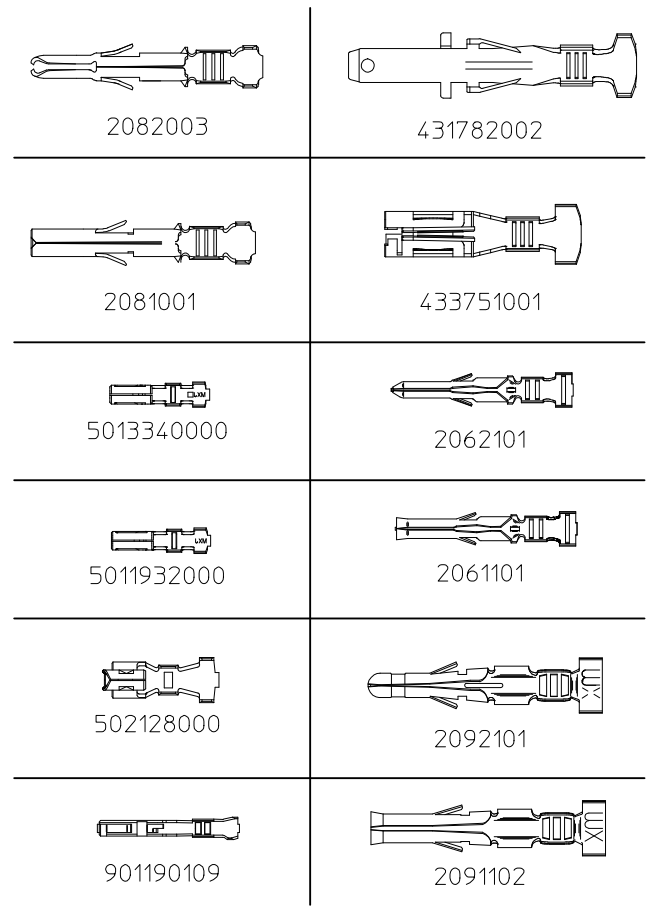
MATERIAL NO.	TITLE	L(mm)	ITEM	DESCRIPTION	Q'TY
688014059	.093" Male 300mm cable	300	A	TERMINAL 14-20AWG 02092101	2
			B	WIRE UL1061 18AWG BLACK	A/R
688014058	.093" Male 150mm cable	150	A	TERMINAL 14-20AWG 02092101	2
			B	WIRE UL1061 18AWG BLACK	A/R
688014061	.093" Female 300mm cable	300	A	TERMINAL 14-20AWG 02091102	2
			B	WIRE UL1061 18AWG BLACK	A/R
688014060	.093" Female 150mm cable	150	A	TERMINAL 14-20AWG 02091102	2
			B	WIRE UL1061 18AWG BLACK	A/R
688014055	.062" Male 300mm cable	300	A	TERMINAL 18-24AWG 02062101	2
			B	WIRE UL1061 22AWG BLACK	A/R
688014054	.062" Male 150mm cable	150	A	TERMINAL 18-24AWG 02062101	2
			B	WIRE UL1061 22AWG BLACK	A/R
688014057	.062" Female 300mm cable	300	A	TERMINAL 18-24AWG 02061101	2
			B	WIRE UL1061 22AWG BLACK	A/R
688014056	.062" Female 150mm cable	150	A	TERMINAL 18-24AWG 02061101	2
			B	WIRE UL1061 22AWG BLACK	A/R
688014037	MLX Male 300mm cable	300	A	TERMINAL 14-20AWG 02082003	2
			B	WIRE UL1061 18AWG BLACK	A/R
688014036	MLX Male 150mm cable	150	A	TERMINAL 14-20AWG 02082003	2
			B	WIRE UL1061 18AWG BLACK	A/R
688014048	C-Grid III Female 150mm cable	150	A	TERMINAL 22-24AWG 901190109	2
			B	WIRE UL1061 22AWG BLACK	A/R
688014049	C-Grid III Female 300mm cable	300	A	TERMINAL 22-24AWG 901190109	2
			B	WIRE UL1061 22AWG BLACK	A/R
688014046	Duraclick Female 150mm cable	150	A	TERMINAL 24-30AWG 502128000	2
			B	WIRE UL1061 26AWG BLACK	A/R
688014047	Duraclick Female 300mm cable	300	A	TERMINAL 24-30AWG 502128000	2
			B	WIRE UL1061 26AWG BLACK	A/R



EC NO: CPG2014-1417 DRWN: JXIA004 CHKD: YXZOU APPR: FNIE 2013/11/17 2013/11/17 2013/11/18	QUALITY SYMBOLS $F_A = 0$ $F_T = 0$ $F_P = 0$	GENERAL TOLERANCES (UNLESS SPECIFIED)		DIMENSION STYLE MM ONLY		SCALE ---	DESIGN UNITS METRIC	THIRD ANGLE PROJECTION			
				mm	INCH	DRAWN BY JXIA004	DATE 2013/11/17	TITLE SEE TABLE			
				± ---	± ---	CHECKED BY YXZOU	DATE 2013/11/17				
				4 PLACES	± ---	± ---	APPROVED BY FNIE	DATE 2013/11/18	molex DOCUMENT NO. SD-68801-115 SHEET NO. 1 OF 2		
				3 PLACES	± ---	± ---	MATERIAL NO. SEE TABLE				
		2 PLACES	± ---	± ---	DRAFT WHERE APPLICABLE MUST REMAIN WITHIN DIMENSIONS						
		1 PLACE	± ---	± ---	SIZE A 4		THIS DRAWING CONTAINS INFORMATION THAT IS PROPRIETARY TO MOLEX INCORPORATED AND SHOULD NOT BE USED WITHOUT WRITTEN PERMISSION				
		0 PLACE	± ---	± ---							

7 6 5 4 3 2 1

MATERIAL NO.	TITLE	L(mm)	ITEM	DESCRIPTION	Q'TY
688014038	MLX Female 150mm cable	150	A	TERMINAL 14-20AWG 02081001	2
			B	WIRE UL1061 18AWG BLACK	A/R
688014039	MLX Female 300mm cable	300	A	TERMINAL 14-20AWG 02081001	2
			B	WIRE UL1061 18AWG BLACK	A/R
688014042	Picoclash Single row 150mm cable	150	A	TERMINAL 28-32AWG 5013340000	2
			B	WIRE UL1061 28AWG BLACK	A/R
688014043	Picoclash Single row 300mm cable	300	A	TERMINAL 28-32AWG 5013340000	2
			B	WIRE UL1061 28AWG BLACK	A/R
688014040	Picoclash Dual row 150mm cable	150	A	TERMINAL 28-32AWG 5011932000	2
			B	WIRE UL1061 28AWG BLACK	A/R
688014041	Picoclash Dual row 300mm cable	300	A	TERMINAL 28-32AWG 5011932000	2
			B	WIRE UL1061 28AWG BLACK	A/R
688014052	Sabre Female 150mm cable	150	A	TERMINAL 14-16AWG 433751001	2
			B	WIRE UL1061 16AWG BLACK	A/R
688014053	Sabre Female 300mm cable	300	A	TERMINAL 14-16AWG 433751001	2
			B	WIRE UL1061 16AWG BLACK	A/R
688014050	Sabre Male 150mm cable	150	A	TERMINAL 14-16AWG 431782002	2
			B	WIRE UL1061 16AWG BLACK	A/R
688014051	Sabre Male 300mm cable	300	A	TERMINAL 14-16AWG 431782002	2
			B	WIRE UL1061 16AWG BLACK	A/R
688014044	Sherlock Female 150mm cable	150	A	TERMINAL 24-30AWG 502128000	2
			B	WIRE UL1061 26AWG BLACK	A/R
688014045	Sherlock Female 300mm cable	300	A	TERMINAL 24-30AWG 502128000	2
			B	WIRE UL1061 26AWG BLACK	A/R



DETAIL A
TERMINAL FIGURE

NOTES
1. THIS PRODUCT MUST MEET EU 2011/65/EU ROHS COMPLIANCE.

EC NO: CPG2014-1417 DRWN: JX1A004 CHKD: YXZOU APPR: FNIE	2013/11/17 2013/11/17 2013/11/18	DESCRIPTION REV	QUALITY SYMBOLS	GENERAL TOLERANCES (UNLESS SPECIFIED)		DIMENSION STYLE MM ONLY		SCALE ---	DESIGN UNITS METRIC	THIRD ANGLE PROJECTION			
			$F_p=0$ $F_c=0$ $F_s=0$	mm INCH	4 PLACES	± ---	± ---	DRAWN BY	DATE	SEE TABLE			
					3 PLACES	± ---	± ---	CHECKED BY	DATE				
					2 PLACES	± ---	± ---	YXZOU	2013/11/17				
					1 PLACE	± ---	± ---	APPROVED BY	DATE				
0 PLACE	± ---	± ---			FNIE	2013/11/18							
A	REV	ANGULAR ± ---°	DRAFT WHERE APPLICABLE MUST REMAIN WITHIN DIMENSIONS		MATERIAL NO. SEE TABLE		DOCUMENT NO. SD-68801-115	SHEET NO. 2 OF 2					
					THIS DRAWING CONTAINS INFORMATION THAT IS PROPRIETARY TO MOLEX INCORPORATED AND SHOULD NOT BE USED WITHOUT WRITTEN PERMISSION								

6 5 4 3 2 1

X-ON Electronics

Largest Supplier of Electrical and Electronic Components

Click to view similar products for [I/O Connectors](#) category:

Click to view products by [Molex](#) manufacturer:

Other Similar products are found below :

[571763P](#) [58098-0628](#) [D38999/20FJ24PA L/C](#) [D38999/20FJ29SB L/C](#) [D38999/24FG11SN L/C](#) [72.250.1628.2](#) [72.250.2428.2](#) [74720-0505](#)
[747680210](#) [76.350.0729.0](#) [76871-1403](#) [FCN-244F080-G/1](#) [FCN-260A9920](#) [FCN-268D024-G/11](#) [FCN-268D024-G/2F#10X-R10](#) [MP-](#)
[5T180MUNNA-005](#) [MP-5XRJ45UNNB-003](#) [PCR-E36PM](#) [PCS-E50FA](#) [PCS-XE26LKA](#) [PCS-XE26MA+](#) [PCS-XES68MS+](#) [G38A71314B](#) [91-](#)
[569719-35R](#) [DX40-50P\(55\)](#) [1571250010](#) [157-22500-3](#) [MS3471L14-19P L/C](#) [MS3476W12-10S L/C](#) [171224-6031](#) [1888020-8](#) [91-569719-35P](#) [91-](#)
[569786-35H](#) [91-569786-35M](#) [91-644626-35P](#) [172501-4002](#) [172501-6002](#) [FCN-260C008-A/L0](#) [FCN-260C024-AL0](#) [FCN-261Z008](#) [FCN-264D024-](#)
[G2K](#) [FCN-268D008-G/1K](#) [2000314-1](#) [200331-1](#) [2007498-2](#) [PCR-E28LMDAG1+](#) [PCR-E36FC+](#) [PCS-E28FS+](#) [PCS-XE26SLFD+](#) [PCS-](#)
[XE26SLFDT+](#)