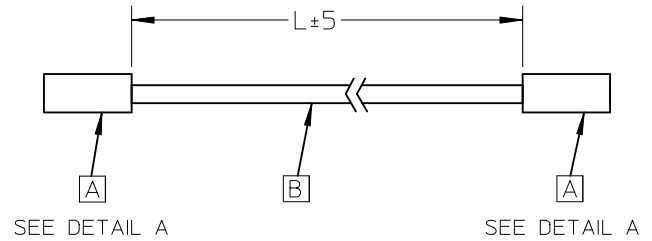


| REVISIONS | | | | |
|-----------|----------|-----|------------------|---------|
| EC NO | DATE | REV | DESCRIPTION | CHANGER |
| | 13.11.15 | A | INITIAL RELEASE. | Andrew |

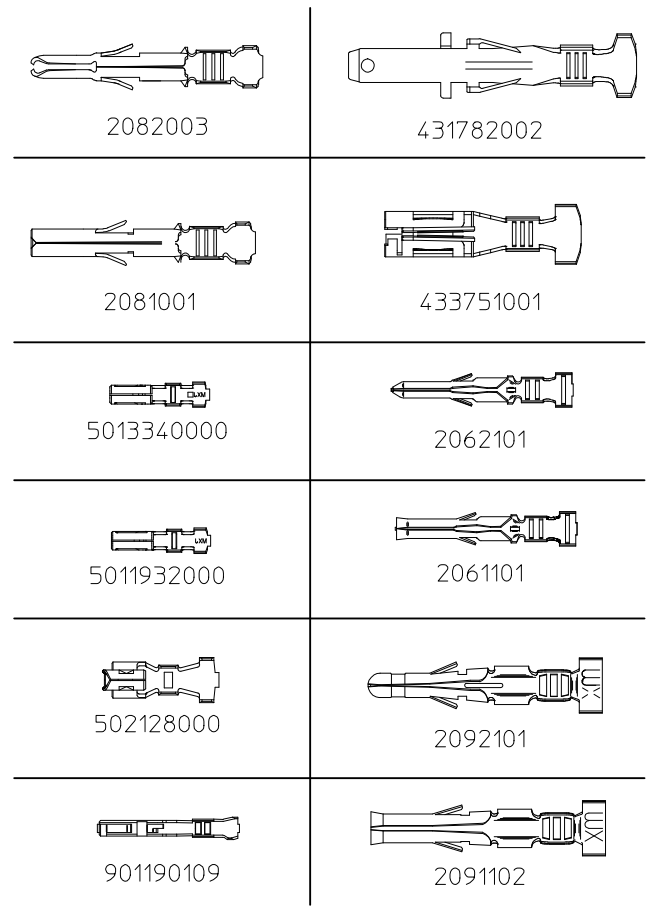
| MATERIAL NO. | TITLE | L(mm) | ITEM | DESCRIPTION | Q'TY |
|--------------|-------------------------------|-------|------|-----------------------------|------|
| 688014059 | .093" Male 300mm cable | 300 | A | TERMINAL 14-20AWG 02092101 | 2 |
| | | | B | WIRE UL1061 18AWG BLACK | A/R |
| 688014058 | .093" Male 150mm cable | 150 | A | TERMINAL 14-20AWG 02092101 | 2 |
| | | | B | WIRE UL1061 18AWG BLACK | A/R |
| 688014061 | .093" Female 300mm cable | 300 | A | TERMINAL 14-20AWG 02091102 | 2 |
| | | | B | WIRE UL1061 18AWG BLACK | A/R |
| 688014060 | .093" Female 150mm cable | 150 | A | TERMINAL 14-20AWG 02091102 | 2 |
| | | | B | WIRE UL1061 18AWG BLACK | A/R |
| 688014055 | .062" Male 300mm cable | 300 | A | TERMINAL 18-24AWG 02062101 | 2 |
| | | | B | WIRE UL1061 22AWG BLACK | A/R |
| 688014054 | .062" Male 150mm cable | 150 | A | TERMINAL 18-24AWG 02062101 | 2 |
| | | | B | WIRE UL1061 22AWG BLACK | A/R |
| 688014057 | .062" Female 300mm cable | 300 | A | TERMINAL 18-24AWG 02061101 | 2 |
| | | | B | WIRE UL1061 22AWG BLACK | A/R |
| 688014056 | .062" Female 150mm cable | 150 | A | TERMINAL 18-24AWG 02061101 | 2 |
| | | | B | WIRE UL1061 22AWG BLACK | A/R |
| 688014037 | MLX Male 300mm cable | 300 | A | TERMINAL 14-20AWG 02082003 | 2 |
| | | | B | WIRE UL1061 18AWG BLACK | A/R |
| 688014036 | MLX Male 150mm cable | 150 | A | TERMINAL 14-20AWG 02082003 | 2 |
| | | | B | WIRE UL1061 18AWG BLACK | A/R |
| 688014048 | C-Grid III Female 150mm cable | 150 | A | TERMINAL 22-24AWG 901190109 | 2 |
| | | | B | WIRE UL1061 22AWG BLACK | A/R |
| 688014049 | C-Grid III Female 300mm cable | 300 | A | TERMINAL 22-24AWG 901190109 | 2 |
| | | | B | WIRE UL1061 22AWG BLACK | A/R |
| 688014046 | Duraclick Female 150mm cable | 150 | A | TERMINAL 24-30AWG 502128000 | 2 |
| | | | B | WIRE UL1061 26AWG BLACK | A/R |
| 688014047 | Duraclick Female 300mm cable | 300 | A | TERMINAL 24-30AWG 502128000 | 2 |
| | | | B | WIRE UL1061 26AWG BLACK | A/R |



| | | | | | | | | | |
|---|--|--|--|---|--------------------|---------------------------|------------------------------|------------------------|--|
| EC NO: CPG2014-1417 DRWN: JXIA004 CHKD: YXZOU APPR: FNIE 2013/11/17 2013/11/17 2013/11/18 | QUALITY SYMBOLS $F_A = 0$ $F_T = 0$ $F_P = 0$ | GENERAL TOLERANCES (UNLESS SPECIFIED) | | DIMENSION STYLE MM ONLY | | SCALE --- | DESIGN UNITS METRIC | THIRD ANGLE PROJECTION | |
| | | | | DRAWN BY JXIA004 | DATE 2013/11/17 | TITLE SEE TABLE | | | |
| | | | | CHECKED BY YXZOU | DATE 2013/11/17 | | | | |
| | | | | APPROVED BY FNIE | DATE 2013/11/18 | | | | |
| | | | | ANGULAR \pm --- ° | | MATERIAL NO. SEE TABLE | DOCUMENT NO. SD-68801-115 | SHEET NO. 1 OF 2 | |
| A | REV | DRAFT WHERE APPLICABLE MUST REMAIN WITHIN DIMENSIONS | | THIS DRAWING CONTAINS INFORMATION THAT IS PROPRIETARY TO MOLEX INCORPORATED AND SHOULD NOT BE USED WITHOUT WRITTEN PERMISSION | | | | | |

7 6 5 4 3 2 1

| MATERIAL NO. | TITLE | L(mm) | ITEM | DESCRIPTION | Q'TY |
|--------------|----------------------------------|-------|------|------------------------------|------|
| 688014038 | MLX Female 150mm cable | 150 | A | TERMINAL 14-20AWG 02081001 | 2 |
| | | | B | WIRE UL1061 18AWG BLACK | A/R |
| 688014039 | MLX Female 300mm cable | 300 | A | TERMINAL 14-20AWG 02081001 | 2 |
| | | | B | WIRE UL1061 18AWG BLACK | A/R |
| 688014042 | Picoclash Single row 150mm cable | 150 | A | TERMINAL 28-32AWG 5013340000 | 2 |
| | | | B | WIRE UL1061 28AWG BLACK | A/R |
| 688014043 | Picoclash Single row 300mm cable | 300 | A | TERMINAL 28-32AWG 5013340000 | 2 |
| | | | B | WIRE UL1061 28AWG BLACK | A/R |
| 688014040 | Picoclash Dual row 150mm cable | 150 | A | TERMINAL 28-32AWG 5011932000 | 2 |
| | | | B | WIRE UL1061 28AWG BLACK | A/R |
| 688014041 | Picoclash Dual row 300mm cable | 300 | A | TERMINAL 28-32AWG 5011932000 | 2 |
| | | | B | WIRE UL1061 28AWG BLACK | A/R |
| 688014052 | Sabre Female 150mm cable | 150 | A | TERMINAL 14-16AWG 433751001 | 2 |
| | | | B | WIRE UL1061 16AWG BLACK | A/R |
| 688014053 | Sabre Female 300mm cable | 300 | A | TERMINAL 14-16AWG 433751001 | 2 |
| | | | B | WIRE UL1061 16AWG BLACK | A/R |
| 688014050 | Sabre Male 150mm cable | 150 | A | TERMINAL 14-16AWG 431782002 | 2 |
| | | | B | WIRE UL1061 16AWG BLACK | A/R |
| 688014051 | Sabre Male 300mm cable | 300 | A | TERMINAL 14-16AWG 431782002 | 2 |
| | | | B | WIRE UL1061 16AWG BLACK | A/R |
| 688014044 | Sherlock Female 150mm cable | 150 | A | TERMINAL 24-30AWG 502128000 | 2 |
| | | | B | WIRE UL1061 26AWG BLACK | A/R |
| 688014045 | Sherlock Female 300mm cable | 300 | A | TERMINAL 24-30AWG 502128000 | 2 |
| | | | B | WIRE UL1061 26AWG BLACK | A/R |



DETAIL A
TERMINAL FIGURE

NOTES
1. THIS PRODUCT MUST MEET EU 2011/65/EU ROHS COMPLIANCE.

| | | | | | | | | | | | | | |
|---|--|--------------------|--|---------------------------------------|---|----------------------------|---------------------------|---------------------|------------------------------|------------------------|--|--|--|
| EC NO: CPG2014-1417 DRWN: JX1A004 CHKD: YXZOU APPR: FNIE | 2013/11/17 2013/11/17 2013/11/18 | DESCRIPTION REV | QUALITY SYMBOLS | GENERAL TOLERANCES (UNLESS SPECIFIED) | | DIMENSION STYLE MM ONLY | | SCALE --- | DESIGN UNITS METRIC | THIRD ANGLE PROJECTION | | | |
| | | | $F_p=0$ $F_p=0$ $F_p=0$ | | | mm | INCH | DRAWN BY JX1A004 | DATE 2013/11/17 | SEE TABLE | | | |
| | | | | 4 PLACES | ± --- | ± --- | CHECKED BY YXZOU | DATE 2013/11/17 | | | | | |
| | | | | 3 PLACES | ± --- | ± --- | APPROVED BY FNIE | DATE 2013/11/18 | | | | | |
| | | | | 2 PLACES | ± --- | ± --- | MATERIAL NO. SEE TABLE | | DOCUMENT NO. SD-68801-115 | SHEET NO. 2 OF 2 | | | |
| 1 PLACE | ± --- | ± --- | ANGULAR ± ---° | | THIS DRAWING CONTAINS INFORMATION THAT IS PROPRIETARY TO MOLEX INCORPORATED AND SHOULD NOT BE USED WITHOUT WRITTEN PERMISSION | | | | | | | | |
| 0 PLACE | ± --- | ± --- | DRAFT WHERE APPLICABLE MUST REMAIN WITHIN DIMENSIONS | | | | | | | | | | |

6 5 4 3 2 1

X-ON Electronics

Largest Supplier of Electrical and Electronic Components

Click to view similar products for [Lighting Cables](#) category:

Click to view products by [Molex](#) manufacturer:

Other Similar products are found below :

[CT6100](#) [ZWF-915-J](#) [68801-4899](#) [68801-4124](#) [68801-4752](#) [68801-4850](#) [68801-4874](#) [1-2058943-7](#) [1-2058943-8](#) [1-2083029-6](#) [1-2083031-6](#) [1-2083032-6](#) [1-2083075-2](#) [1-2083080-1](#) [2-2083073-3](#) [2-2083074-3](#) [2-2083075-3](#) [2-2083030-6](#) [2702306](#) [2702307](#) [SSL12-J2LJ0-020H01](#) [68801-4648](#) [2-2083032-2](#) [1-2083076-3](#) [SSL11-J6LJ0-022A04](#) [9-2834003-1](#) [1-2083029-2](#) [2-2083077-2](#) [2-2083032-6](#) [SSL12-J4FJ0-000001](#) [SSL12-P2LP0-M20H01](#) [1705132](#) [4945](#) [180888-0405](#) [SSL11-J6LJ0-B22A04](#) [180887-0405](#) [180888-0430](#) [SSL12-J4LJ0-020A04](#) [180887-0430](#) [1705131](#) [180887-0410](#) [180778-0405](#) [1-2083029-8](#) [SSL12-J4LJ0-020H01](#) [180778-0430](#) [180778-0410](#) [SSL12-P4LP0-M20H01](#) [SSL12-P4LP0-M20F01](#) [SSL12-J4LJ0-020F01](#) [SSL11-J2LJ0-B22A04](#)