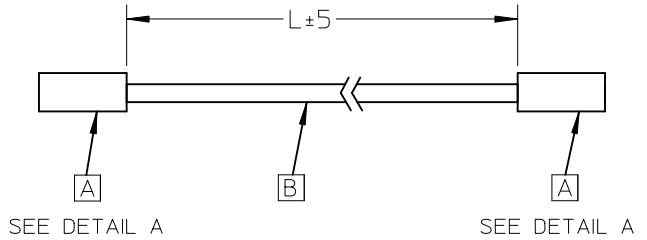


REVISIONS				
EC NO	DATE	REV	DESCRIPTION	CHANGER
	13.11.15	A	INITIAL RELEASE.	Andrew

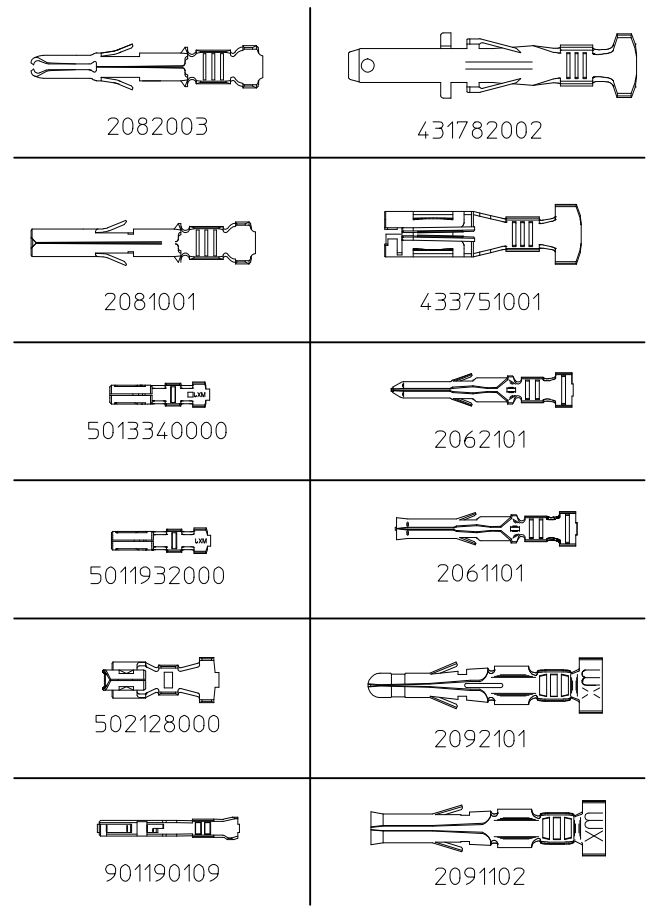
MATERIAL NO.	TITLE	L(mm)	ITEM	DESCRIPTION	Q'TY
688014059	.093" Male 300mm cable	300	A	TERMINAL 14-20AWG 02092101	2
			B	WIRE UL1061 18AWG BLACK	A/R
688014058	.093" Male 150mm cable	150	A	TERMINAL 14-20AWG 02092101	2
			B	WIRE UL1061 18AWG BLACK	A/R
688014061	.093" Female 300mm cable	300	A	TERMINAL 14-20AWG 02091102	2
			B	WIRE UL1061 18AWG BLACK	A/R
688014060	.093" Female 150mm cable	150	A	TERMINAL 14-20AWG 02091102	2
			B	WIRE UL1061 18AWG BLACK	A/R
688014055	.062" Male 300mm cable	300	A	TERMINAL 18-24AWG 02062101	2
			B	WIRE UL1061 22AWG BLACK	A/R
688014054	.062" Male 150mm cable	150	A	TERMINAL 18-24AWG 02062101	2
			B	WIRE UL1061 22AWG BLACK	A/R
688014057	.062" Female 300mm cable	300	A	TERMINAL 18-24AWG 02061101	2
			B	WIRE UL1061 22AWG BLACK	A/R
688014056	.062" Female 150mm cable	150	A	TERMINAL 18-24AWG 02061101	2
			B	WIRE UL1061 22AWG BLACK	A/R
688014037	MLX Male 300mm cable	300	A	TERMINAL 14-20AWG 02082003	2
			B	WIRE UL1061 18AWG BLACK	A/R
688014036	MLX Male 150mm cable	150	A	TERMINAL 14-20AWG 02082003	2
			B	WIRE UL1061 18AWG BLACK	A/R
688014048	C-Grid III Female 150mm cable	150	A	TERMINAL 22-24AWG 901190109	2
			B	WIRE UL1061 22AWG BLACK	A/R
688014049	C-Grid III Female 300mm cable	300	A	TERMINAL 22-24AWG 901190109	2
			B	WIRE UL1061 22AWG BLACK	A/R
688014046	Duraclick Female 150mm cable	150	A	TERMINAL 24-30AWG 502128000	2
			B	WIRE UL1061 26AWG BLACK	A/R
688014047	Duraclick Female 300mm cable	300	A	TERMINAL 24-30AWG 502128000	2
			B	WIRE UL1061 26AWG BLACK	A/R



EC NO: CPG2014-1417 DRWN: JXIA004 CHKD: YXZOU APPR: FNIE 2013/11/17 2013/11/17 2013/11/18	QUALITY SYMBOLS $F_A = 0$ $F_T = 0$ $F_P = 0$	GENERAL TOLERANCES (UNLESS SPECIFIED)		DIMENSION STYLE MM ONLY		SCALE ---	DESIGN UNITS METRIC	THIRD ANGLE PROJECTION	
				DRAWN BY JXIA004	DATE 2013/11/17	TITLE SEE TABLE			
				CHECKED BY YXZOU	DATE 2013/11/17				
				APPROVED BY FNIE	DATE 2013/11/18				
				ANGULAR \pm ---°		MATERIAL NO. SEE TABLE	DOCUMENT NO. SD-68801-115	SHEET NO. 1 OF 2	
DRAFT WHERE APPLICABLE MUST REMAIN WITHIN DIMENSIONS		THIS DRAWING CONTAINS INFORMATION THAT IS PROPRIETARY TO MOLEX INCORPORATED AND SHOULD NOT BE USED WITHOUT WRITTEN PERMISSION							

7 6 5 4 3 2 1

MATERIAL NO.	TITLE	L(mm)	ITEM	DESCRIPTION	Q'TY
688014038	MLX Female 150mm cable	150	A	TERMINAL 14-20AWG 02081001	2
			B	WIRE UL1061 18AWG BLACK	A/R
688014039	MLX Female 300mm cable	300	A	TERMINAL 14-20AWG 02081001	2
			B	WIRE UL1061 18AWG BLACK	A/R
688014042	Picoclash Single row 150mm cable	150	A	TERMINAL 28-32AWG 5013340000	2
			B	WIRE UL1061 28AWG BLACK	A/R
688014043	Picoclash Single row 300mm cable	300	A	TERMINAL 28-32AWG 5013340000	2
			B	WIRE UL1061 28AWG BLACK	A/R
688014040	Picoclash Dual row 150mm cable	150	A	TERMINAL 28-32AWG 5011932000	2
			B	WIRE UL1061 28AWG BLACK	A/R
688014041	Picoclash Dual row 300mm cable	300	A	TERMINAL 28-32AWG 5011932000	2
			B	WIRE UL1061 28AWG BLACK	A/R
688014052	Sabre Female 150mm cable	150	A	TERMINAL 14-16AWG 433751001	2
			B	WIRE UL1061 16AWG BLACK	A/R
688014053	Sabre Female 300mm cable	300	A	TERMINAL 14-16AWG 433751001	2
			B	WIRE UL1061 16AWG BLACK	A/R
688014050	Sabre Male 150mm cable	150	A	TERMINAL 14-16AWG 431782002	2
			B	WIRE UL1061 16AWG BLACK	A/R
688014051	Sabre Male 300mm cable	300	A	TERMINAL 14-16AWG 431782002	2
			B	WIRE UL1061 16AWG BLACK	A/R
688014044	Sherlock Female 150mm cable	150	A	TERMINAL 24-30AWG 502128000	2
			B	WIRE UL1061 26AWG BLACK	A/R
688014045	Sherlock Female 300mm cable	300	A	TERMINAL 24-30AWG 502128000	2
			B	WIRE UL1061 26AWG BLACK	A/R



DETAIL A
TERMINAL FIGURE

NOTES
1. THIS PRODUCT MUST MEET EU 2011/65/EU ROHS COMPLIANCE.

EC NO: CPG2014-1417 DRWN: JX1A004 CHKD: YXZOU APPR: FNIE	2013/11/17 2013/11/17 2013/11/18	DESCRIPTION REV	QUALITY SYMBOLS	GENERAL TOLERANCES (UNLESS SPECIFIED)		DIMENSION STYLE MM ONLY		SCALE ---	DESIGN UNITS METRIC	THIRD ANGLE PROJECTION			
			$F_p=0$ $F_p=0$ $F_p=0$	mm INCH	4 PLACES	± ---	± ---	DRAWN BY	DATE	SEE TABLE			
					3 PLACES	± ---	± ---	CHECKED BY	DATE				
					2 PLACES	± ---	± ---	YXZOU	2013/11/17				
					1 PLACE	± ---	± ---	APPROVED BY	DATE				
0 PLACE	± ---	± ---			FNIE	2013/11/18							
A	REV	ANGULAR ± ---°	DRAFT WHERE APPLICABLE MUST REMAIN WITHIN DIMENSIONS		MATERIAL NO. SEE TABLE		DOCUMENT NO. SD-68801-115	SHEET NO. 2 OF 2					
					THIS DRAWING CONTAINS INFORMATION THAT IS PROPRIETARY TO MOLEX INCORPORATED AND SHOULD NOT BE USED WITHOUT WRITTEN PERMISSION								

6 5 4 3 2 1

X-ON Electronics

Largest Supplier of Electrical and Electronic Components

Click to view similar products for [Lighting Cables](#) category:

Click to view products by [Molex](#) manufacturer:

Other Similar products are found below :

[CT6100](#) [ZWF-915-J](#) [68801-4899](#) [68801-4124](#) [68801-4752](#) [68801-4850](#) [68801-4874](#) [1-2058943-7](#) [1-2058943-8](#) [1-2083029-6](#) [1-2083031-6](#) [1-2083032-6](#) [1-2083075-2](#) [1-2083080-1](#) [2-2083073-3](#) [2-2083074-3](#) [2-2083075-3](#) [2-2083030-6](#) [2702306](#) [2702307](#) [SSL12-J2LJ0-020H01](#) [68801-4648](#) [2-2083032-2](#) [1-2083076-3](#) [SSL11-J6LJ0-022A04](#) [9-2834003-1](#) [1-2083029-2](#) [2-2083077-2](#) [2-2083032-6](#) [SSL12-J4FJ0-000001](#) [SSL12-P2LP0-M20H01](#) [1705132](#) [4945](#) [180888-0405](#) [SSL11-J6LJ0-B22A04](#) [180887-0405](#) [180888-0430](#) [SSL12-J4LJ0-020A04](#) [180887-0430](#) [1705131](#) [180887-0410](#) [180778-0405](#) [1-2083029-8](#) [SSL12-J4LJ0-020H01](#) [180778-0430](#) [180778-0410](#) [SSL12-P4LP0-M20H01](#) [SSL12-P4LP0-M20F01](#) [SSL12-J4LJ0-020F01](#) [SSL11-J2LJ0-B22A04](#)