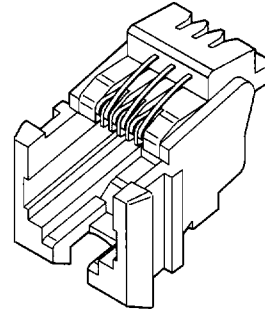


**90133
Low Profile
IDT**



FEATURES AND SPECIFICATIONS

Features and Benefits

- 1-piece construction
- Low profile—recommended for applications in handsets
- Front part may be adapted to customer specifications
- Active part of contact Gold-plated Tin in IDT area
- Available in loose or strip form for high-volume applications
- Uses insulation displacement technology for mass termination

Reference Information

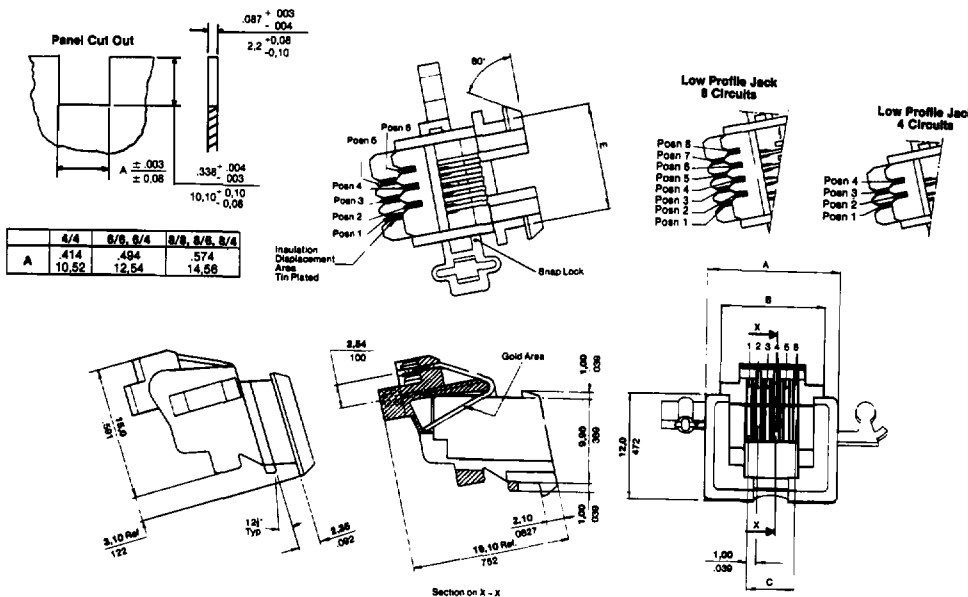
Product Specification: PSX90133-E
 Packaging: Strip mounted or loose piece
 Mates With: FCC 68 plugs
 Designed In: Millimeters

Electrical

Voltage: 125V
 Current: 1.5A
 Contact Resistance: 20mΩ max.
 Dielectric Withstanding Voltage: 1000V
 Insulation Resistance: 500 MΩ min.

Physical

Housing: Black polyester, UL 94V-0
 Contact: Phosphor Bronze
 Plating: See Table
 Temperature: -55 to +105°C
 Wire: Intended to terminate 26 AWG stranded topcoated wire and solid wire or 24 AWG stranded wire



ORDERING INFORMATION AND DIMENSIONS

Circuits	Loaded Contacts	Order No.		Dimension			
		Strip Mounted	Loose Piece	A	B	C	E
4	4	90133-0001	90133-7001	13.15 (.518)	10.20 (.402)	3.05 (.120)	10.35 (.407)
6	6	90133-0002	90133-7002	15.20 (.600)	12.20 (.480)	5.08 (.200)	12.35 (.486)
6	4	90133-0003	90133-7003	15.20 (.600)	12.20 (.480)	5.08 (.200)	12.35 (.486)
6	2	90133-0004	90133-7004	15.20 (.600)	12.20 (.480)	5.08 (.200)	12.35 (.486)
8	8	90133-0006	90133-7006	17.22 (.678)	14.22 (.560)	7.11 (.280)	14.38 (.566)

Plating: ID area plated with 1.27µm (50µ") min. electro Tin over 1.27µm (50µ") min. Nickel overall. Area of contact with retainer 1.27µm (50µ") min. Gold in contact area over 1.27µm (50µ") min. Nickel overall.



X-ON Electronics

Largest Supplier of Electrical and Electronic Components

Click to view similar products for [Modular Connectors](#) / [Ethernet Connectors](#) *category:*

Click to view products by [Molex](#) *manufacturer:*

Other Similar products are found below :

[RJE231881317T](#) [MP1010RX-1000](#) [MP44RX-1000](#) [GAX-3-66](#) [GAX-8-62](#) [93606-0253](#) [GD-A-44](#) [GDCX-PN-64](#) [GDCX-PN-66](#) [GDCX-PN-66-50](#)
[GDLX-A-66](#) [GDLX-A-88](#) [GDLX-N-66](#) [GDLX-S-66](#) [GDLX-S-88K](#) [GDTX-S-88-50](#) [GDX-PA-1010](#) [GLX-A-44](#) [GLX-N-1010M-BLK](#) [GLX-N-44M](#)
[GLX-S-88M-BLK](#) [GMX-N-1010](#) [GMX-S-1010](#) [GMX-SMT2-N-1010](#) [GMX-SMT2-N-64-50](#) [GMX-SMT2-S6-88](#) [GMX-SMT4-N-88](#) [GPX-2-64](#)
[GRT1-BT1-5](#) [GSGX-N-2-88](#) [GSX-NS2-88-3.05](#) [GSX-NS2-88-3.05-50](#) [GSX-NS-88-3.05-30](#) [GSX-NS-88-3.05-50](#) [GSX-NS-88-3.68](#) [1-1775629-2](#)
[GWLX-S-88-GR](#) [GWLX-S9-88-YG](#) [1300500326](#) [1300500227](#) [1300530003](#) [1300570002](#) [1324640-4](#) [RJ11FTVC2G](#) [RJ11FTVC2N](#) [RJFTVX2SA1G](#)
[1400000](#) [1413176](#) [1413235](#) [MP88X-1000](#)