

NEF 1-3



M 3



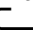

"...5"





8

Interference filter
Housing width 25
Enclosed housing

	(IEC)	rigid	flexible	
	[mm ²]	solid	stranded	AWG
Connection data		0.2-4	0.2-2.5	24-12

Description	Nom.current [A]	Type	Order No.	Pcs. Pkt.
Interference filter with universal foot for mounting on  or 	3	NEF 1-3	27 94 11 0	10

Technical data

Tested:	acc. to EN133 200: 1994/DIN EN 133 200/VDE 0565 p. 3-1: 1996-06	
Nominal voltage U_N :	230 V AC	
Max. rated voltage U_C :	250 V AC	
Nominal current I_N (with 40 °C):	3 A	
Discharge current to PE with U_N :	≤ 0.5 mA	
Input attenuation (50 Ω)	normal/common	≥ 55 dB/≥ 35 dB (1 MHz)
Inductance per path 1-3/2-4:	2.7 mH/2.7 mH	
Discharge resistance:	1 MΩ	
Max. required back-up fuse:	3 A	
Temperature range:	- 25 °C to + 85 °C (HPF)	
Protection type acc. to IEC 529/ EN 60 529:	IP 20	
Approvals:	 	

Type of housing

Polyamide PA non-reinforced, see [product-line info](#)

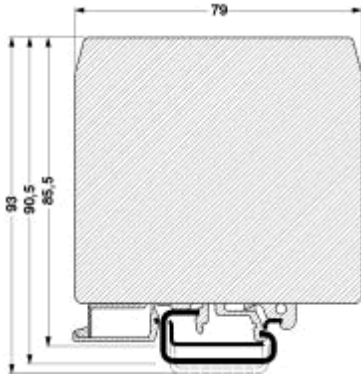
color: black

Torque value of terminals, see [product-line info](#)

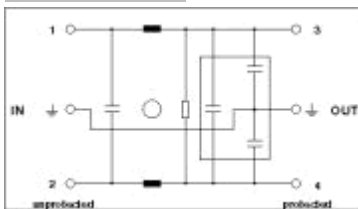
Marking systems and mounting material, see catalog part 3/4.

The rated cross section refers to untreated conductors without ferrules, see [product-line info](#)

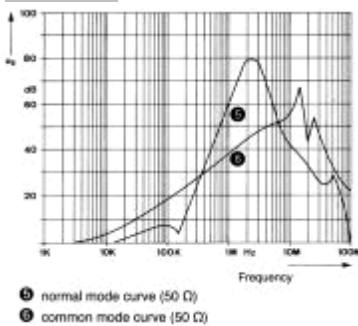
Dimensional drawing



Block diagram



Diagram



X-ON Electronics

Largest Supplier of Electrical and Electronic Components

Click to view similar products for [Fixed Inductors](#) category:

Click to view products by [Phoenix Contact](#) manufacturer:

Other Similar products are found below :

[MLZ1608M6R8WTD25](#) [MLZ1608N6R8LT000](#) [MLZ1608N3R3LTD25](#) [MLZ1608N3R3LT000](#) [MLZ1608N150LT000](#)

[MLZ1608M150WTD25](#) [MLZ1608M3R3WTD25](#) [MLZ1608M3R3WT000](#) [MLZ1608M150WT000](#) [MLZ1608A1R5WT000](#)

[MLZ1608N1R5LT000](#) [B82432C1333K000](#) [PCMB053T-1R0MS](#) [PCMB053T-1R5MS](#) [PCMB104T-1R5MS](#) [CR32NP-100KC](#) [CR32NP-](#)

[151KC](#) [CR32NP-180KC](#) [CR32NP-181KC](#) [CR32NP-1R5MC](#) [CR32NP-390KC](#) [CR32NP-3R9MC](#) [CR32NP-680KC](#) [CR32NP-820KC](#)

[CR32NP-8R2MC](#) [CR43NP-390KC](#) [CR43NP-560KC](#) [CR43NP-680KC](#) [CR54NP-181KC](#) [CR54NP-470LC](#) [CR54NP-820KC](#) [CR54NP-8R5MC](#)

[MGDQ4-00004-P](#) [MGDU1-00016-P](#) [MHL1ECTTP18NJ](#) [MHL1JCTTD12NJ](#) [PE-51506NL](#) [PE-53601NL](#) [PE-53630NL](#) [PE-53824SNLT](#) [PE-](#)

[62892NL](#) [PE-92100NL](#) [PG0434.801NLT](#) [PG0936.113NLT](#) [PM06-2N7](#) [PM06-39NJ](#) [HC2LP-R47-R](#) [HC2-R47-R](#) [HC3-2R2-R](#) [HC8-1R2-R](#)