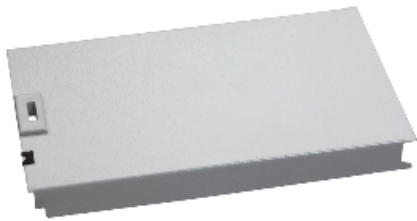




Price\* : 8.07 GBP



## Main


|                                    |   |
|------------------------------------|---|
| Range                              | Spacial   |
| Accessory / separate part category | Enclosure accessory                               |
| Product or component type          | Cover plate                                       |
| Application                        | Multi-purpose<br>Modular distribution application |
| Range compatibility                | Spacial CRN<br>Spacial S3D<br>Spacial S3X         |
| For enclosure nominal dimensions   | H: -  |
| Mounting location                  | On DLM chassis                                    |
| Device composition                 | 2 panel   |
| Quantity per set                   | Set of 1  |

## Complementary

|                     |                            |
|---------------------|----------------------------|
| Material            | Steel                      |
| Colour              | Grey RAL 7035              |
| Surface finish      | Polyester powder           |
| Fixing mode         | Clipped                    |
| Type of front plate | Plain                      |
| Height              | Nominal : 150 mm           |
| Width               | Nominal : 300 mm<br>254 mm |

## Offer Sustainability

|                          |   |
|--------------------------|---|
| Sustainable offer status | Green Premium product   |
| RoHS (date code: YYWW)   | Compliant - since 0940 - Schneider Electric declaration of conformity<br><a href="#">Schneider Electric declaration of conformity</a> |

|                                  |  |
|----------------------------------|--|
| REACH                            | Reference not containing SVHC above the threshold<br>Reference not containing SVHC above the threshold                       |
| Product environmental profile    | Available<br> Product Environmental Profile |
| Product end of life instructions | Need no specific recycling operations  |
| <b>Contractual warranty</b>      |  |
| Warranty period                  | 18 months  |

## X-ON Electronics

Largest Supplier of Electrical and Electronic Components

*Click to view similar products for [Electrical Enclosures](#) category:*

*Click to view products by [Schneider](#) manufacturer:*

Other Similar products are found below :

[120-902](#) [120-905](#) [120-403](#) [120-475](#) [120-901](#) [127-410](#) [130-007](#) [130-504](#) [130-506](#) [MR-25L+](#) [30-8739](#) [PIP-11774SCREW](#) [30-9715](#) [MR-25LW+](#) [110-407](#) [111-004](#) [111-008](#) [110-402](#) [110-901](#) [110-907](#) [111-002](#) [110-406](#) [110-910](#) [110-404](#) [110-409](#) [110-410](#) [120-405](#) [106-009](#) [106-505](#) [105-401](#) [106-006](#) [104-406](#) [137-002](#) [105-405](#) [111-005](#) [127-909](#) [106-502](#) [130-475](#) [130-503](#) [127-401](#) [106-010](#) [127-455](#) [127-475](#) [110-903](#) [R260-180-300](#) [9511020](#) [9822029](#) [9820014](#) [P61603000P](#) [9823009](#)