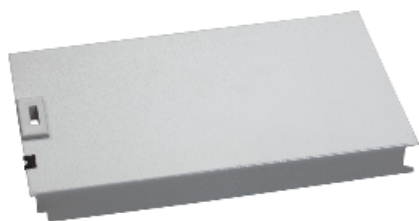




Price* : 12.38 GBP



Main


Range	Spacial
Accessory / separate part category	Enclosure accessory
Product or component type	Cover plate
Application	Multi-purpose Modular distribution application
Range compatibility	Spacial CRN Spacial S3D Spacial S3X
For enclosure nominal dimensions	H: -
Mounting location	On DLM chassis
Device composition	2 panel
Quantity per set	Set of 1

Complementary

Material	Steel
Colour	Grey RAL 7035
Surface finish	Polyester powder
Fixing mode	Clipped
Type of front plate	Plain
Height	Nominal : 150 mm
Width	Nominal : 400 mm 354 mm

Offer Sustainability

Sustainable offer status	Green Premium product
RoHS (date code: YYWW)	Compliant - since 0940 - Schneider Electric declaration of conformity Schneider Electric declaration of conformity

REACH	Reference not containing SVHC above the threshold Reference not containing SVHC above the threshold
Product environmental profile	Available  Product Environmental Profile
Product end of life instructions	Need no specific recycling operations
Contractual warranty	
Warranty period	18 months

X-ON Electronics

Largest Supplier of Electrical and Electronic Components

Click to view similar products for [Electrical Enclosures](#) category:

Click to view products by [Schneider](#) manufacturer:

Other Similar products are found below :

[120-902](#) [120-905](#) [120-403](#) [120-475](#) [120-901](#) [127-410](#) [130-007](#) [130-504](#) [130-506](#) [MR-25L+](#) [30-8739](#) [PIP-11774SCREW](#) [30-9715](#) [MR-25LW+](#) [110-407](#) [111-004](#) [111-008](#) [110-402](#) [110-901](#) [110-907](#) [111-002](#) [110-406](#) [110-910](#) [110-404](#) [110-409](#) [110-410](#) [120-405](#) [106-009](#) [106-505](#) [105-401](#) [106-006](#) [104-406](#) [137-002](#) [105-405](#) [111-005](#) [127-909](#) [106-502](#) [130-475](#) [130-503](#) [127-401](#) [106-010](#) [127-455](#) [127-475](#) [110-903](#) [R260-180-300](#) [9511020](#) [9822029](#) [9820014](#) [P61603000P](#) [9823009](#)