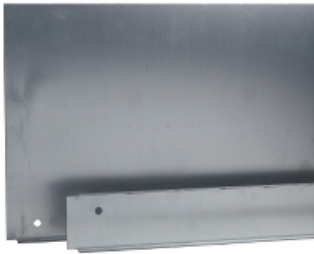




Price* : 21.23 GBP



Main

Range	Spacial
Product or component type	Cable gland plate
Accessory / separate part category	Cable management accessory
Application	Multi-purpose
Range compatibility	Spacial SF Spacial SFP
Mounting location	Enclosure bottom
Cable gland type	Standard
Cable entry	1 entry
Device composition	Fixing elements Self extinguishing polyurethane adhesive gasket with cross-section of 15 x 25 mm 1 plate
Quantity per set	Set of 1
Material	Galvanised steel

Complementary

Height	30 mm
Width	Nominal : 600 mm Useful : 416 mm
Depth	Nominal : 500 mm Real : 450 mm
Thickness	1.5 mm

Offer Sustainability

Sustainable offer status	Green Premium product
RoHS (date code: YYWW)	Compliant - since 0940 - Schneider Electric declaration of conformity Schneider Electric declaration of conformity
REACH	Reference not containing SVHC above the threshold

Reference not containing SVHC above the threshold

Product environmental profile	Available Product Environmental Profile
-------------------------------	--

Product end of life instructions	Need no specific recycling operations
----------------------------------	---------------------------------------

Contractual warranty

Warranty period	18 months
-----------------	-----------

X-ON Electronics

Largest Supplier of Electrical and Electronic Components

Click to view similar products for [Electrical Enclosures](#) category:

Click to view products by [Schneider](#) manufacturer:

Other Similar products are found below :

[120-902](#) [120-905](#) [120-403](#) [120-475](#) [120-901](#) [127-410](#) [130-007](#) [130-504](#) [130-506](#) [MR-25L+](#) [30-8739](#) [PIP-11774SCREW](#) [30-9715](#) [MR-25LW+](#) [110-407](#) [111-004](#) [111-008](#) [110-402](#) [110-901](#) [110-907](#) [111-002](#) [110-406](#) [110-910](#) [110-404](#) [110-409](#) [110-410](#) [120-405](#) [106-009](#) [106-505](#) [105-401](#) [106-006](#) [104-406](#) [137-002](#) [105-405](#) [111-005](#) [127-909](#) [106-502](#) [130-475](#) [130-503](#) [127-401](#) [106-010](#) [127-455](#) [127-475](#) [110-903](#) [R260-180-300](#) [9511020](#) [9822029](#) [9820014](#) [P61603000P](#) [9823009](#)