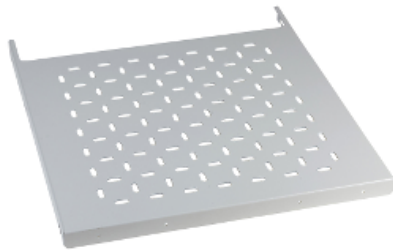


NSYFXT6040

Fixed tray H30xW482xD290 mm for enclosure of
W600xD400 mm - maximum load 150 kg



Price* : 40.05 GBP



Main


Range	Spacial
Accessory / separate part category	Installation accessory
Product or component type	Fixed tray
Application	Multi-purpose
For enclosure nominal dimensions	D: 600 mm 400 mm
Mounting support	Direct to the structure 40 mm cross rails
Range compatibility	Spacial SF Spacial SM
Device composition	Fixing elements 1 fixed tray
Quantity per set	Set of 1

Complementary

Material	Steel
Colour	Grey RAL 7035
Surface finish	Epoxy-polyester powder
Adjustment	Adjustable in depth every 25 mm
Maximum load	150 kg evenly distributed
Height	30 mm
Width	482 mm
Depth	290 mm

Offer Sustainability

Sustainable offer status	Green Premium product
RoHS (date code: YYWW)	Compliant - since 0940 - Schneider Electric declaration of conformity Schneider Electric declaration of conformity

REACH	Reference not containing SVHC above the threshold Reference not containing SVHC above the threshold
Product environmental profile	Available  Product Environmental Profile
Product end of life instructions	Need no specific recycling operations
Contractual warranty	
Warranty period	18 months

X-ON Electronics

Largest Supplier of Electrical and Electronic Components

Click to view similar products for [Electrical Enclosures](#) category:

Click to view products by [Schneider](#) manufacturer:

Other Similar products are found below :

[120-902](#) [120-905](#) [120-403](#) [120-475](#) [120-901](#) [127-410](#) [130-504](#) [130-506](#) [MR-25L+](#) [30-8739](#) [PIP-11774SCREW](#) [30-9715](#) [MR-25LW+](#) [110-407](#) [111-004](#) [111-008](#) [110-402](#) [110-901](#) [110-907](#) [111-002](#) [110-406](#) [110-910](#) [110-404](#) [110-409](#) [110-410](#) [120-405](#) [106-009](#) [106-505](#) [105-401](#) [106-006](#) [104-406](#) [137-002](#) [105-405](#) [111-005](#) [127-909](#) [106-502](#) [130-475](#) [130-503](#) [127-401](#) [106-010](#) [127-455](#) [127-475](#) [110-903](#) [R260-180-300](#) [9511020](#) [9822029](#) [9820014](#) [P61603000P](#) [9823009](#) [R103-164-000](#)