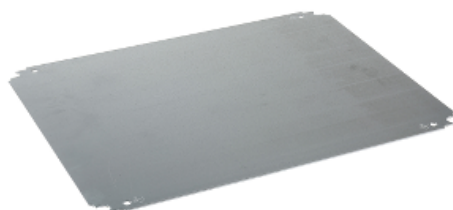




Price* : 9.91 GBP



Main

Range	Spacial
Accessory / separate part category	Mounting accessory
Product or component type	Mounting plate
Application	Multi-purpose
For enclosure nominal dimensions	400 mm W: 300 mm 300 mm W: 400 mm
Mounting location	Step slide Direct fixing on backstuds
Mounting plate description	Plain
Range compatibility	Spacial CRN Spacial S3D Spacial S3X Thalassa PLM
Quantity per set	Set of 1
Material	Galvanised steel
Surface finish	Silkscreened

Complementary

Fixing mode	Screwed on backstuds - screw type M8 By fixing element
Permanent permissible load	60 kg
Height	250 mm
Width	350 mm
Depth	125 mm
Thickness	1.8 mm
Product weight	1.188 kg
Variant particularity	Centimetric grid pattern

Offer Sustainability

Sustainable offer status	Green Premium product
RoHS (date code: YYWW)	Compliant - since 0940 - Schneider Electric declaration of conformity Schneider Electric declaration of conformity
REACH	Reference not containing SVHC above the threshold Reference not containing SVHC above the threshold
Product environmental profile	Available Product Environmental Profile
Product end of life instructions	Need no specific recycling operations

Contractual warranty

Warranty period	18 months
-----------------	-----------

X-ON Electronics

Largest Supplier of Electrical and Electronic Components

Click to view similar products for [Electrical Enclosures](#) category:

Click to view products by [Schneider](#) manufacturer:

Other Similar products are found below :

[120-902](#) [120-905](#) [120-403](#) [120-475](#) [120-901](#) [127-410](#) [130-504](#) [130-506](#) [MR-25L+](#) [30-8739](#) [PIP-11774SCREW](#) [30-9715](#) [MR-25LW+](#) [110-407](#) [111-004](#) [111-008](#) [110-402](#) [110-901](#) [110-907](#) [111-002](#) [110-406](#) [110-910](#) [110-404](#) [110-409](#) [110-410](#) [120-405](#) [106-009](#) [106-505](#) [105-401](#) [106-006](#) [104-406](#) [137-002](#) [105-405](#) [111-005](#) [127-909](#) [106-502](#) [130-475](#) [130-503](#) [127-401](#) [106-010](#) [127-455](#) [127-475](#) [110-903](#) [R260-180-300](#) [9511020](#) [9822029](#) [9820014](#) [P61603000P](#) [9823009](#) [R103-164-000](#)