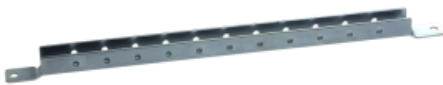




Price\* : 19.28 GBP



### Main

Range	Spacial
Accessory / separate part category	Mounting accessory
Product or component type	Light cross rail
Application	Multi-purpose
For enclosure nominal dimensions	D: 500 mm

### Complementary

Range compatibility	Spacial Spacial SFX Spacial Spacial SM Spacial Spacial SF
Mounting location	On structure of enclosure Between cross rails
Mounting support	Adaptation profile on SM enclosures
Device composition	2 cross rails Fixing elements
Quantity per set	Set of 1
Material	Steel
Surface finish	Zinc coated
Fixing mode	By screws - screw type M6 self tapping
Adjustment	Adjustable with a pitch of 25 mm
Number of horizontal rows	1
Height	30 mm
Width	Nominal : 500 mm Fixing centers : 450 mm Useful : 410 mm
Depth	18.6 mm

### Offer Sustainability

Sustainable offer status	Green Premium product
--------------------------	-----------------------

RoHS (date code: YYWW)	Compliant - since 0940 - Schneider Electric declaration of conformity <a href="#">Schneider Electric declaration of conformity</a>
REACH	Reference not containing SVHC above the threshold <a href="#">Reference not containing SVHC above the threshold</a>
Product environmental profile	Available <a href="#">Product Environmental Profile</a>
Product end of life instructions	Need no specific recycling operations

### Contractual warranty

Warranty period	18 months 18 months
-----------------	---------------------

## X-ON Electronics

Largest Supplier of Electrical and Electronic Components

*Click to view similar products for [Electrical Enclosures](#) category:*

*Click to view products by [Schneider](#) manufacturer:*

Other Similar products are found below :

[120-902](#) [120-905](#) [120-403](#) [120-475](#) [120-901](#) [127-410](#) [130-504](#) [130-506](#) [MR-25L+](#) [30-8739](#) [PIP-11774SCREW](#) [30-9715](#) [MR-25LW+](#) [110-407](#) [111-004](#) [111-008](#) [110-402](#) [110-901](#) [110-907](#) [111-002](#) [110-406](#) [110-910](#) [110-404](#) [110-409](#) [110-410](#) [120-405](#) [106-009](#) [106-505](#) [105-401](#) [106-006](#) [104-406](#) [137-002](#) [105-405](#) [111-005](#) [127-909](#) [106-502](#) [130-475](#) [130-503](#) [127-401](#) [106-010](#) [127-455](#) [127-475](#) [110-903](#) [R260-180-300](#) [9511020](#) [9822029](#) [9820014](#) [P61603000P](#) [9823009](#) [R103-164-000](#)