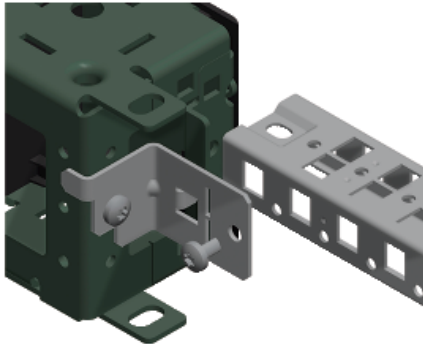


NSYSPCR

Bracket for fixing crossrails in the plinth.
Regulation 25mm pitch.



Price* : 5.50 GBP



Main

Range	Spacial
Accessory / separate part category	Installation accessory
Product or component type	Support
Application	Multi-purpose
For enclosure nominal dimensions	-
Mounting support	Plinth corner
Range compatibility	Spacial CRN Spacial S3D Spacial SF Spacial SM Spacial SD
Device composition	Fixing elements 12 support
Quantity per set	Set of 1

Complementary

Material	Steel
Surface finish	Zinc coated
Fixing mode	By screws - screw type M6 - on corners of plinth location
Adjustment	Adjustable in height every 25 mm
Thickness	2 mm

Offer Sustainability

Sustainable offer status	Green Premium product
RoHS (date code: YYWW)	Compliant - since 0940 - Schneider Electric declaration of conformity Schneider Electric declaration of conformity
REACH	Reference not containing SVHC above the threshold

Reference not containing SVHC above the threshold

Product environmental profile	Available Product Environmental Profile
-------------------------------	--

Product end of life instructions	Need no specific recycling operations
----------------------------------	---------------------------------------

Contractual warranty

Warranty period	18 months
-----------------	-----------

X-ON Electronics

Largest Supplier of Electrical and Electronic Components

Click to view similar products for [Electrical Enclosures](#) category:

Click to view products by [Schneider](#) manufacturer:

Other Similar products are found below :

[120-902](#) [120-905](#) [120-403](#) [120-475](#) [120-901](#) [127-410](#) [130-504](#) [130-506](#) [MR-25L+](#) [30-8739](#) [PIP-11774SCREW](#) [30-9715](#) [MR-25LW+](#) [110-407](#) [111-004](#) [111-008](#) [110-402](#) [110-901](#) [110-907](#) [111-002](#) [110-406](#) [110-910](#) [110-404](#) [110-409](#) [110-410](#) [120-405](#) [106-009](#) [106-505](#) [105-401](#) [106-006](#) [104-406](#) [137-002](#) [105-405](#) [111-005](#) [127-909](#) [106-502](#) [130-475](#) [130-503](#) [127-401](#) [106-010](#) [127-455](#) [127-475](#) [110-903](#) [R260-180-300](#) [9511020](#) [9822029](#) [9820014](#) [P61603000P](#) [9823009](#) [R103-164-000](#)