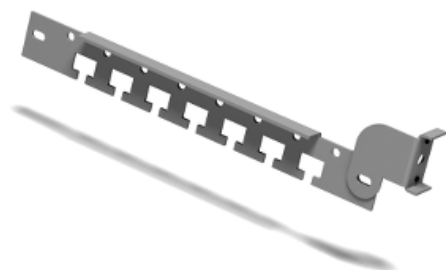




Price* : 36.15 GBP



Main

Range	Spacial
Product or component type	Door cable-guide cross rail
Application	Multi-purpose
For enclosure nominal dimensions	H: -
Mounting location	On door reinforcement frame
Range compatibility	Spacial S3D, CRN, S3X enclosures
Device composition	2 x cross rails Fixing elements
Quantity per set	Set of 1

Complementary

Material	Steel
Surface finish	Zinc coated
Fixing mode	By 2 screws - screw type self tapping - on door reinforcement frame location
Adjustment	At the required height for on door reinforcement frame
Height	30 mm
Width	Nominal : 400 mm Real : 332 mm
Depth	14 mm
Product weight	0.34 kg

Offer Sustainability

Sustainable offer status	Green Premium product
RoHS (date code: YYWW)	Compliant - since 0940 - Schneider Electric declaration of conformity Schneider Electric declaration of conformity
REACH	Reference not containing SVHC above the threshold Reference not containing SVHC above the threshold

Product environmental profile	Available Product Environmental Profile
-------------------------------	--

Product end of life instructions	Need no specific recycling operations
----------------------------------	---------------------------------------

Contractual warranty

Warranty period	18 months
-----------------	-----------

X-ON Electronics

Largest Supplier of Electrical and Electronic Components

Click to view similar products for [Electrical Enclosures](#) category:

Click to view products by [Schneider](#) manufacturer:

Other Similar products are found below :

[120-902](#) [120-905](#) [120-403](#) [120-475](#) [120-901](#) [127-410](#) [130-504](#) [130-506](#) [MR-25L+](#) [30-8739](#) [PIP-11774SCREW](#) [30-9715](#) [MR-25LW+](#) [110-407](#) [111-004](#) [111-008](#) [110-402](#) [110-901](#) [110-907](#) [111-002](#) [110-406](#) [110-910](#) [110-404](#) [110-409](#) [110-410](#) [120-405](#) [106-009](#) [106-505](#) [105-401](#) [106-006](#) [104-406](#) [137-002](#) [105-405](#) [111-005](#) [127-909](#) [106-502](#) [130-475](#) [130-503](#) [127-401](#) [106-010](#) [127-455](#) [127-475](#) [110-903](#) [R260-180-300](#) [9511020](#) [9822029](#) [9820014](#) [P61603000P](#) [9823009](#) [R103-164-000](#)