

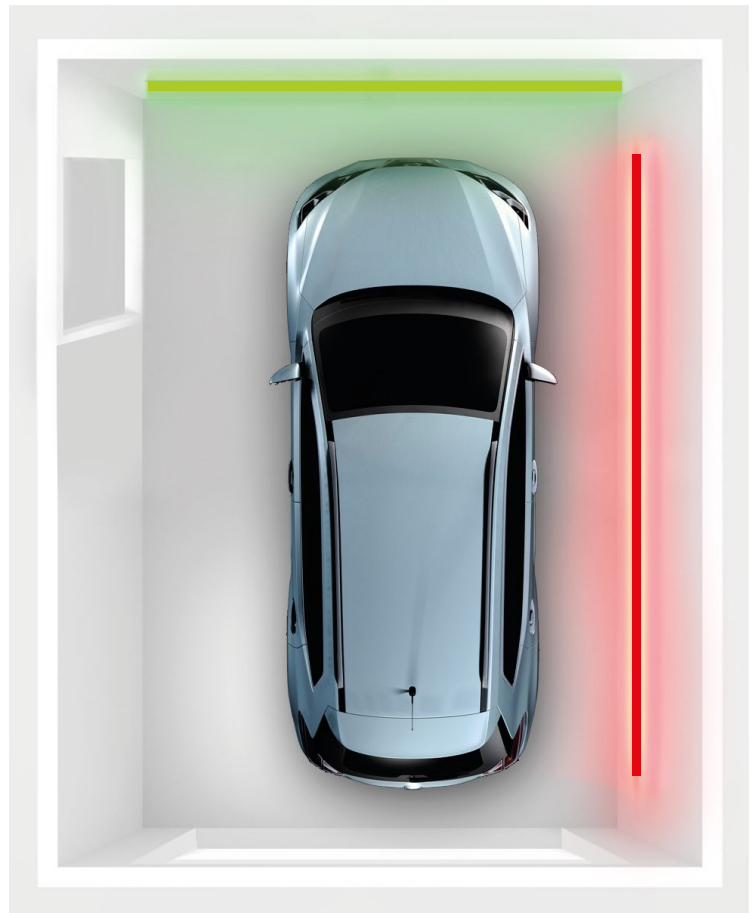


PRODUCT OFFER

parkingSensor is an unique RGB LED controller, which helps parking by using colorful lights

•
it controls in a direct way the LED/LED RGB (e.g. LED strip, lighting fixture) and by changing the colors of the light it informs the vehicle driver about the distance from the obstacle

•
very useful in single-family house garages and underground parking garages (both private and public - for example, in shopping malls)



•
in contrast to similar devices available on the market, it does not require installation of additional, expensive controller - it only needs a power source

•
small size and ease of installation, enables to fast and easy mounting of the device in the parking location





TECHNICAL SPECIFICATIONS

electrical parameters					
supply voltage	▶	7 – 24V DC	number of PWM channels	▶	3 (RGB)
maximum current	▶	8 A	energy consumption	▶	< 1 W
output type	▶	open collector, 250mA	additional output	▶	output on the presence detector
physical characteristics of the device					
sensor	▶	ultrasonic, distance sensor	degree of protection	▶	IP20
dimensions	▶	50 x 40 x 25 mm with connector: 50 x 50 x 25 mm	operating temperature range	▶	from -10 to + 40°C
housing	▶	made of polyurethane composition not containing halogens, Self-extinguishing for Thermal class B (130 °C)	calibration of notified distance	▶	yes



lighting

Products associated with lightning



sensors

Sensing elements



garage

Products for use in garages and parkings

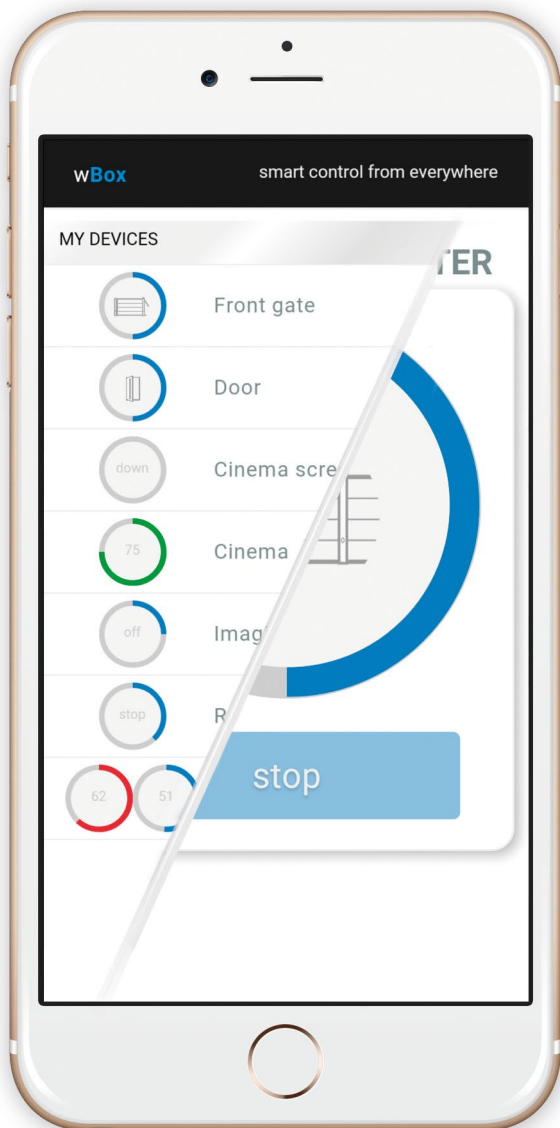


car

Devices associated with the automotive industry



- ▶ simplicity and scalability



Smart homes were from the beginning associated with expensive and complicated installations. Over the past five years, cheaper and less complicated solutions have appeared on the market. However, they have some disadvantages. To work they require a central unit, which is an intermediary device which makes possible the communication between the user (and more specifically the Smartphone or Tablet) and the controller. That device is far more expensive than the individual elements of the system and susceptible to failure. Such damage would cause the paralysis of the entire smart building.

wBox is *an unique global solution*. To operate, WBox devices **do not need additional equipment** such as Central Unit or hub. Just a simple WiFi network is enough. After connecting the device with your home network, it can be controlled from any place in the World. Without complicated configuration. You can start from one "cube" lamp or roller shutter controller and then extend **your own smart home** adding another one – according to your needs.

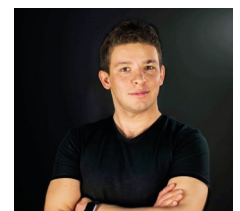
It is a solution created by *a team of inventors and engineers, authors awarded with "The Polish Invention of the year 2014"* and the *Innovators WPROST 2016 award*. They were also nominated to the *"Top Innovators under 35" award*, who up to the present have created over 30 innovative products and services.

Designed and produced entirely in Europe.

PATRYK ARŁAMOWSKI

founder of blebox.eu

CEO & founder of blebox.eu



blebox.eu

Blebox.eu is a brand of high-quality products related to home automation. Created in 2013 by authors of the "Polish Invention of the year 2014" and 30 other technological and product innovations. Within 3 years it has evolved from a local start-up to an international company which provides innovative products to more than 20 countries of the world, including China.

Our products are completely designed (we have our own research laboratories) and produced in the European Union, in particular in Poland and Germany. We take the issues of quality and reliability very seriously. That's why we give on our products a 5 year warranty, creating a brand based on trust.

In 2016 Blebox.eu was awarded with the crystal statuette Innovators 2016 granted by the editors of Wprost, the Ministry of Science and Higher Education and the Ministry of Development, for the most innovative company in Poland.

We invite installers, shops and wholesalers to cooperate with us. For a constant cooperation we offer attractive discounts and the possibility to customize own requirements and creating new solutions.



MORE INFORMATION:



Anahi Lopez

anahi.lopez@blebox.eu
tel. +48 731 868 105

www.blebox.eu

X-ON Electronics

Largest Supplier of Electrical and Electronic Components

Click to view similar products for [Power Management IC Development Tools](#) category:

Click to view products by [BLEBOX](#) manufacturer:

Other Similar products are found below :

[EVAL6482H-DISC](#) [EVAL-AD5522EBUZ](#) [EVAL-ADM1060EBZ](#) [EVAL-ADM1073MEBZ](#) [EVAL-ADM1166TQEBZ](#) [EVAL-ADM1168LQEBZ](#) [EVAL-ADM1171EBZ](#) [EVAL-ADM1276EBZ](#) [EVB-EN5319QI](#) [EVB-EN5365QI](#) [EVB-EN6347QI](#) [EVB-EP5348UI](#) [MIC23158YML EV](#) [MIC23451-AAAYFL EV](#) [MIC5281YMME EV](#) [ADM00513](#) [ADM8611-EVALZ](#) [ADM8612-EVALZ](#) [ADM8613-EVALZ](#) [ADM8615-EVALZ](#) [ADP1046ADC1-EVALZ](#) [ADP1055-EVALZ](#) [ADP122-3.3-EVALZ](#) [ADP130-0.8-EVALZ](#) [ADP130-1.2-EVALZ](#) [ADP130-1.5-EVALZ](#) [ADP130-1.8-EVALZ](#) [ADP160UJZ-REDYKIT](#) [ADP166UJ-EVALZ](#) [ADP1712-3.3-EVALZ](#) [ADP1714-3.3-EVALZ](#) [ADP1715-3.3-EVALZ](#) [ADP1716-2.5-EVALZ](#) [ADP1740-1.5-EVALZ](#) [ADP1752-1.5-EVALZ](#) [ADP1754-1.5-EVALZ](#) [ADP1828LC-EVALZ](#) [ADP1870-0.3-EVALZ](#) [ADP1871-0.6-EVALZ](#) [ADP1873-0.6-EVALZ](#) [ADP1874-0.3-EVALZ](#) [ADP1876-EVALZ](#) [ADP1879-1.0-EVALZ](#) [ADP1882-1.0-EVALZ](#) [ADP1883-0.6-EVALZ](#) [ADP197CB-EVALZ](#) [ADP199CB-EVALZ](#) [ADP2102-1.25-EVALZ](#) [ADP2102-1.2-EVALZ](#) [ADP2102-1.875EVALZ](#)