

PFR-100M/100L

Fanless Multi-Range D.C. Power Supply

FEATURES

- Constant Power Output for 5 Times Multi-range(V&I) Operation
- Natural Convection Cooling Design(Fanless Structure)
- Preset Memory Function
- Output ON/OFF Delay Function
- CV, CC Priority Mode
- Adjustable Slew Rate For Voltage and Current
- Bleeder Circuit Control
- Protection : OVP, OCP, AC FAIL and OTP
- Support Front Panel and Rear Panel Output
- Built-in USB and RS-232/485 Interface Optional LAN+GPIB
- Web Server Monitoring and Control
- External Analog Control and Monitor Function
- Remote Sensing Function

GW INSTEK
Simply Reliable

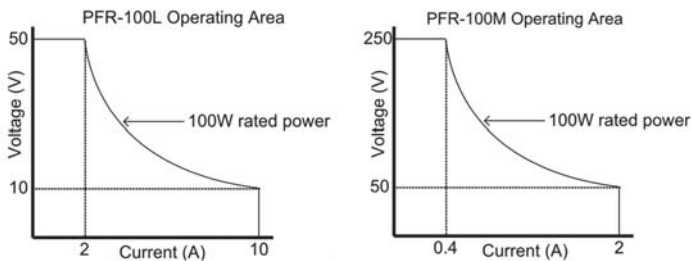
The PFR-100 series, a small and high-performance programmable D.C. power supply, adopts natural convection design to dissipate heat. The fanless structure allows users to focus on their experiments and tests in a quiet environment. Fanless power supply will not suck in dust and foreign objects, therefore, PFR-100 series has a longer life cycle compared with that of power supplies with fan.

The PFR-100 series is a power supply with a five-fold rated power that allows users to self-define voltage and current under rated power conditions so as to satisfy them with wider voltage and current operational ranges. PFR-100 series, with rated 100W, provides two models: PFR-100L- maximum output voltage of 50V (at 2A) or maximum output current of 10A (at 10V); PFR-100M- maximum output voltage of 250V (at 0.4A) or maximum output current of 2A (at 50V).

The PFR-100 series provides front and rear panel output terminals. The front panel output terminal helps users shorten test lead replacement time while conducting adjustment on front panel's function keys. The rear panel output terminal facilitates an easy wiring operation for rackmount assembly. 3U height, 70mm width and 2.5KG in weight have greatly elevated PFR-100 series portability. Furthermore, the multi-drop mode allows users to control up to 31 PFR-100 series without using switch/Hub that help users save the equipment cost.

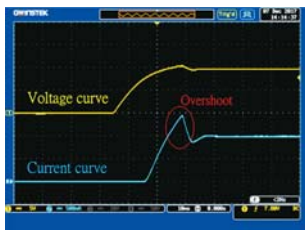
The LAN interface for PFR-100 is Ethernet port. PFR-100 also has a built-in web server and intuitive user interface. Users, via general browsers including Internet Explorer, Mozilla Firefox or Android cellular phones, can monitor PFR-100's test and measurement anywhere. Users not only can remotely monitor PFR-100 via internet, but also remotely observe and adjust their operating PFR-100s in the lab from your home. The outputs of PFR-100 series can be monitored including OVP, OCP, UVL; and the system information can be checked such as unit's serial number, firmware edition and internet setting. Users can remotely adjust PFR-100 settings, including output voltage/current, the slew rate for voltage/current, Bleeder circuit control, OCP, delayed time for output voltage and Buzzer settings.

The PFR-100 series provides special functionalities to meet test requirements for different load's characteristics. The CC priority mode can be applied for DUTs with diode characteristics to prevent DUT from being damaged by inrush current. A slow rise time for voltage can also protect DUT from inrush current, especially for tests on capacitive load. When power is off or load is disconnected, the activation of Bleeder circuit control will allow the bleeder resistor to consume filter capacitor's electricity. Without the bleed resistor, power supply's filter capacitor may still have electricity that is a potential hazard. For automatic testing equipment systems, the bleeder resistor allows PFR-100 series to rapidly discharge to prepare itself for the next operation.

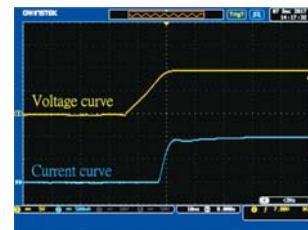


Model	PFR-100L	PFR-100M
Output Channel	1	1
Output Voltage	0~ 50V	0~ 250V
Output Current	0~ 10A	0~ 2A
Rated Power	100W	100W

A. C.V/C.C PRIORITY MODE



Under the conventional C.V mode, inrush current and surge voltage appeared at forward voltage (Vf) of LED

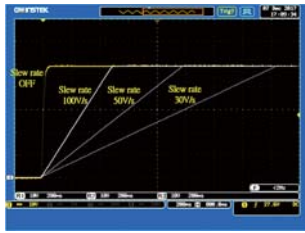


Under C.C priority mode, inrush and surge voltage are effectively restrained.

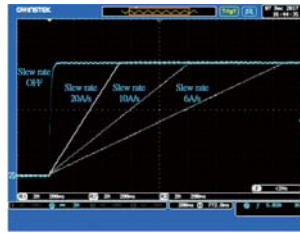
Under the application conditions of diode load, conventional power supplies under the C.V priority mode will produce inrush current and surge voltage at turn-on. The PFR-100 series has

C.V and C.C priority modes. The C.C priority mode can prevent inrush current and surge voltage from occurring at turn-on to protect DUT.

B ADJUSTABLE SLEW RATE



Adjustable Voltage Slew Rate



Adjustable Current Slew Rate

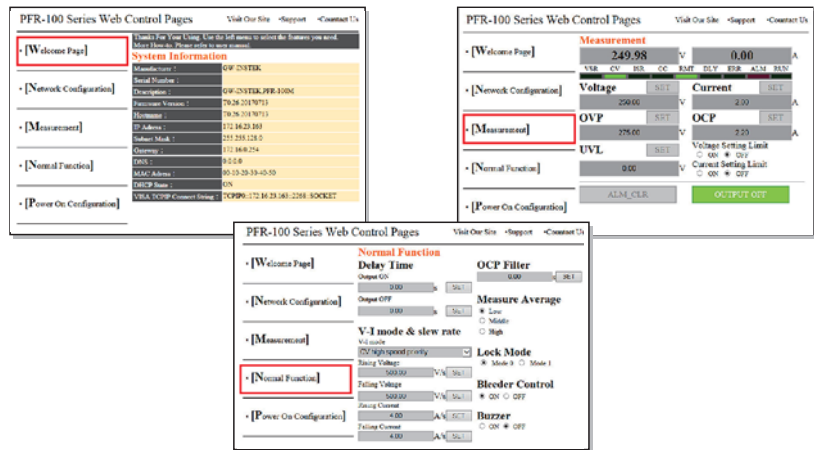
Voltage Slew Rate
 0.1V~100.0V/sec (PFR-100L)
 0.1V~500.0V/sec (PFR-100M)

Current Slew Rate
 0.01A~20.00A/sec (PFR-100L)
 0.001A~4.000A/sec (PFR-100M)

The PFR-100 series can adjust slew rate for current and voltage. Via setting the rise and fall time of voltage and current, users can verify DUT's characteristics during voltage and current variation. Additionally, slew rate adjustment can mitigate voltage shift to

effectively prevent DUT from being damaged by inrush current. This function is ideal for tests such as capacitive load and motor.

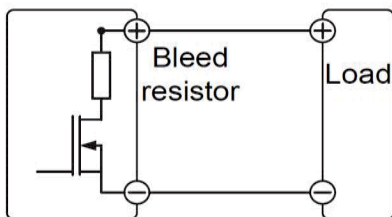
C WEB SERVER REMOTE CONTROL FUNCTION



Users, via general browsers including Internet Explorer, Mozilla Firefox or Android cellular phones, can monitor PFR-100's test and measurement anywhere. Users not only can remotely monitor PFR-100 via internet, but also remotely observe and adjust your operating PFR-100 in the lab from your home. The outputs of PFR-100 can be monitored including OVP, OCP, UVL; and system

information can be checked such as unit's serial number, firmware edition and internet setting. Users can remotely adjust PFR-100 settings, including output voltage/current, the slew rate for voltage/current, Bleed circuit control, OCP, delayed time for output voltage and Buzzer settings.

D BLEEDER CIRCUIT CONTROL

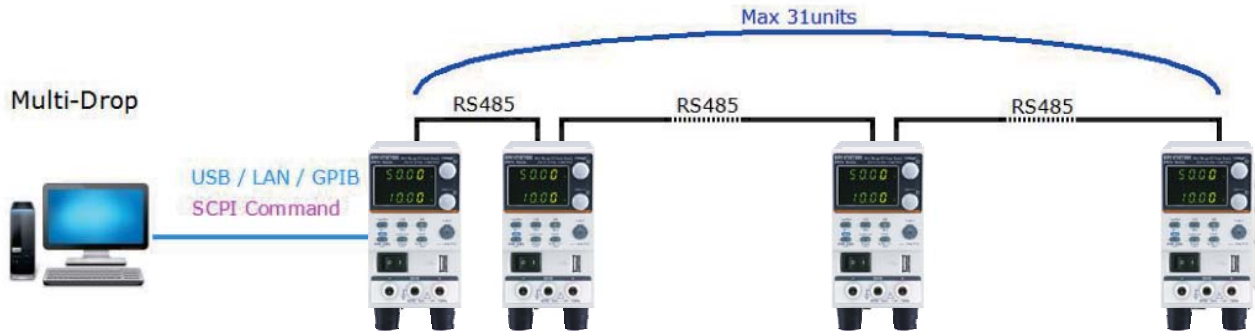


PFR-100 Series Bleeder Circuit

The PFR-100 series power supply has a bleeder circuit control which is in parallel with the output terminal. When power is off or load is disconnected, the bleeder resistor will consume electricity from the filter capacitor. Without a bleed resistor, the filter capacitor of power could still be charged with electricity that poses a potential danger. In addition, for ATE system, bleed resistor allows the PFR-100 series to bleed current rapidly so as to prepare itself for the next operation.

E

REMOTE PROGRAM CONTROL (UP TO 31 UNITS CONNECTION)

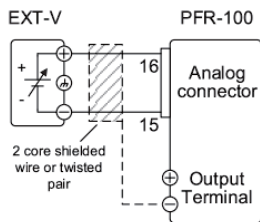


Provide USB, GPIB and LAN for PC to remote control Master PFR-100. RJ-45 connector on the rear panel can connect up to 31 units. LAN or USB remote control and augmenting slave

units by using the multi-drop mode will no longer need any switch/hub that can help customers save equipment costs.

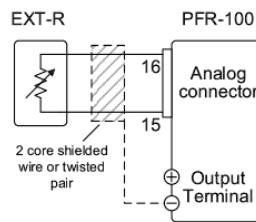
F

EXTERNAL ANALOG CONTROL FUNCTION



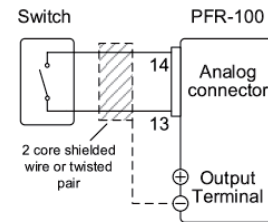
Pin16 → EXT-V (+)
Pin15 → EXT-V (-)
Wire shield → negative (-) output terminal

**External Voltage Controls
Voltage Range**



Pin16 → EXT-R
Pin15 → EXT-R
Wire shield → negative (-) output terminal

**External Resistance Controls
Voltage Range**



Pin14 → Switch
Pin13 → Switch
Wire shield → negative (-) output terminal

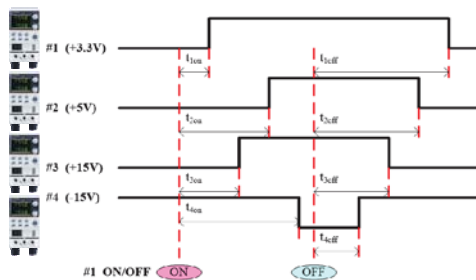
**External ON-OFF To Control
Output, ON or OFF**

The rear panel of the PFR-100 series has an analog control terminal. The external analog control interface allows external voltage or resistance to control voltage and current output; and allows power supply to output or to be turned on and off.

The diagram above shows typical connection methods for external control applications. For more detailed connection information please refer to user manual.

G

OUTPUT ON/OFF DELAY



**An Example of Output On/Off Delay Control Among
Multiple Outputs of the PFR-100 units**

The Output On/Off delay feature enables the setting of a specific time delay for output on after the power supply output is turned on, and a specific time delay for output off after the power supply output is turned off. When multiple PFR-100 units are used, the On/Off delay time of each unit can be set respectively referring to fix time points. This multiple-output control can be done through the analog control terminal at rear panel or through the PC programming with standard commands.

H

USING THE RACK MOUNT KIT



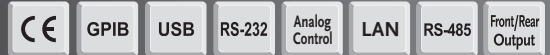
GRA-431-E (EIA) Rack Mount Kit



GRA-431-J (JIS) Rack Mount Kit

The Rack Mount Kits of the PFR-100 Series support both EIA and JIS standards. A standard rack can accommodate 5 units of PFR-100.

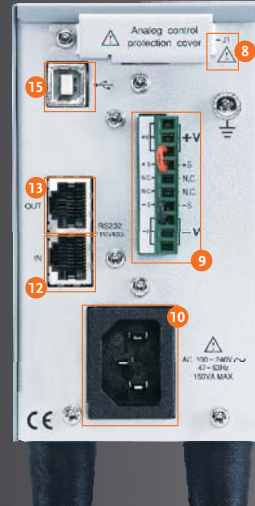
PANEL INTRODUCTION



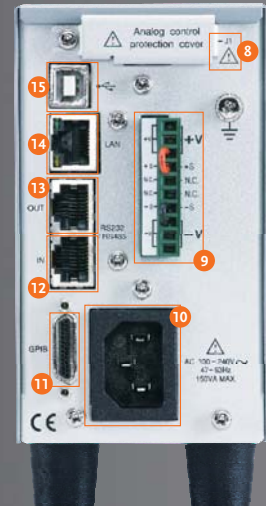
PFR-100L Front Panel



PFR-100M Front Panel



PFR-100L Rear Panel



PFR-100M Rear Panel

- | | |
|--------------------------------|--|
| 1. Voltage Knob | 9. Rear Panel Output Terminal |
| 2. Current Knob | 10. AC Input |
| 3. Output Button | 11. GPIB Connector (Factory Installed Options) |
| 4. USB Type A Connector | 12. Remote Serial In Connector |
| 5. Front Panel Output Terminal | 13. Remote Serial Out Connector |
| 6. Power Switch | 14. LAN Connector (Factory Installed Options) |
| 7. Display Area | 15. USB Type B Connector |
| 8. Analog Control Interface | |

OPTIONAL ASSESSORIES

PSU-232

Rs232 Cable with Db9 connector kit



GTL-104A

test lead(for PFR-100L only)



GTL-258

GPIB Cable, 2000mm



GTL-134

test lead



PSU-485

Rs485 Cable with Db9 connector kit



GTL-105A

test lead(for PFR-100M only)



GTL-246

USB Cable (USB 2.0 Type A-TypeB Cable)



SPECIFICATIONS

	Model		PFR-100L	PFR-100M
OUTPUT RATING	Rated Output Voltage Rated Output Current Rated Output Power		50V 10A 100W	250V 2A 100W
REGULATION(CV)	Load Regulation (*2) Line Regulation (*1)		10mV 3mV	33mV 5mV
REGULATION(CC)	Load Regulation (*9) Line Regulation (*1)		10mA 8mA	3.2mA 1.2mA
RIPPLE & NOISE (*3)	Vp-p (*4) Vr.m.s. (*5) A r.m.s.		50mV 4mV 10mA	150mV 15mV 2mA
PROGRAMMING ACCURACY	Voltage Current	0.1% of setting + 0.2% of setting +	40mV 20mA	200mV 2mA
MEASUREMENT ACCURACY	Voltage Current	0.1% of reading + 0.2% of reading +	40mV 20mA	200mV 2mA
RESPONSE TIME	Rise Time (*6) Fall Time (*7) Transient Response Time (*8)	Rated load Rated load No load	50ms 100ms 500ms 1.5ms	200ms 300ms 3000ms 2ms
PROGRAMMING RESOLUTION	Voltage Current		2mV 1mA	10mV 0.1mA
MEASUREMENT RESOLUTION	Voltage Current		2mV 1mA	10mV 0.1mA
PROTECTION FUNCTION	Over Voltage Protection (OVP) Over Current Protection (OCP) Under Voltage Limit (UVL) Over Temperature Protection (OTP) Low AC Input Protection (AC-Fail) Power Limit (Power Limit)	Setting range Setting range Setting range Operation Operation Operation	5~55V 1~11A 0~52.5V Turn the output off. Turn the output off. Turn the output off.	5~275V 0.2~2.2A 0~262.5V Turn the output off. Turn the output off. Turn the output off.
FRONT PANEL DISPLAY ACCURACY, 4 DIGITS	Voltage Current	0.1% of reading + 0.2% of reading +	40mV 20mA	200mV 2mA
ENVIRONMENT CONDITION	Operating Temperature Storage Temperature Operating Humidity Storage Humidity		0 °C to 40 °C -20 °C to 70 °C 20% to 80% RH; No condensation 20% to 85% RH; No condensation	
READBACK TEMP. COEFFICIENT (After A 30 Minute Warm-up)	Voltage Current		100ppm/°C 200ppm/°C	
OTHER	Analog Control Interface AC Input		Yes USB, RS-232/RS-485; Factory option: LAN/GPIB 85~265VAC, 47~63Hz, single phase	
DIMENSIONS & WEIGHT	70(W)x124(H)x300(D)mm; Approx. 2.5kg			

- Notes: *1: At 85 ~ 132Vac or 170 ~ 265Vac, constant load.
*2: From No-load to Full-load, constant input voltage. Measured at the sensing point in Remote Sense.
*3: Measure with JEITA RC-9131B (1:1) probe
*4: Measurement frequency bandwidth is 10Hz to 20MHz.
*5: Measurement frequency bandwidth is 5Hz to 1MHz.
*6: From 10%~90% of rated output voltage, with rated resistive load.
*7: From 90%~10% of rated output voltage, with rated resistive load.
*8: Time for output voltage to recover within 0.1% + 10mV of its rated output for a load change from 50 to 100% of its rated output current.
*9: For load voltage change, equal to the unit voltage rating, constant input voltage.

PFR-100 Series Fanless Multi-Range D.C. Power Supply

PFR-100□ - GL - GTL-258

Model: L : 0-50V/10A/100W
M : 0-250V/2A/100W

Cable Options:

GTL-258 : A GPIB cable including 25 pins Micro-D connector
PSU-232 : An RS-232 cable including RJ-45 connector
PSU-485 : An RS-485 cable including RJ-45 connector
GTL-246 : A USB cable for TypeA-TypeB connectors

Interface Options:

□ : USB (Type B) & RS-232/RS-485 (RJ-45 connector) as default
GL : LAN & GPIB (25 pins Micro-D connector)

ORDERING INFORMATION

PFR-100L Fanless Multi-Range D.C. Power Supply
PFR-100M Fanless Multi-Range D.C. Power Supply

ACCESSORIES

CD (User Manual, Programming manual) x 1, Power cord, GTL-134 test lead, Accessory Packages, GTL-104A test lead (for PFR-100L only), GTL-105A test lead (for PFR-100M only)

OPTIONAL ASSESSORIES

GTL-258 GPIB Cable, 2000mm
PSU-232 RS-232 Cable with DB9 Connector Kit
PSU-485 RS-485 Cable with DB9 Connector Kit
GTL-246 USB Cable (USB 2.0 Type A-Type B Cable)
GRA-431-J-100/200 Rack mount adapter (JIS) with AC 100V/200V
GRA-431-E-100/200 Rack mount adapter (EIA) with AC 100V/200V
PFR-GL LAN+GPIB interface

Specifications subject to change without notice. PFR100LMDIC1BH

Global Headquarters

GOOD WILL INSTRUMENT CO., LTD.

No.7-1, Jhongsing Road, Tucheng Dist., New Taipei City 236, Taiwan
T +886-2-2268-0389 F +886-2-2268-0639
E-mail: marketing@goodwill.com.tw

China Subsidiary

GOOD WILL INSTRUMENT (SUZHOU) CO., LTD.

No. 521, Zhujiang Road, Snd, Suzhou Jiangsu 215011 China
T +86-512-6661-7177 F +86-512-6661-7277
E-mail: marketing@instek.com.cn

Malaysia Subsidiary

GOOD WILL INSTRUMENT (SEA) SDN. BHD.

No. 1-3-18, Elit Avenue, Jalan Mayang Pasir 3,
11950 Bayan Baru, Penang, Malaysia
T +604-6111122 F +604-6115225
E-mail: sales@goodwill.com.my

Europe Subsidiary

GOOD WILL INSTRUMENT EURO B.V.

De Run 5427A, 5504DG Veldhoven, THE NETHERLANDS
T +31 (0)40-2557790 F +31 (0)40-2541194

U.S.A. Subsidiary

INSTEK AMERICA CORP.

5198 Brooks Street Montclair, CA 91763, U.S.A.
T +1-909-399-3535 F +1-909-399-0819
E-mail: sales@instekamerica.com

Japan Subsidiary

TEXIO TECHNOLOGY CORPORATION.

7F Towa Fudosan Shin Yokohama Bldg., 2-18-13 Shin
Yokohama, Kohoku-ku, Yokohama, Kanagawa,
222-0033 Japan
T +81-45-620-2305 F +81-45-534-7181
E-mail: info@texio.co.jp

Korea Subsidiary

GOOD WILL INSTRUMENT KOREA CO., LTD.

Room No.503, Gyeonginro 775 (Mullae-Dong 3Ga,
Ace Hightech-City B/D 1Dong), Yeongduengpo-Gu,
Seoul 150093, Korea.
T +82-2-3439-2205 F +82-2-3439-2207
E-mail : gwinstek@gwinstek.co.kr

GW INSTEK

Simply Reliable



www.gwinstek.com

www.facebook.com/GWInstek

X-ON Electronics

Largest Supplier of Electrical and Electronic Components

Click to view similar products for [Bench Top Power Supplies](#) category:

Click to view products by [GW Connect](#) manufacturer:

Other Similar products are found below :

[NL200](#) [PR20](#) [ZUPNC403](#) [Z60-7-L-U](#) [ZUPNC402](#) [GDM-8342](#) [GPIB](#) [PSW 250-4.5](#) [CPX200DP](#) [AX-8450A](#) [TPM-3003](#) [HMP2020](#)
[HMP2030](#) [HMP4040](#) [1320](#) [1350](#) [UT804](#) [1405](#) [1410](#) [1513](#) [1514](#) [1513](#) [1550](#) [1651A](#) [1665](#) [1666](#) [1667](#) [SDP-2405-000G](#) [1673](#) [1693](#) [1694](#)
[MX100TP](#) [1737](#) [1739](#) [1762](#) [1788](#) [TPM-3005](#) [1900](#) [1902B](#) [9174B](#) [GDM-8245](#) [GDM-8255A](#) [GDM-8341](#) [PSW 160-7.2](#) [PSW 30-36](#) [PSW](#)
[80-13.5](#) [Z10-20-LAN-U](#) [PSW 30-72](#) [QL355P SII](#) [Z36-6-LAN-U](#) [HCS-3400-USB](#)