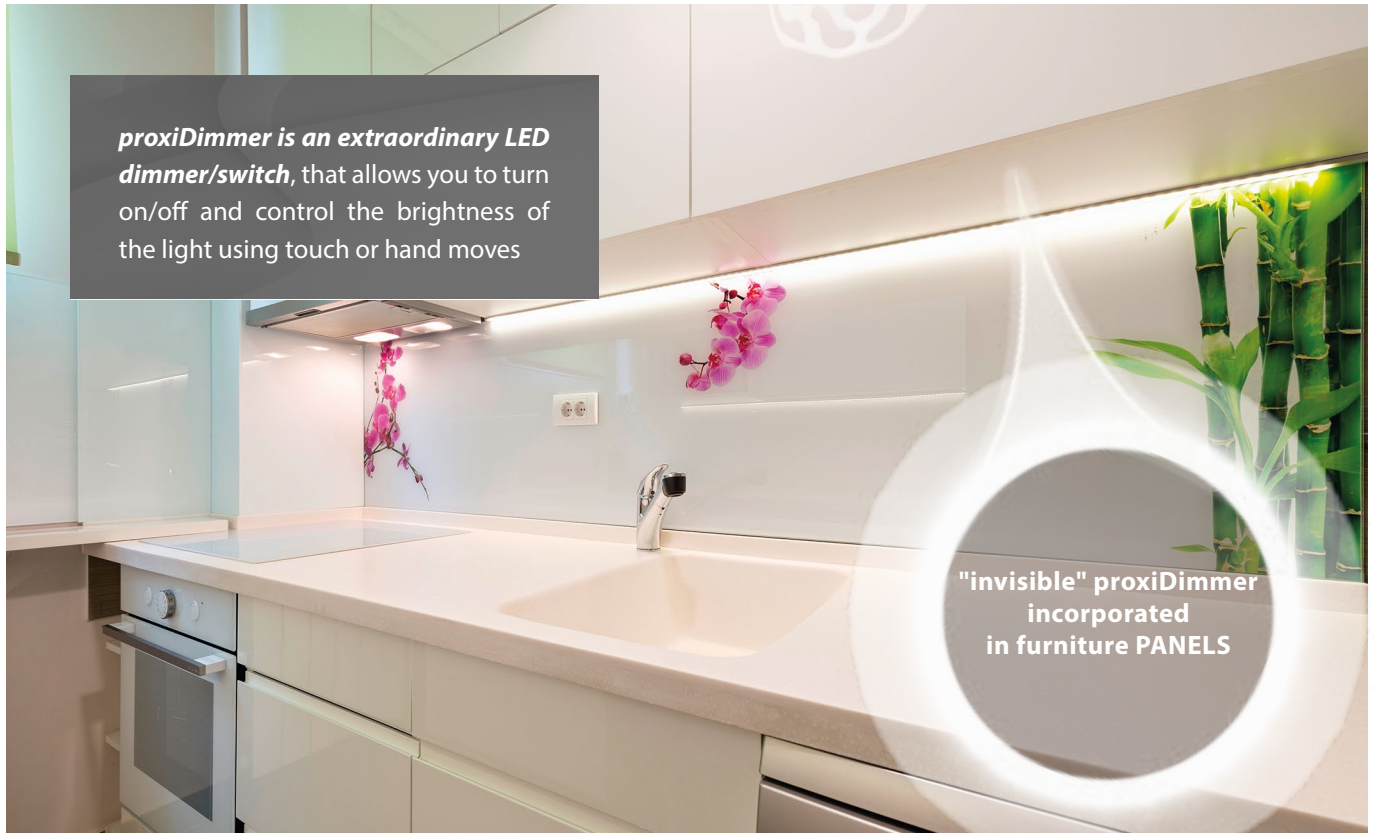




PRODUCT OFFER



*proxidimmer is an extraordinary LED dimmer/switch, that allows you to turn on/off and control the brightness of the light using touch or hand moves*

**"invisible" proxidimmer incorporated in furniture PANELS**

works through nonconductive materials (wood, stone, glass, etc.), so that it can be embedded in different objects (such as furniture) - it becomes invisible then

patented technology to detect the closeness of objects with dynamic calibration makes it so that the sensitivity adjustment is not required - it automatically calibrates within a few seconds

it has time functions (turning the lights on for a 15 seconds time period)



is also available in the OEM version for furniture manufacturers



### TECHNICAL SPECIFICATIONS

electrical parameters					
supply voltage	▶	12 – 24 V DC	maximum power	▶	120 W
maximum current	▶	5 A	energy consumption	▶	< 0,1 W
physical characteristics of the device					
sensor	▶	proximity, capacitive sensor	degree of protection	▶	IP20
calibration	▶	automatic	mounting method	▶	under the surface of non-conductive, adhesive tape
dimensions	▶	50 x 40 x 19 mm	operating temperature range	▶	from -10 to +40°C
housing	▶	made of polyurethane composition not containing halogens, Self-extinguishing for Thermal class B (130 °C)			



lighting

Products associated with lightning

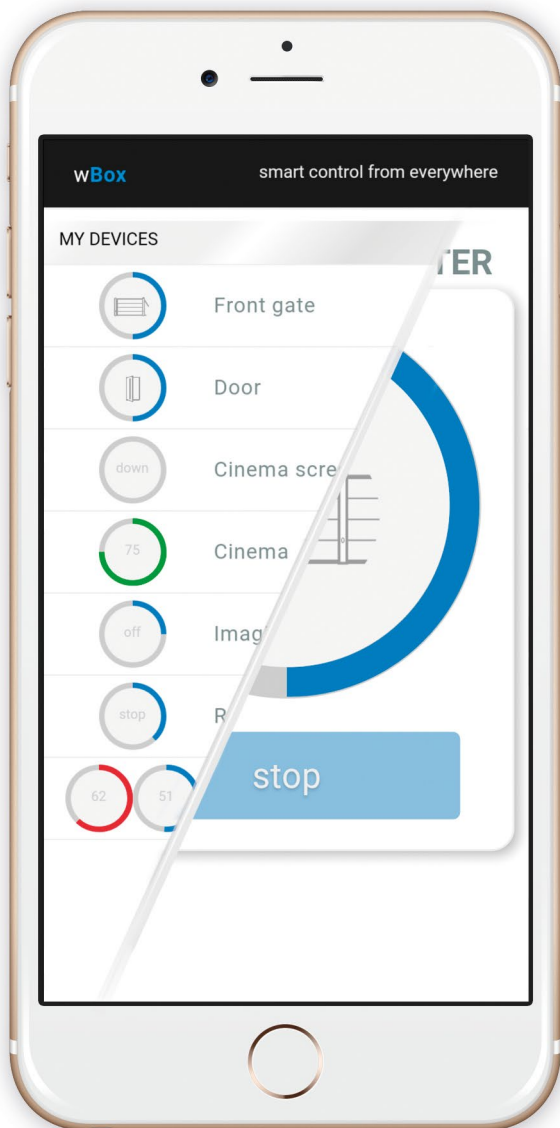


sensors

Sensing elements



- ▶ simplicity and scalability



**Smart homes** were from the beginning associated with expensive and complicated installations. Over the past five years, cheaper and less complicated solutions have appeared on the market. However, they have some disadvantages. To work they require a central unit, which is an intermediary device which makes possible the communication between the user (and more specifically the Smartphone or Tablet) and the controller. That device is far more expensive than the individual elements of the system and susceptible to failure. Such damage would cause the paralysis of the entire smart building.

**wBox** is *an unique global solution*. To operate, WBox devices **do not need additional equipment** such as Central Unit or hub. Just a simple WiFi network is enough. After connecting the device with your home network, it can be controlled from any place in the World. Without complicated configuration. You can start from one "cube" lamp or roller shutter controller and then extend **your own smart home** adding another one – according to your needs.

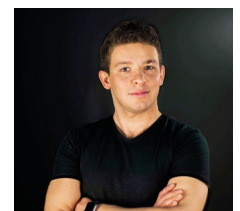
It is a solution created by *a team of inventors and engineers, authors awarded with "The Polish Invention of the year 2014"* and the *Innovators WPROST 2016 award*. They were also nominated to the *"Top Innovators under 35" award*, who up to the present have created over 30 innovative products and services.

Designed and produced entirely in Europe.

**PATRYK ARŁAMOWSKI**

*founder of blebox.eu*

CEO & founder of blebox.eu



**blebox.eu**

Blebox.eu is a brand of high-quality products related to home automation. Created in 2013 by authors of the "Polish Invention of the year 2014" and 30 other technological and product innovations. Within 3 years it has evolved from a local start-up to an international company which provides innovative products to more than 20 countries of the world, including China.

Our products are completely designed (we have our own research laboratories) and produced in the European Union, in particular in Poland and Germany. We take the issues of quality and reliability very seriously. That's why we give on our products a 5 year warranty, creating a brand based on trust.

In 2016 Blebox.eu was awarded with the crystal statuette Innovators 2016 granted by the editors of Wprost, the Ministry of Science and Higher Education and the Ministry of Development, for the most innovative company in Poland.

We invite installers, shops and wholesalers to cooperate with us. For a constant cooperation we offer attractive discounts and the possibility to customize own requirements and creating new solutions.



MORE INFORMATION:

---



**Anahi Lopez**

anahi.lopez@blebox.eu  
tel. +48 731 868 105

---

**www.blebox.eu**

## X-ON Electronics

Largest Supplier of Electrical and Electronic Components

*Click to view similar products for [Power Management IC Development Tools](#) category:*

*Click to view products by [BLEBOX](#) manufacturer:*

Other Similar products are found below :

[EVAL6482H-DISC](#) [EVAL-AD5522EBUZ](#) [EVAL-ADM1060EBZ](#) [EVAL-ADM1073MEBZ](#) [EVAL-ADM1166TQEBZ](#) [EVAL-ADM1168LQEBZ](#) [EVAL-ADM1171EBZ](#) [EVAL-ADM1276EBZ](#) [EVB-EN5319QI](#) [EVB-EN5365QI](#) [EVB-EN6347QI](#) [EVB-EP5348UI](#) [MIC23158YML EV](#) [MIC23451-AAAYFL EV](#) [MIC5281YMME EV](#) [ADM00513](#) [ADM8611-EVALZ](#) [ADM8612-EVALZ](#) [ADM8613-EVALZ](#) [ADM8615-EVALZ](#) [ADP1046ADC1-EVALZ](#) [ADP1055-EVALZ](#) [ADP122-3.3-EVALZ](#) [ADP130-0.8-EVALZ](#) [ADP130-1.2-EVALZ](#) [ADP130-1.5-EVALZ](#) [ADP130-1.8-EVALZ](#) [ADP160UJZ-REDYKIT](#) [ADP166UJ-EVALZ](#) [ADP1712-3.3-EVALZ](#) [ADP1714-3.3-EVALZ](#) [ADP1715-3.3-EVALZ](#) [ADP1716-2.5-EVALZ](#) [ADP1740-1.5-EVALZ](#) [ADP1752-1.5-EVALZ](#) [ADP1754-1.5-EVALZ](#) [ADP1828LC-EVALZ](#) [ADP1870-0.3-EVALZ](#) [ADP1871-0.6-EVALZ](#) [ADP1873-0.6-EVALZ](#) [ADP1874-0.3-EVALZ](#) [ADP1876-EVALZ](#) [ADP1879-1.0-EVALZ](#) [ADP1882-1.0-EVALZ](#) [ADP1883-0.6-EVALZ](#) [ADP197CB-EVALZ](#) [ADP199CB-EVALZ](#) [ADP2102-1.25-EVALZ](#) [ADP2102-1.2-EVALZ](#) [ADP2102-1.875EVALZ](#)