

# Accessories Miniature Relay PT

and similar design: relay heights 29 / 34.6 / 35.2 / 36.6 / 37.6mm



F0233-A

## Features

- Easy replacement of relays on a densely packed DIN rail
- High quality rising clamp terminals
- Captive combination terminal screws
- No reduction of protection class or creepage/clearance with plastic retainer
- Simple plug-in indicator- and protection modules
- White snap-on tags

Accessories for sockets:

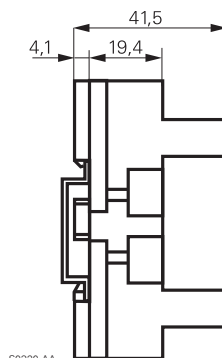
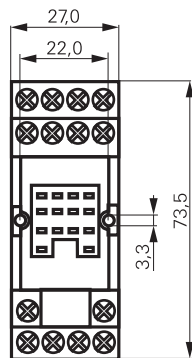
- Retaining clip
- LED- and protection modules
- Marking tags

Dimensions in mm

## PT DIN-rail socket with screw type terminals



F0234-A



S0320-AA



## Technical data

Rated current	4-pole	6 A
	3-pole	10 A
	2-pole	12 A
Rated voltage	250 Vac	
Insulation cat. (VDE 0110b)	C / 250 Vac	
Ambient temperature	-45...+70 °C	
Protection category	IP 20	
Protection against accidental contact meets	VBG 4	
Wire cross section	2 x 2.5 mm <sup>2</sup>	
	with bootlace crimp 2 x 1.5 mm <sup>2</sup>	
Terminal torque	0.5 Nm	
	max. 0.7 Nm	
Packaging unit	10 pcs.	

## DIN-rail socket with screw type terminals

Type		Part Number
<b>PT 78 720</b>	DIN-rail socket with screw type terminals, 2 pole	6-1415034-1
<b>PT 78 730</b>	DIN-rail socket with screw type terminals, 3 pole	9-1415071-1
<b>PT 78 740</b>	DIN-rail socket with screw type terminals, 4 pole	4-1415033-1
<b>PT 78 741</b>	DIN-rail socket with screw type terminals, 4 pole package with protection diode module	5-1415034-1

## Accessories for PT 78 720, PT 78 730, PT 78 740, PT 78 741

Type		Part Number
<b>PT 17 016</b>	Plastic retaining clip PT, relay height 29 mm	5-1415037-1
<b>PT 17 017</b>	Plastic retaining clip, relay height 34.6 mm	7-1415037-1
<b>PT 17 018</b>	Plastic retaining clip, relay height 35.2 mm	8-1415037-1
<b>PT 17 019</b>	Plastic retaining clip, relay height 36.6 mm	9-1415037-1
<b>PT 17 020</b>	Plastic retaining clip, relay height 37.6 mm	0-1415038-1
<b>PT 28 800</b>	Metal retaining clip PT, relay height 29 mm	5-1419111-9
<b>ZG 28 801</b>	Metal retaining clip, relay height 36 mm	1-1393162-5
<b>PT 17 040</b>	Marking tag	6-1415037-1

# Accessories Miniature Relay PT

and similar design: relay heights 29 / 34.6 / 35.2 / 36.6 / 37.6mm

## LED- and Protection Modules for PT 78 720, PT 78 730 and PT 78 740

Easy insertion of module into the socket

Wiring in parallel to the coil

Type		Part Number
<b>PTM T0 0A0</b>	Protection diode (A1+, A2-)	9-1415036-1
<b>PTM T0 0L0</b>	Protection diode (A1-, A2+)	0-1415037-1
<b>PTM U0 524</b>	RC-network 6...60 Vac	1-1415037-1
<b>PTM U0 730</b>	RC-network 110...230 Vac	2-1415037-1
<b>PTM V0 524</b>	Varistor 24 Vac	3-1415037-1
<b>PTM V0 730</b>	Varistor 230 Vac	4-1415037-1

## LED

<b>PTM L0 524</b>	red LED 6...24 Vdc/Vac	6-1415036-1
<b>PTM G0 524</b>	green LED 6...24 Vdc/Vac	3-1415036-1
<b>PTM L0 024</b>	red LED 6...24 Vdc w. prot.diode (A1+, A2-)	5-1415036-1
<b>PTM G0 024</b>	green LED 6...24 Vdc w. prot.diode (A1+, A2-)	2-1415036-1
<b>PTM L1 024</b>	red LED 6...24 Vdc w. prot. diode (A1-, A2+)	8-1415036-1
<b>PTM L0 730</b>	red LED 110...230 Vac	7-1415036-1
<b>PTM G0 730</b>	green LED 110...230 Vac	4-1415036-1



F0231-A



F0232-A

# Accessories Miniature Relay PT

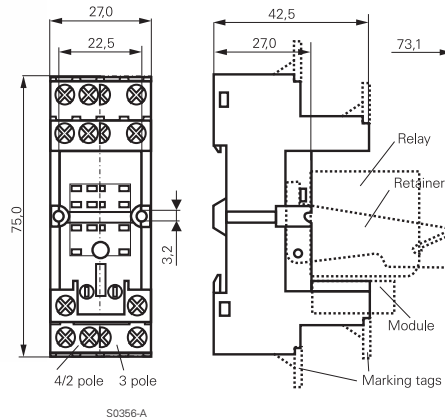
and similar design: relay heights 29 / 34.6 / 35.2 / 36.6 / 37.6mm

Dimensions in mm

## PT DIN-rail socket with screw type terminals



F0192-A



S0356-A



### Technical data

Rated current	4 x 6 A, 3 x 10 A, 2 x 12 A
Rated voltage	300 Vac
Dielectric strength coil/cont.	>4000 V <sub>eff</sub>
Insulation category (VDE 0110b)	C / 250 Vac
Ambient temperature	-45...+70 °C <sup>1)</sup>
Protection category	IP 20
Protection against accidental contact meets	VBG 4
Wire cross section	2 x 2.5 mm <sup>2</sup>
with bootlace crimp	2 x 1.5 mm <sup>2</sup>
Terminal torque	0.5 Nm
max.	0.8 Nm
Packaging unit	10 pcs.

<sup>1)</sup> at rated current to +40 °C, up to +70 °C at 70% of rated current

### DIN-rail socket with screw type terminals

Type		Part Number
<b>PT 78 702</b>	DIN-rail socket with screw type terminals, 2 pole	9-1419111-9
<b>PT 78 703</b>	DIN-rail socket with screw type terminals, 3 pole	0-1419112-1
<b>PT 78 704</b>	DIN-rail socket with screw type terminals, 4 pole	0-1419112-2

### Accessories for PT 78 702, PT 78 703, PT 78 704

Type		Part Number
<b>PT 16 016</b>	Plastic retaining clip PT, relay height 29 mm	3-1419111-8
<b>PT 28 800</b>	Metal retaining clip PT, relay height 29 mm	5-1419111-9
<b>ZG 28 801</b>	Metal retaining clip, relay height 36 mm	1-1393162-5
<b>PT 16 040</b>	Marking tag	3-1419111-9

### LED- and Protection Modules for PT 78 702, PT 78 703, PT 78 704

Easy insertion of module into the socket

Wiring in parallel to the coil

Type		Part Number
<b>RPM T0 0A0</b>	Protection diode 1N4007 <sup>1)</sup>	1-1393161-1
<b>RPM U0 548</b>	RC-network 24...48 Vac	1-1393161-3
<b>RPM U0 730</b>	RC-network 110...230 Vac	1-1393161-4

#### LED

<b>RPM L0 024</b>	red LED 12...24 Vdc w.prot.diode <sup>1)</sup>	0-1393161-4
<b>RPM G0 024</b>	green LED 12...24 Vdc w.prot.diode <sup>1)</sup>	0-1393161-3
<b>RPM L0 524</b>	red LED 12...48 Vdc / Vac	0-1393161-7
<b>RPM G0 524</b>	green LED 12...48 Vdc / Vac	2-1419152-4
<b>RPM L0 110</b>	red LED 60...110 Vdc w.prot.diode <sup>1)</sup>	0-1393161-6
<b>RPM G0 110</b>	green LED 60...110 Vdc w.prot.diode <sup>1)</sup>	2-1419152-3
<b>RPM L0 730</b>	red LED 110...230 Vac	0-1393161-8
<b>RPM G0 730</b>	green LED 110...230 Vac	2-1419152-5

<sup>1)</sup> Standard polarity: A1+, A2-

F0123-A



# Accessories Miniature Relay PT

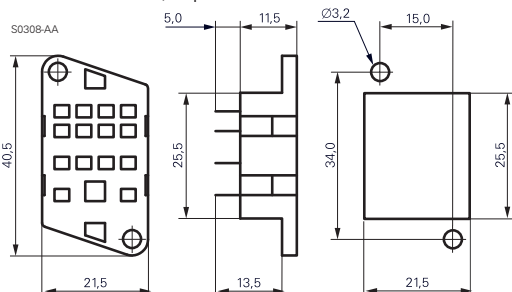
and similar design: relay heights 29 / 34.6 / 35.2 / 36.6 / 37.6mm

Dimensions in mm  
View on solder pins

**PT 78 600** Socket with solder terminals, 4 pole



F0132-A



Chassis cut-out

### Technical data

Rated current	10 A
Rated voltage	250 Vac
Dielectric strength coil/cont.	>1500 V <sub>rms</sub>
Ambient temperature	-40...+70 °C
Packaging unit	25 pcs.

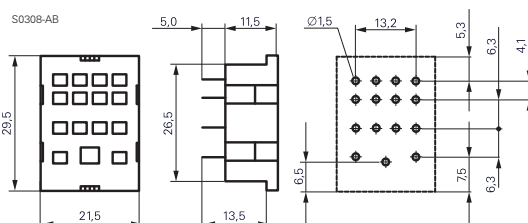
**PT 78 604** 4 pole Socket with PCB terminals

**PT 78 603** 3 pole

**PT 78 602** 2 pole



F0133-A



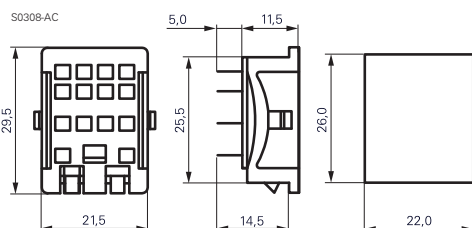
### Technical data

Rated current	10 A
Rated voltage	250 Vac
Dielectric strength coil/cont.	>1500 V <sub>rms</sub>
Ambient temperature	-40...+70 °C
Packaging unit	25 pcs.

**PT 78 601** Socket with solder terminals, 4 pole



F0134-A



Chassis cut-out

### Technical data

Rated current	10 A
Rated voltage	250 Vac
Dielectric strength coil/cont.	>1500 V <sub>rms</sub>
Ambient temperature	-40...+70 °C
Packaging unit	25 pcs.

### PT sockets

Type		Part Number
<b>PT 78 600</b>	Socket with solder terminals, 4 pole	4-1415043-1
<b>PT 78 602</b>	Socket with PCB terminals, 2 pole	5-1415043-1
<b>PT 78 603</b>	Socket with PCB terminals, 3 pole	0-1393162-5
<b>PT 78 604</b>	Socket with PCB terminals, 4 pole	3-1415043-1
<b>PT 78 601</b>	Socket with solder terminals, 4 pole	6-1415043-1

### Accessories for PT 78 600, PT 78 601, PT 78 602, PT 78 603, PT 78 604

Type		Part Number
<b>PT 28 802</b>	Metal retaining clip PT, relay height 29 mm	0-1393162-1
<b>ZG 28 800</b>	Metal retaining clip, relay height 36 mm	1-1393162-4

## X-ON Electronics

Largest Supplier of Electrical and Electronic Components

*Click to view similar products for [Relay Sockets & Fixings](#) category:*

*Click to view products by [TE Connectivity](#) manufacturer:*

Other Similar products are found below :

[M41G](#) [7-1616360-5](#) [8000-DG2-5](#) [GDA12HA](#) [GDA12HD](#) [GDA12SA](#) [GDA12SD](#) [GDA16HD](#) [GDA22HA](#) [GDA95A](#) [GDA95D](#) [GFX20](#)  
[GUA1](#) [GUA2-11](#) [GUA2-20](#) [GUA4-04](#) [GUA4-31](#) [GUM5R](#) [GUR-120](#) [GUR-24](#) [GUR-240](#) [GUR-277](#) [GURX-277](#) [GUW12](#) [GUW95](#)  
[GUZ32S](#) [GUZ63L](#) [GUZ95L](#) [AS-11](#) [AX-4MS-31](#) [AX-4MS-40](#) [2-1608090-3](#) [PB-16](#) [SM2S-61](#) [SQ9Z-C](#) [SYSWINSMP](#) [AR-12MW](#) [AR-400](#)  
[GDA16HA](#) [GDA16SA](#) [GDA16SD](#) [GDA22HD](#) [GDA22SA](#) [GDA22SD](#) [GDA32HA](#) [GDA32HD](#) [GDA32SA](#) [GDA32SD](#) [GDA63A](#) [GDA63D](#)