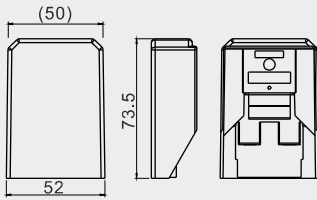


# FUSE HOLDERS

Electric Parts

## R3-72B

Heavy Duty



60A max 12/24/32V DC

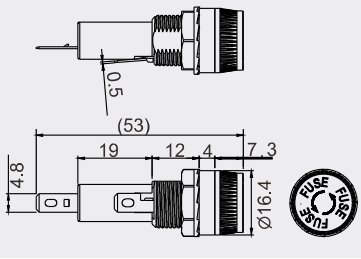
FUSE


 MAXI FUSE

**FEATURES:**

- Material:  
Frame: nylon(UL flame: 94V-0).  
Terminal: plated copper.  
Cover: PP.
- Mounted by screws.

## R3-93



 (4.8mm)0.187" Quick connect

10A 250V AC

 0.5~7.0mm

CAP

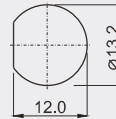
Bayonet type

FUSE 

∅ 6.35\*30mm

∅ 6.35\*31.8mm

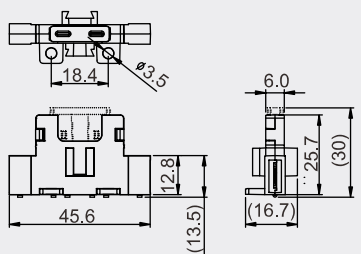
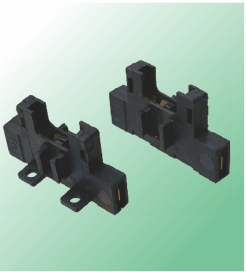
**CUT-OUT**




**FEATURES:**

- Material:  
Frame and cap: PBT(UL flame: 94V-0).  
Cap: phenolic(UL flame: 94V-1).  
Terminal: tin plated brass.
- Mounted by nut.

## R3-98



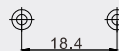
 (6.4mm)0.250" Quick connect

Input: 30A max  
Output: 30A max

FUSE

 BLADE FUSE

**CUT-OUT**



**FEATURES:**

- Material:  
Frame: nylon(UL flame: 94V-0).  
Terminal: brass.
- Input terminal rating: 0.25" terminal (30A max).
- Output terminal rating: 0.25" terminal (30A max).
- Side stackable for multiple block configurations.



All the specifications are subject to change without notice.

## X-ON Electronics

Largest Supplier of Electrical and Electronic Components

*Click to view similar products for [Fuse Holder](#) category:*

*Click to view products by [SCI manufacturer](#):*

Other Similar products are found below :

[570-290-741P40](#) [570-290-751P40](#) [0031.1351.01](#) [020417G](#) [020418E](#) [80910030](#) [8601.2020](#) [9-3557-GP REV A](#) [15600-08-10](#) [BK1-HTC-45M](#)  
[BK/FHN19G](#) [BK/HJM-HH](#) [BK/HKP-CCHH](#) [BK/HKP-E-CC](#) [BK/HKP-E-HH](#) [BK/HKP-EH-HH](#) [BK/HKP-U-HH](#) [BK/HTJ-LES-FUSE](#)  
[HMG-241](#) [2086-1](#) [2193](#) [RTMF-SC](#) [2602](#) [2650](#) [FHN31G1](#) [G4PB8](#) [2660](#) [2799](#) [CQ-209V](#) [345621A](#) [3794](#) [4202](#) [4408](#) [4413](#) [4423](#) [4482](#)  
[4532](#) [4537](#) [TSD1404-12](#) [BK/FHN31G1](#) [BK/HKP-H-CC](#) [BK/HKP-JQ-BB](#) [BK/HKP-JQW-BB](#) [BK/HKP-N-HH](#) [BK/HKP-S-CC](#) [BK/HKP-W-](#)  
[BBHH](#) [BP/HHS](#) [BPHHU](#) [55900008011](#) [C1933](#)