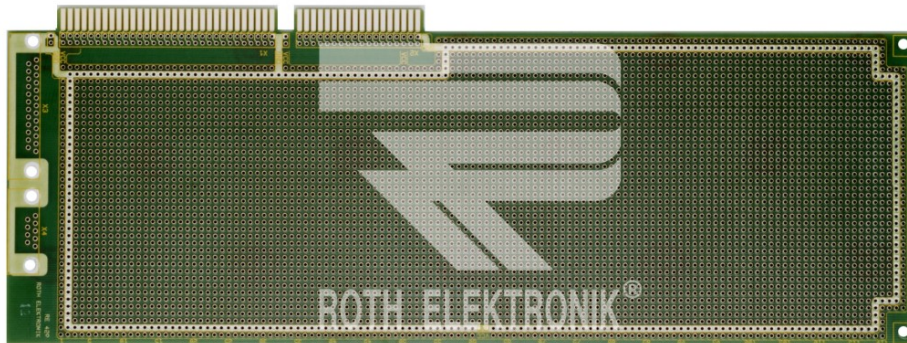


prototype card AT and compatible



#### RE429-LF

- microprocessor card for the establishment of PC extensions
- system card for the quick building-up of interfaces, data acquisition, memory expansion, graphic complements, etc.
- the micro-card can be provided with a 25 and 9 channel D-subminiature appliance plug for additional I/O transfer
- VACREL solderings stop mask at component and solder side
- potential path for VCC and GND
- all borings are plated through holes
- clear soldering dot screen field
- basic material: EPOXY fibre-glass reinforced laminated FR4, 1.5 mm double-sided 35 µm CU (pth)
- plug contacts:
  - direct 2 x 31 channel, screen 2.54 mm, gold-plated 1.5 µm
  - direct 2 x 18 channel, screen 2.54 mm, gold-plated 1.5 µm
- basic grid 2.54 x 2.54 mm
- working temperature max. 150° C.
- soldering bath proof: 260° C. > 50 Sek.
- size 114 x 333 mm

## X-ON Electronics

Largest Supplier of Electrical and Electronic Components

*Click to view similar products for PCBs & Breadboards category:*

*Click to view products by Roth Elektronik manufacturer:*

Other Similar products are found below :

[8004](#) [8029](#) [1268-12](#) [1268-10](#) [1320833-1](#) [923252-R](#) [923303I\(20 PACK\)](#) [3410](#) [3396](#) [15107](#) [15101](#) [15076](#) [15072](#) [8006](#) [1268-19](#) [1268-20](#)  
[8026](#) [1239-19](#) [SBBTH1520-1](#) [SBBTH1506-1](#) [SBBTH4080-1](#) [SBBTH3030-1](#) [SBBTH1512-1](#) [SBBTH1508-1](#) [SBBSM2120-1](#) [SBB830-](#)  
[QTY25](#) [SBB2808-1](#) [SBB2805-1](#) [SBB1605-1](#) [SBB1602-1](#) [SBB1002-1](#) [3426](#) [32P15WE](#) [SBBTH3040-1](#) [SBB0004-1](#) [RE013-LF](#) [RE014-LF](#)  
[RE015-LF](#) [RE1040](#) [RE1210-LF](#) [RE1330-LF](#) [RE200-C3](#) [RE317-HP](#) [RE320-LFDS](#) [RE438-LF](#) [RE500-HP](#) [RE510-S2](#) [RE510-S3](#) [RE900-02](#)  
[RE900-04](#)