

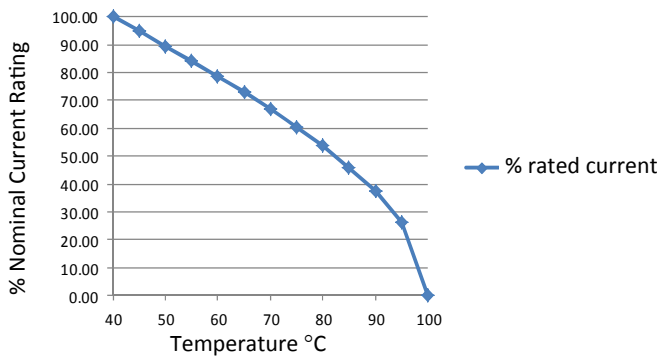
# RES30 Chassis Mounted Filter

## High Differential Mode and High Performance

Roxburgh's RES30 single phase chassis mounting filters offer high differential attenuation. These high performance filters are suitable for a broad range of applications including noisy environments where increased filter performance is required.



Temperature Derating Curve for EMC Filters  
Rated at 40°C Ambient and 100°C Maximum



Call us on:  
Tel: +44 (0) 1724 273200

### Features:

- Single phase high performance
- High differential attenuation
- UL approved E191581
- For use from DC to 400Hz
- 1 Amp to 30 Amp

### Benefits:

- Compact size for rated current
- Fast-on, screw or wire terminations
- Quick and Easy Mounting
- Available from UK Stock

### Application Examples:

- Lighting
- Electrical and electronic equipment
- Consumer goods
- Household equipment
- Building automation
- Machinery
- Electronic data/communication processing equipment
- Office automation

Full technical specification on page 2

Performance Curves on page 3

Other options in this range on page 4

**DEM Manufacturing**  
Deltron Emcon House  
Hargreaves Way  
Sawcliffe Industrial Park  
Scunthorpe, North Lincolnshire.  
DN15 8RF



Tel: 44 (0) 1724 273200

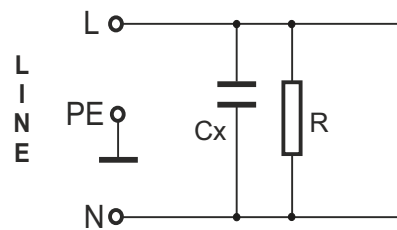
Fax: 44 (0) 1724 280353

Email: sales@dem-uk.com

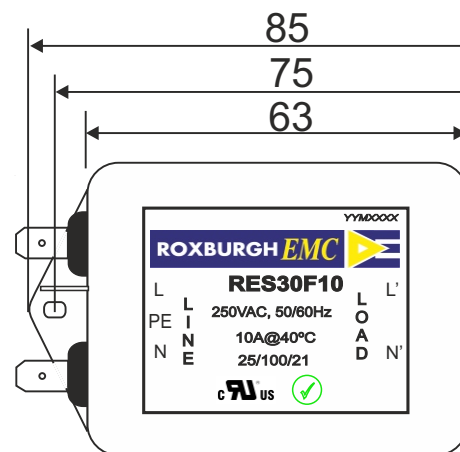
Web: www.dem-uk.com/roxburgh

<b>RES30F10</b>	<b>Rev. 0</b>
<b>CHARACTERISTICS:</b>	
Rated Voltage:	250VAC max
Rated Current at Ambient:	10A @ 40°C
Operating Frequency:	DC-60HZ
Climatic Class (IEC60068-1):	25/100/21
Temperature Range:	-25°C to +100°C
Over load Current:	1.5 x Rated Ct. for 1 Min
Operational Leakage current : ( at 230VAC and Total C +/-20%)	0.73 mA max
Worst case Leakage current : ( N interrupted and Total C +/-20%)	<1.11 mA max
DCR @ 25°C (+/-25%) :	150 mΩ
Test Voltage (100%) for 2 sec:-	P-P: 1100VDC
	P-GND: 3000VDC
Ingress Protection:	IP 20
Weight (Approximate):	190 gr
<b>FILTER PARAMETERS:</b>	
Total Inductance (P-P'+N-N') @10KHz:	8mH +50%,-30%
Total Capacitance (P-P/P-N) @1KHz:	0.94μF +/- -20%
Total Capacitance (P/N-GND) @1KHz:	9.4nF +/- -20%
Total Resistance (P-P/P-N):	0.68M Ω +/- -10%
Total Resistance (P/N-GND):	
<b>APPROVALS:</b> REACH RoHS UL	APPROVED BY AJAY Date: 15-03-2014

**CIRCUIT DIAGRAM:**



**MECHANICAL DIMENSION (mm)**



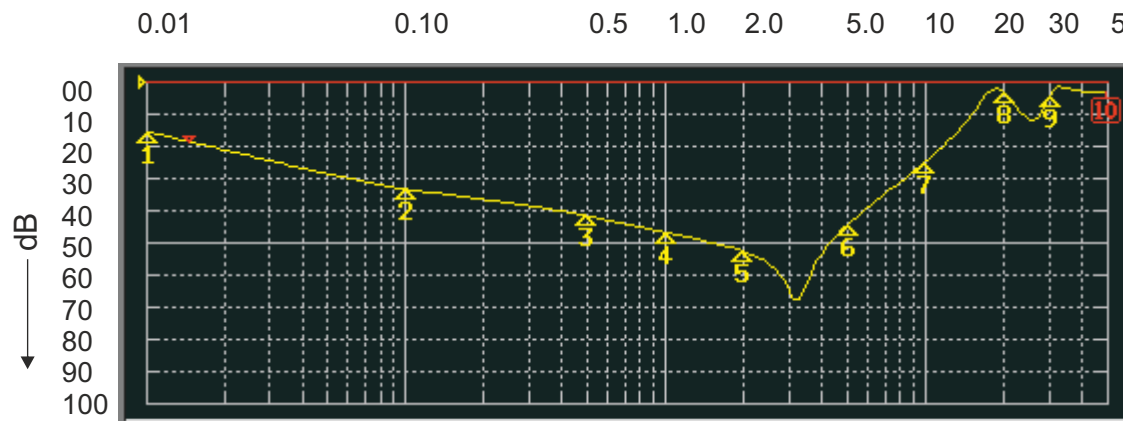
**Note:**

Housing matl. Fe with  
Fast-On Terminal ( 6.3  
Connect

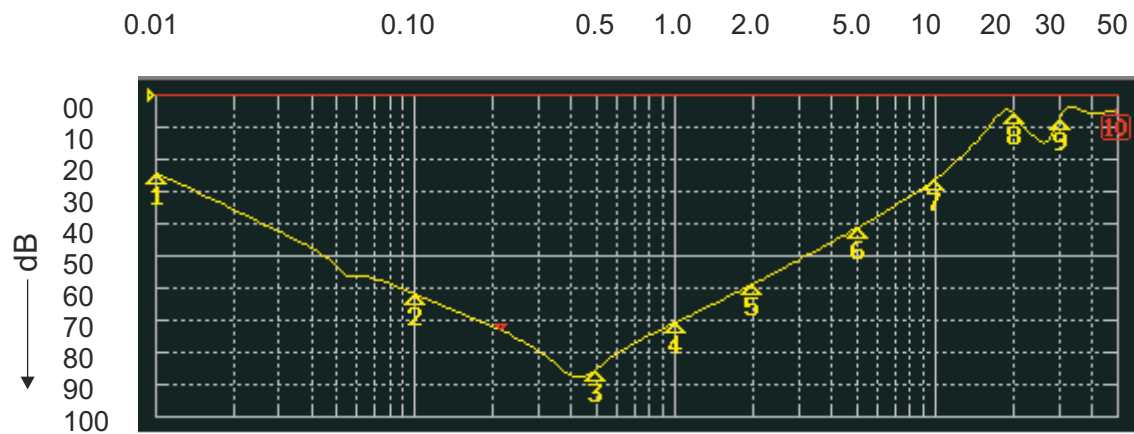
TOLERANCE: +/-1.0 mm

ROXBURGH ELECTRONICS LTD  
FILTER INSERTION LOSS CHARACTERISTICS  
CISPR 17 - 50 OHM METHOD

# RES30F10



COMMON MODE



DIFFERENTIAL MODE

# RES30 Chassis Mounted Filter

## High Differential Mode and High Performance

### Options Available:

Part Number	Rated Current @40°C	Leakage Current @ 230V/50Hz	Inductance $\Sigma L$	Capacitance $\Sigma Cx$	Capacitance $\Sigma Cy$	Resistance $\Sigma R$	Connection Type	
RES30F01	1	0.34	20	0.44	4.4	1000	F	W
RES30F03	3	0.52	14	0.66	6.6	1000	F	W
RES30F06	6	0.73	8	0.94	9.4	680	F	W
RES30F10	10	0.73	8	0.94	9.4	680	F	W
RES30F16	16	0.87	4	2.00	20	330	F	W
RES30F20	20	0.87	4	2.00	20	330	F	W
RES30S20	20	0.87	4	2.00	20	330		W S
RES30S30	30	0.87	2	2.00	20	330		S



Call us on:

Tel: +44 (0) 1724 273200

**DEM Manufacturing**  
 Deltron Emcon House  
 Hargreaves Way  
 Sawcliffe Industrial Park  
 Scunthorpe, North Lincolnshire.  
 DN15 8RF



Tel: 44 (0) 1724 273200

Fax: 44 (0) 1724 280353

Email: sales@dem-uk.com

Web: www.dem-uk.com/roxburgh

## X-ON Electronics

Largest Supplier of Electrical and Electronic Components

*Click to view similar products for [Fixed Inductors](#) category:*

*Click to view products by [ROXBURGH EMC](#) manufacturer:*

Other Similar products are found below :

[MLZ1608M6R8WTD25](#) [MLZ1608N6R8LT000](#) [MLZ1608N3R3LTD25](#) [MLZ1608N3R3LT000](#) [MLZ1608N150LT000](#)

[MLZ1608M150WTD25](#) [MLZ1608M3R3WTD25](#) [MLZ1608M3R3WT000](#) [MLZ1608M150WT000](#) [MLZ1608A1R5WT000](#)

[MLZ1608N1R5LT000](#) [B82432C1333K000](#) [PCMB053T-1R0MS](#) [PCMB053T-1R5MS](#) [PCMB104T-1R5MS](#) [CR32NP-100KC](#) [CR32NP-](#)

[151KC](#) [CR32NP-180KC](#) [CR32NP-181KC](#) [CR32NP-1R5MC](#) [CR32NP-390KC](#) [CR32NP-3R9MC](#) [CR32NP-680KC](#) [CR32NP-820KC](#)

[CR32NP-8R2MC](#) [CR43NP-390KC](#) [CR43NP-560KC](#) [CR43NP-680KC](#) [CR54NP-181KC](#) [CR54NP-470LC](#) [CR54NP-820KC](#) [CR54NP-8R5MC](#)

[MGDQ4-00004-P](#) [MGDU1-00016-P](#) [MHL1ECTTP18NJ](#) [MHL1JCTTD12NJ](#) [PE-51506NL](#) [PE-53601NL](#) [PE-53630NL](#) [PE-53824SNLT](#) [PE-](#)

[62892NL](#) [PE-92100NL](#) [PG0434.801NLT](#) [PG0936.113NLT](#) [PM06-2N7](#) [PM06-39NJ](#) [HC2LP-R47-R](#) [HC2-R47-R](#) [HC3-2R2-R](#) [HC8-1R2-R](#)