

REV	DESCRIPTION	ENGR DATE	TOLERANCES UNLESS NOTED	FILE #	DLMSP	DWN: P.B.	APP:	DT: 04-07-95	DT:	04-07-95	DT:	04-07-95
A	CONVERTED TO ACAD	PB 04.07.95	ANG=±1°	RE:	RICHCO, INC.	RICHCO INC. PO BOX 804238, CHICAGO, 60680 (773) 539-4060						
B	TITLE WAS MINI-SUPPORT POST, SPECIAL	PB 05.09.95	FRAC=±1/64	MAT'L:	SEE NOTES	SEE TABLE						
C	MAT'L RMS-19 ADDED	J.L. 12.29.97	.XX=±.010	PART #								
D	CHANGED FILE NUMBER	SM 05.01.01	.XXX=±.005	FINAL								

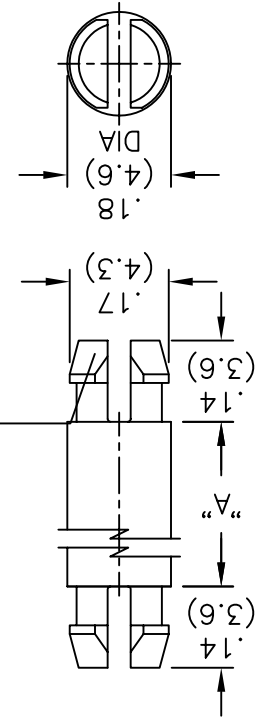
TITLE: DUAL LOCKING MINI SUPPORT POST

DWG IN (MM)  IN (MM) 



REV	DESCRIPTION	ENGR DATE
A	CONVERTED TO ACAD	PB 04.07.95
B	TITLE WAS MINI-SUPPORT POST, SPECIAL	PB 05.09.95
C	MAT'L RMS-19 ADDED	J.L. 12.29.97
D	CHANGED FILE NUMBER	SM 05.01.01

NOTES:  
 1. MAT'L: NYLON 66 (RMS-01).  
 FLAME RETARDANT: NYLON (RMS-19),  
 BY SPECIAL ORDER.  
 2. COLOR: NATURAL.



TO SNAP-LOCK IN A .152 (3.86)  
 ±.002 (0.05) DIA. HOLE, IN A  
 .062 (1.57) THICK BOARD/CHASSIS  
 (BOTH ENDS)

PART NO.	DIM. "A" ±.015(0.4)
DLMSP-2-01	1/8 (3.2)
DLMSP-3-01	3/16 (4.8)
DLMSP-4-01	1/4 (6.4)
DLMSP-5-01	5/16 (7.9)
DLMSP-6-01	3/8 (9.5)
DLMSP-7-01	7/16 (11.1)
DLMSP-8-01	1/2 (12.7)
DLMSP-9-01	9/16 (14.3)
DLMSP-10-01	5/8 (15.9)
DLMSP-12-01	3/4 (19.1)
DLMSP-14-01	7/8 (22.2)
DLMSP-16-01	1 (25.4)
DLMSP-18-01	1-1/8 (28.6)
DLMSP-20-01	1-1/4 (31.8)
DLMSP-22-01	1-3/8 (34.9)
DLMSP-24-01	1-1/2 (38.1)

## X-ON Electronics

Largest Supplier of Electrical and Electronic Components

*Click to view similar products for [Electrical Enclosure Accessories](#) category:*

*Click to view products by [Richco](#) manufacturer:*

Other Similar products are found below :

[60121-06-028 C-325 Black](#) [71884-04-028 CM3-100 Black](#) [71884-18-028 LH43-200 Black](#) [71884-24-028 LH75-200 Black](#) [71885-01-028 CM6-150 Black](#) [72459-02-028 DM-3 BLACK](#) [81501-01-000 XPL, 9VB Black](#) [82402-01 PT-8 ALUM](#) [1335GSKT3](#) [14101FP-PK](#) [CB-1263-BT](#) [1611512-4](#) [HB-11498](#) [RC-7775](#) [HM BLACK PANEL](#) [61033-01-000](#) [115123-01-508 CN-RL RS](#) [115124-01-508 CN-XRL XRS](#) [115119-01-000 CN-RL RS](#) [115123-01-000 CN-RL RS](#) [60121-04-028 C-275 Black](#) [60128-01-072](#) [60222-01-028 CM6-225 Black](#) [60272-01-028 CM3-150 Black](#) [60851-01-028 CM69-120 Black](#) [62291-502-000-KEU-10-BLK](#) [62452-01-000 HML-9VB, EB Black](#) [71884-25-028 LH89-130 Black](#) [AXX2POSTBRCKT](#) [FUPMESK](#) [71884-23-028 LH75-130 Black](#) [1317GSKTSC](#) [8G813V40389](#) [DVA.1-10-15-M4-10-70](#) [DVC.1-60-49-60-M10-28-55](#) [DVC.1-15-8,5-15-M4-10-40](#) [DVC.1-20-12-30-M6-18-40](#) [DVC.1-30-18-25-M8-20-40](#) [DVC.1-35-31-15-M8-20-40](#) [DVC.1-35-31-15-M8-20-70](#) [DVC.1-75-60-40-M12-37-70](#) [DVC.2-30-22-20-M8-20-55](#) [DVC.2-40-30-25-M8-23-55](#) [DVC.2-75-60-40-M12-37-55](#) [DVC.2-21-16-22-M6-18-40](#) [DVC.2-40-20-48-M8-23-40](#) [DVC.2-40-32-50-M8-23-40](#) [DVC.2-20-14-19-M6-18-70](#) [DVC.2-25-18-20-M6-18-70](#) [DVC.3-20-14-20-M6-40](#) [DVC.3-20-14-30-M6-40](#)