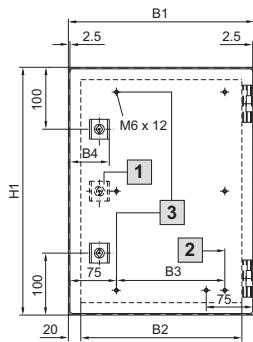
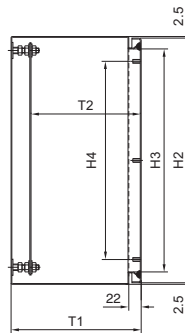


Compact enclosures AE

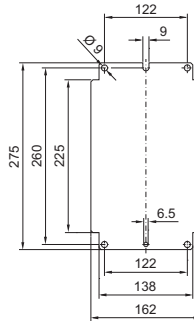
AE 1001.X00 – AE 1016.X00



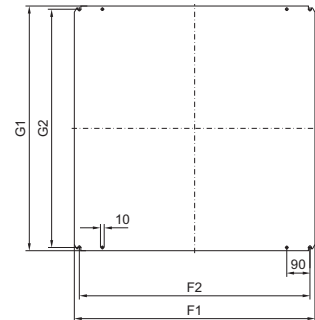
- 1 For AE 1001.X00, AE 1002.X00, AE 1003.X00, AE 1004.X00, AE 1005.X00, AE 1006.X00, AE 1009.X00, AE 1011.X00 only one cam lock in the centre and without central bolt
- 2 50 for AE 1001.X00, AE 1002.X00
- 3 Do not apply to AE 1001.X00, AE 1002.X00



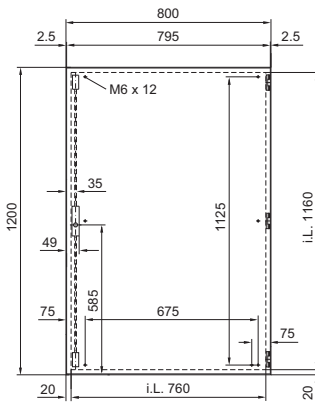
Mounting plates
AE 1001.X00,
AE 1002.X00



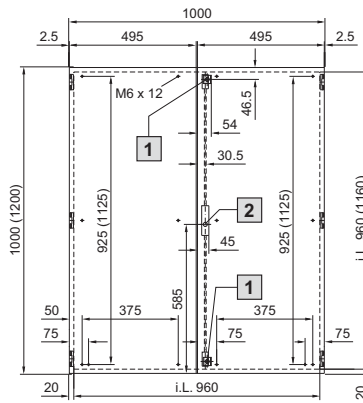
AE 1003.X00 – AE 1016.X00
(installation position of mounting plate for AE 1005.500/.600 rotated through 90°)



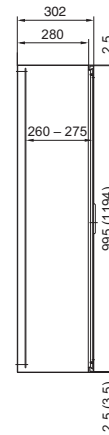
AE 1017.X00



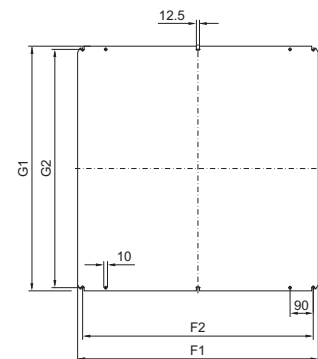
AE 1018.X00 (AE 1019.X00)



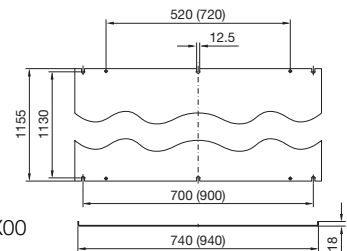
- 1 Cam for AE 1018.X00
 - 2 Locking rod for AE 1019.X00
- i.L. = Clearance width



Mounting plates
AE 1018.X00



AE 1017.X00 (AE 1019.X00)



Dimensions in brackets for AE 1019.X00

Model No. AE	Width dimensions mm				Height dimensions mm				Depth dimensions mm		Mounting plates mm				Material thickness mm		
	B1	B2	B3	B4	H1	H2	H3	H4	T1	T2	F1	F2	G1	G2	Enclosure	Door	Mounting plate
1001.X00	200	167	-	56	300	295	274	225	122	100	-	-	-	-	1.25	1.5	2.0
1002.X00	200	167	-	56	300	295	274	225	157	135	-	-	-	-	1.25	1.5	2.0
1003.X00	300	260	175	66	300	295	260	225	212	168 - 184	254	215	275	250	1.38	1.5	2.0
1004.X00	380	340	250	66	300	295	260	225	157	113 - 129	334	295	275	250	1.38	1.5	2.0
1011.X00	380	340	250	66	300	295	260	225	212	168 - 184	334	295	275	250	1.38	1.5	2.0
1005.X00	300	260	175	66	380	375	340	275	212	168 - 184	334	295	275	250	1.38	1.5	2.0
1006.X00	380	340	250	66	380	375	340	275	212	168 - 184	334	295	355	330	1.38	1.5	2.0
1015.X00	400	360	275	66	500	495	460	425	212	168 - 184	354	315	475	450	1.38	1.5	2.0
1007.X00	500	460	375	66	500	495	460	425	212	168 - 184	449	410	470	445	1.38	2.0	2.5
1013.X00	500	460	375	66	500	495	460	425	302	258 - 274	449	410	470	445	1.50	2.0	2.5
1008.X00	380	340	250	66	600	595	560	525	212	168 - 184	334	295	570	545	1.38	1.5	2.5
1009.X00	600	560	475	66	380	375	340	275	212	168 - 184	549	510	355	330	1.38	1.5	2.5
1010.X00	600	560	475	66	600	595	560	525	212	168 - 184	549	510	570	545	1.38	2.0	2.5
1012.X00	600	560	475	66	760	755	720	675	212	168 - 184	549	510	730	705	1.38	2.0	3.0
1014.X00	760	720	625	66	760	755	720	675	302	258 - 274	704	665	730	705	1.50	2.0	3.0
1016.X00	800	760	675	66	1000	955	960	925	302	258 - 274	739	700	955	930	1.50	2.0	3.0
1017.X00	800	-	-	-	1200	-	-	-	302	-	-	-	-	-	1.50	2.0	3.0
1018.X00	1000	-	-	-	1000	-	-	-	302	-	939	900	955	930	1.50	2.0	3.0
1019.X00	1000	-	-	-	1200	-	-	-	302	-	-	-	-	-	1.50	2.0	3.0

X-ON Electronics

Largest Supplier of Electrical and Electronic Components

Click to view similar products for [Mounting Fixings](#) category:

Click to view products by [Rittal](#) manufacturer:

Other Similar products are found below :

[5912235-2](#) [007310](#) [007541](#) [6-141-P](#) [620HA038NF09](#) [620HA038NF11](#) [CTJ420E028-513](#) [M81714/60-12-01](#) [M81714/60-22-01](#) [L/C](#)
[MA1EAF1200](#) [70-584649-01P](#) [71-074914-006](#) [71-215091-8S](#) [712HA170B23128-N](#) [71-344699-4S](#) [71-441549-19S](#) [71-441864-5S](#) [71-](#)
[490451-4H](#) [EX-13-3-B-16-325PN](#) [75-69116-8S](#) [75-69211-3P](#) [75-69220-27S](#) [75-69224-5S](#) [75-69614-2S](#) [770-006A109](#) [770-006A109R](#) [770-](#)
[006A207](#) [770-006A208W1](#) [770-006A209](#) [770-006A306](#) [770-006A703W1](#) [770-006A704](#) [770-006A704W1](#) [770-006A705](#) [770-006A706](#)
[770-006A706W1](#) [770-006A707](#) [770-006A709](#) [770-007A203](#) [770-007A203W1](#) [770-007A204W1](#) [770-007A207W1](#) [770-007A703](#) [770-](#)
[007A704W1](#) [770-007A706](#) [770-007A707W1](#) [770-010Y208](#) [770-010Y308](#) [770-010Y705](#) [770-010Y706](#)