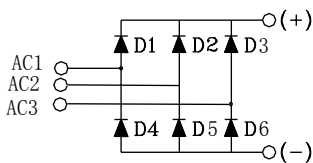
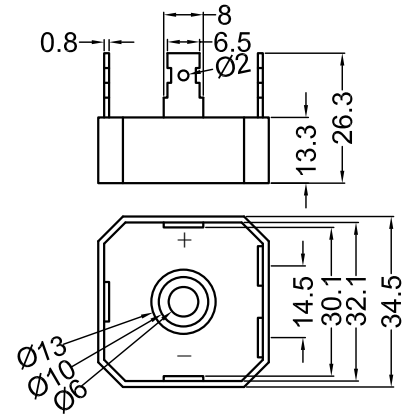


# S3PDB35NXX

## High Voltage Phase Bridge Rectifiers



Dimensions in mm (1mm=0.0394")



Type	V <sub>RSM</sub> V	V <sub>RRM</sub> V
S3PDB35N06	700	600
S3PDB35N08	900	800
S3PDB35N12	1300	1200
S3PDB35N14	1500	1400
S3PDB35N16	1700	1600

Symbol	Test Conditions	Maximum Ratings	Unit
I <sub>dav</sub>	T <sub>C</sub> =55°C, module	35	A
I <sub>FSM</sub>	T <sub>VJ</sub> =45°C V <sub>R</sub> =0 t=10ms (50Hz), sine t=8.3ms (60Hz), sine	310 400	A
	T <sub>VJ</sub> =T <sub>VJM</sub> V <sub>R</sub> =0 t=10ms(50Hz), sine t=8.3ms(60Hz), sine	275 350	
I <sup>2</sup> t	T <sub>VJ</sub> =45°C V <sub>R</sub> =0 t=10ms (50Hz), sine t=8.3ms (60Hz), sine	1350 1200	A <sup>2</sup> s
	T <sub>VJ</sub> =T <sub>VJM</sub> V <sub>R</sub> =0 t=10ms(50Hz), sine t=8.3ms(60Hz), sine	1130 1030	
T <sub>VJ</sub> T <sub>VJM</sub> T <sub>stg</sub>		-55...+150 150 -55...+125	°C
V <sub>ISOL</sub>	50/60Hz, RMS I <sub>ISOL</sub> ≤1mA t=1min t=1s	2500 3000	V~
M <sub>d</sub>	Mounting torque (M4)	2 ± 15%	Nm
Weight	typ.	22	g



# S3PDB35NXX

## Half-Wave Bridge Rectifier

Symbol	Test Conditions	Characteristic Values	Unit
$I_R$	$V_R=V_{RRM}; T_{VJ}=25^{\circ}C$ $V_R=V_{RRM}; T_{VJ}=T_{VJM}$	$\leq 5$ $\leq 1000$	$\mu A$
$V_F$	$I_F=12A; T_{VJ}=25^{\circ}C$	$\leq 1.1$	V
$V_{TO}$	For power-loss calculations only	0.8	V
$r_T$	$T_{VJ}=T_{VJM}$	3.867	$m\Omega$
$R_{thJC}$	per diode per module	1.3 0.325	K/W
$R_{thJK}$	per diode per module	1.5 0.375	K/W
$d_s$	Creeping distance on surface	10	mm
$d_A$	Creepage distance in air	9.4	mm
$a$	Max. allowable acceleration	50	$m/s^2$

### FEATURES

- \* Rating to 1600V PRV
- \* High efficiency
- \* Glass passivated chip junction
- \* Electrically isolated metal case for maximum heat dissipation

### APPLICATIONS

- \* Supplies for DC power equipment
- \* Input rectifiers for PWM inverter
- \* Battery DC power supplies
- \* Field supply for DC motors

### ADVANTAGES

- \* Easy to mount one screw
- \* Space and weight savings
- \* Improved temperature and power cycling



# S3PDB35NXX

## Three Phase Bridge Rectifiers

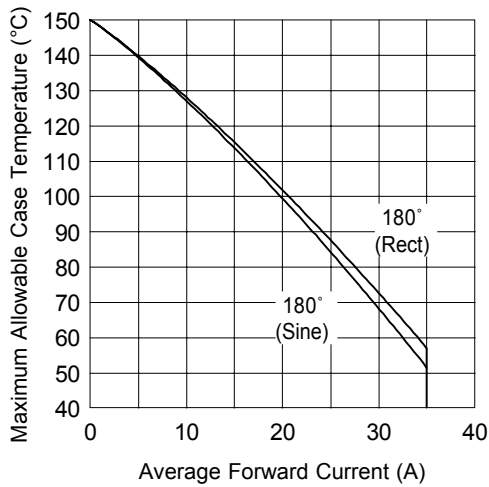


Fig. 1 - Current Ratings Characteristics

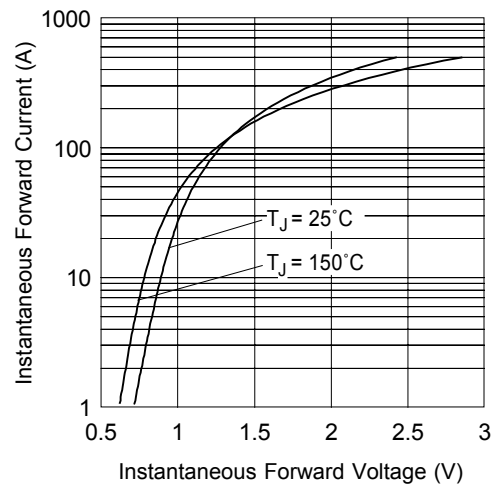


Fig. 2 - Forward Voltage Drop Characteristics

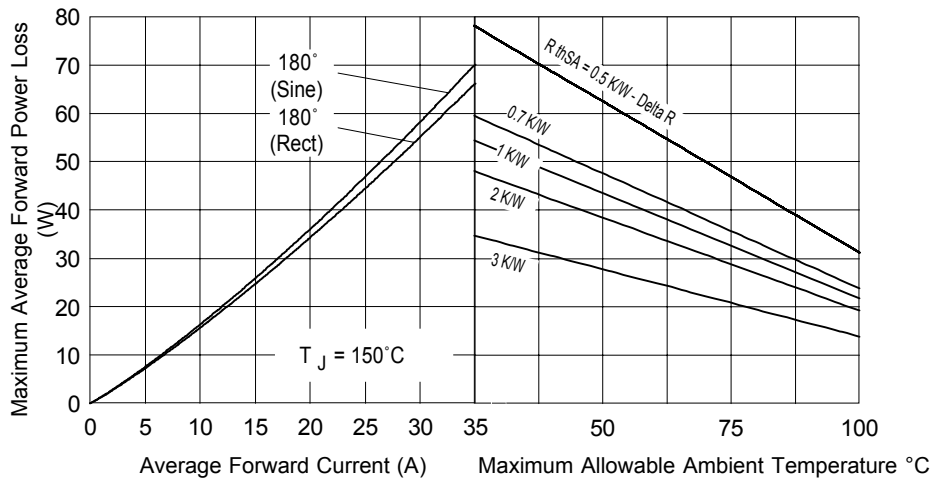


Fig. 3 - Total Power Loss Characteristics

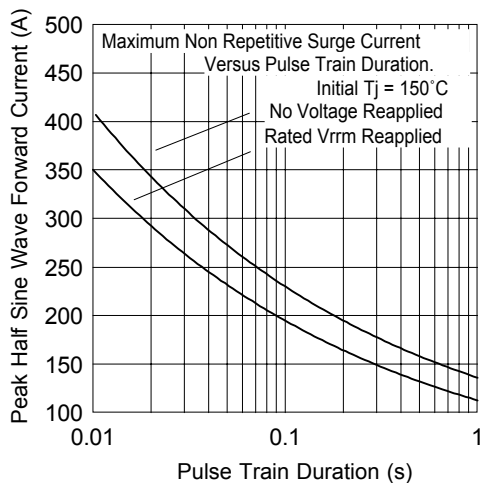


Fig. 4 - Maximum Non-Repetitive Surge Current

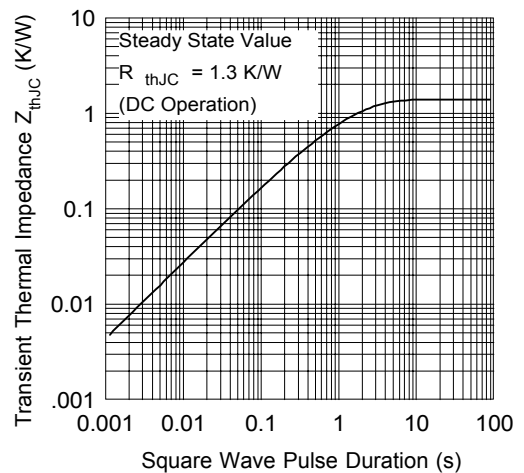


Fig. 5- Thermal Impedance  $Z_{thJC}$  Characteristic



## X-ON Electronics

Largest Supplier of Electrical and Electronic Components

*Click to view similar products for [Bridge Rectifiers](#) category:*

*Click to view products by [Sirectifier](#) manufacturer:*

Other Similar products are found below :

[G3SBA60-E351](#) [GBJ1504-BP](#) [GBU10B-BP](#) [GBU15J-BP](#) [GBU15K-BP](#) [GBU4A-BP](#) [GBU4D-BP](#) [GBU6B-E3/45](#) [GSIB680-E3/45](#) [DB101-BP](#) [DF10SA-E345](#) [RMB2S](#) [RCG](#) [APT30DF100HJ](#) [APT60DF20HJ](#) [B2S-E3/80](#) [BU1506-E351](#) [BU15085S-E345](#) [BU1508-E3/45](#) [BU1510-E3/45](#) [RS404GL-BP](#) [RS405GL-BP](#) [G3SBA20-E3/51](#) [G5SBA20-E3/51](#) [G5SBA60-E3/51](#) [GBJ1502-BP](#) [GBL02-E351](#) [GBL10-E3/45](#) [GBU10J-BP](#) [GBU4J-BP](#) [GBU4K-BP](#) [GBU8B-E3/45](#) [GBU8D-BP](#) [GBU8J-BP](#) [GSIB1520-E3/45](#) [MB1510](#) [MB352W](#) [MB6M-G](#) [B2M-E345](#) [B40C7000A](#) [B500C7000A](#) [MP5010W-BP](#) [MP501W-BP](#) [MP502-BP](#) [BR1005-BP](#) [BR101-BP](#) [BU1006-E345](#) [BU12065S-E3/45](#) [BU1508-E3/51](#) [BU2006-E3/45](#) [BU2008-E345](#)