

Valve connectors - SACC-VB-3CON-M16/BI-1L-SV 24V - 1452233

Please be informed that the data shown in this PDF Document is generated from our Online Catalog. Please find the complete data in the user's documentation. Our General Terms of Use for Downloads are valid (<http://phoenixcontact.com/download>)



Valve connector, 3-pos., construction BI, 1 LED, with protective circuit, screw connection, M16 cable gland



Key Commercial Data

| | |
|--------------------------------------|---------------|
| Packing unit | 1 STK |
| GTIN | |
| GTIN | 4046356536400 |
| Weight per Piece (excluding packing) | 0.026 kg |
| Custom tariff number | 85366990 |
| Country of origin | Hungary |

Technical data

Dimensions

| | |
|-------------------------------|---------------|
| External diameter | 6 mm ... 8 mm |
| Central screw valve connector | M3 x 33,5 |

Ambient conditions

| | |
|---------------------------------|-------------------------------|
| Ambient temperature (operation) | -25 °C ... 60 °C (valve plug) |
| Degree of protection | IP65 |

General

| | |
|------------------------------|------------|
| Rated current at 40°C | 1.5 A |
| Rated voltage | 24 V |
| Number of positions | 3 |
| Insulation resistance | > 2 GΩ |
| Status display | Yellow LED |
| Protective circuit/component | Varistor |
| Overvoltage category | II |
| Degree of pollution | 3 |

Valve connectors - SACC-VB-3CON-M16/BI-1L-SV 24V - 1452233

Technical data

General

| | |
|-----------------------------|--|
| Connection method | Screw connection |
| Conductor cross section | 0.25 mm ² ... 1.5 mm ² |
| Conductor cross section AWG | 24 ... 16 |
| Insertion/withdrawal cycles | 50 (Valve connector) |
| Torque | 1.8 Nm ±0.2 Nm (Pressure screw) |
| | 0.4 Nm ±0.4 Nm (Central screw) |
| | 0.2 Nm ±0.1 Nm (Contact screw) |

Material

| | |
|--|------|
| Flammability rating according to UL 94 | HB |
| Valve plug contact material | CuZn |
| Valve plug contact surface material | CuSn |
| Material housing valve plug | PA |
| Sealing material | NBR |

Standards and Regulations

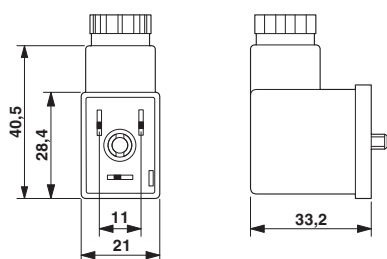
| | |
|--|----|
| Flammability rating according to UL 94 | HB |
|--|----|

Environmental Product Compliance

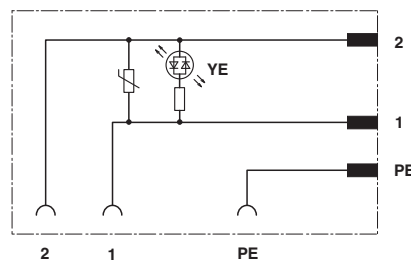
| | |
|------------|---|
| China RoHS | Environmentally friendly use period: unlimited = EFUP-e |
| | No hazardous substances above threshold values |

Drawings

Dimensional drawing



Circuit diagram



Classifications

eCl@ss

| | |
|------------|----------|
| eCl@ss 4.0 | 27140815 |
| eCl@ss 4.1 | 27140815 |
| eCl@ss 5.0 | 27143423 |
| eCl@ss 5.1 | 27143423 |
| eCl@ss 6.0 | 27143423 |
| eCl@ss 7.0 | 27449001 |

Valve connectors - SACC-VB-3CON-M16/BI-1L-SV 24V - 1452233

Classifications

eCl@ss

| | |
|------------|----------|
| eCl@ss 8.0 | 27440104 |
| eCl@ss 9.0 | 27440105 |

ETIM

| | |
|----------|----------|
| ETIM 4.0 | EC002062 |
| ETIM 5.0 | EC002062 |
| ETIM 6.0 | EC002925 |

UNSPSC

| | |
|---------------|----------|
| UNSPSC 6.01 | 31251501 |
| UNSPSC 7.0901 | 31251501 |
| UNSPSC 11 | 31251501 |
| UNSPSC 12.01 | 31251501 |
| UNSPSC 13.2 | 32151909 |

Approvals

Approvals

Approvals

EAC / EAC

Ex Approvals

Approval details

| | | |
|-----|--|--------------------------|
| EAC | | RU C- DE.AI30.B.01102 |
|-----|--|--------------------------|

| | | |
|-----|--|---------------|
| EAC | | EAC-Zulassung |
|-----|--|---------------|

Accessories

Accessories

Cable by the meter

Valve connectors - SACC-VB-3CON-M16/BI-1L-SV 24V - 1452233

Accessories

Cable reel - SAC-3P-100,0-PUR/0,5 - 1457393



Cable ring, PUR black, 3-pos., conductor colors: black 1-2/green-yellow, cable length: 100 m

Phoenix Contact 2017 © - all rights reserved
<http://www.phoenixcontact.com>

X-ON Electronics

Largest Supplier of Electrical and Electronic Components

Click to view similar products for [Heavy Duty Power Connectors](#) category:

Click to view products by [Phoenix Contact](#) manufacturer:

Other Similar products are found below :

[1424439](#) [1424438](#) [09330062652](#) [2-8675P1](#) [580129-2](#) [605601-1](#) [6340G1](#) [6341G1](#) [6360G1](#) [6373G1](#) [6374g2](#) [6396G1](#) [647757-1](#) [66394-4](#) [6643411-1](#)
[6646058-2](#) [6646137-1](#) [6646138-1](#) [6646348-1](#) [6646479-1](#) [6646608-1](#) [6646786-1](#) [6651091-1](#) [6651525-1](#) [6651529-1](#) [6651778-1](#) [6651788-1](#) [696465-](#)
[1](#) [696475-1](#) [73000005059](#) [73000005326](#) [73000005349](#) [73080255059](#) [73080965046](#) [765-15-0080A](#) [765-16-0080B](#) [789.700-44](#) [789.700-54](#) [80-1010](#)
[80-9](#) [827381-1](#) [829992-1](#) [902-77-02113](#) [PL00U-301-10D10](#) [PL00V-301-10D10](#) [PM103MOOLOO](#) [PM16S1620S32-50](#) [PM206MRALHB](#)
[PM212MOOLOO](#) [PM309FOOLOO](#)