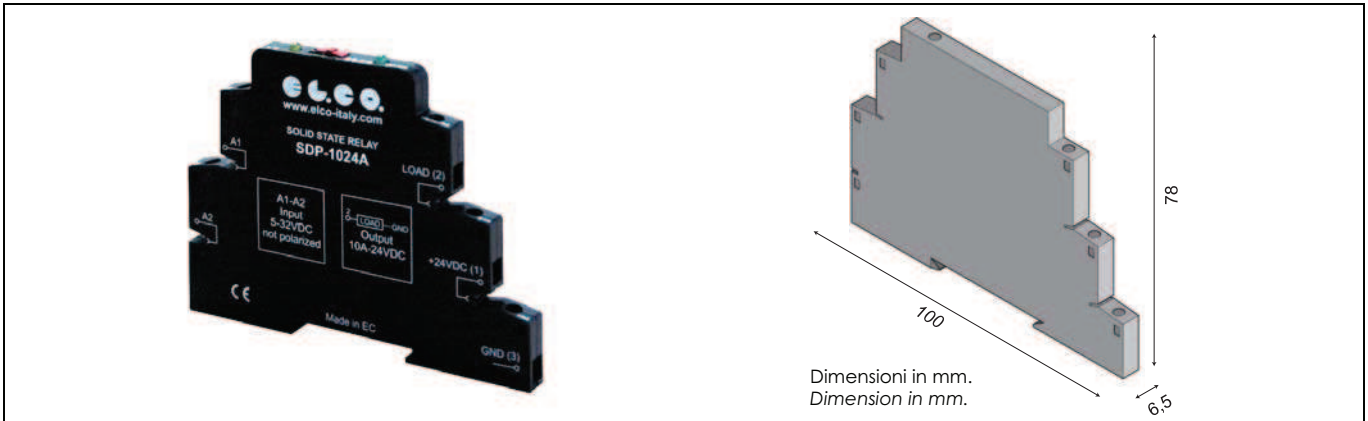


RELE' STATICI SERIE SDP / SAP CON PROTEZIONE ELETTRONICA SDP / SAP SERIES SOLID STATE RELAYS WITH ELECTRONICS PROTECTION



Rev. 06-2011

TABELLA SELEZIONE RELE' - RELAY SELECTION TABLE			
Tipo di commutazione zero crossing - Uscita 240VAC Zero Crossing commutation - Output 240VAC			
Uscita / output TRIAC			
Modello Model	Tensione di uscita Output voltage	Tensione di ingresso Input voltage	Corrente di uscita Output current
SAP-04240A	12-275VAC	5-30VDC	4A
SAP-04240B	12-275VAC	8-30VAC/DC	(Ta=60°C)
Tipo di commutazione istantanea - Uscita 24VDC Instantaneous commutation - Output 24VDC Uscita / output Mosfet			
Modello Model	Tensione di uscita Output voltage	Tensione di ingresso Input voltage	Corrente di uscita Output current
SDP-0324A	6-36VDC	5-32VDC	3A (Ta=60°C)
SDP-0324B		8-30VAC/DC	
SDP-0624A	5-36VDC	5-32VDC	6A (Ta=60°C)
SDP-0624B		8-30AC/VDC	
SDP-1024A	5,5-36VDC	5-32VDC	10A (Ta=60°C)
SDP-1024B		8-30AC/VDC	

DATI TECNICI USCITA PER MODELLO SDP OUTPUT TECHNICAL DATA FOR SDP MODEL			
Tensione nominale Nominal voltage	24V DC	24V DC	24V DC
Corrente uscita Output current Ta=60°C	3A	6A	10A
Range tensione di carico Load voltage range	6-36VDC	5-36VDC	5,5-36VDC
Tensione di blocco allo stato di off Off-state block voltage	36V DC	36V DC	36V DC
Corrente limite di corto circuito Short circuit current limit	6A	17A	40A
Caduta tensione in uscita Output voltage drop	< 850mV	< 800mV	< 400mV
Perdita di corrente allo stato di off Off-state leakage current	100uA	100uA	100uA
Corrente minima di funzionamento Minimum working current	1mA Vout=24VDC	1mA Vout=24VDC	1mA Vout=24VDC

- * Comando ingresso non polarizzato
- * Non polarized input
- * Led tensione ingresso
- * Led input voltage
- * Led segnalazione intervento protezione elettronica
- * Signalling led for electronics protection intervention
- * Corrente nominale 3-6-10 A DC o 4A AC
- * Rated operational current up to 3-6-10A DC or 4A AC
- * Per modelli in DC protezione da corto circuito(Reset con interruttore per modello uscita 10A), sovraccarico, sovracorrente e sovratemperatura con restart
- * Short circuit protection(Reset through switch for 10A model output), over load, over current, over temperature protections with restart for DC model.
- * Per modelli in AC protezione da sovraccarico e sovratemperatura con restart
- * Over load and over temperature protections with restart for AC model
- * Esclusione segnale ingresso tramite interruttore
- * Exclusion input signal through switch
- * Commutazione zero crossing per modelli in AC o istantanea per modelli in DC
- * Zero crossing commutation for models with AC voltage output or instantaneous for DC voltage output models
- * Tensione di uscita da 12 a 275 VAC o da 5 a 36V DC
- * Output voltage from 12 to 275 VAC or from 5 to 36V DC
- * Isolamento ingresso uscite 2500V
- * 2500V input-output insulation
- * Protezione in uscita da picchi tensione superiori a 36V per modelli in DC
- * Output protection from voltage peak higher than 36V for DC model
- * Protezione con filtro RC per modelli in AC
- * RC filter protection for AC models
- * Relè statico larghezza 6,5mm
- * Solid state relays breadth 6,5mm
- * Aggancio per barra Din
- * Drawbar for Din bar

CONFORMI ALLE NORMATIVE EC:
EC REFERENCE STANDARDS :
HD419.2SI / CEI 17.38 / IEC 158-2 / CEE 73-23 CEE 93-68

ACCESSORI - ACCESSORIES
ACCESSORI - ACCESSORIES pag. 42
VARISTORI (MOV) - METAL OXIDE VARISTORS (MOV.) pag. 42



1 - RELÈ ALLO STATO SOLIDO
1 - SOLID-STATE RELAYS

**DATI TECNICI USCITA PER MODELLO SAP
OUTPUT TECHNICAL DATA FOR SAP MODEL**

Tensione nominale <i>Nominal voltage</i>	240VAC
Corrente uscita $T_a=60^\circ\text{C}$ <i>Output current</i>	4A
Range tensione di carico <i>Load voltage range</i>	12-275VAC
Picco ripetitivo allo stato di OFF <i>off-state voltage repetitive peak</i>	600 VAC
Corrente di spunto non ripetitiva <i>Non repetitive surge peak on state current</i> $t=8,3\text{ms}$	6A
I ² t per scelta fusibile <i>I²t rating for fuse choice</i> $t=10\text{ms}$	36A ² /S
Tempo critico salita tensione allo stato di off <i>Critical rate of rise of off-state voltage</i> dv/dt	400V/ μS
Caduta tensione in uscita <i>Output voltage drop</i>	<1,2V
Perdita di corrente allo stato di off <i>Off-state leakage current</i>	1mA
Corrente minima di funzionamento <i>Minimum working current</i>	50mA

DATI TECNICI ENTRATA - INPUT TECHNICAL DATA

Modello <i>Model</i>	SDP-0324A	SDP-0624A	SDP-1024A	SAP-04240A	SDP-0624B	SDP-1024B	SAP-04240B	SAP-04240B
Tensione ingresso <i>Input voltage</i>	5-32 VDC			5-30VDC	8-30 VAC/DC			
Corrente di pilotaggio <i>Control current range</i>	3-38mA		2,5-34mA	4-23mA	11-52mA		11-50mA	11-39mA
Tensione di innesco <i>Control pick-up voltage</i>	5VDC				8VAC/DC			
Tensione di disinnescio <i>Control drop-out voltage</i>	<4,5VDC		<3VDC	<4,5VDC	<7,5VAC/DC		<3,5VAC/DC	<6,5VAC/DC

**DATI TECNICI ENTRATA/USCITA MODELLO SAP
MODEL SAP INPUT/OUTPUT TECHNICAL DATA**

Modello <i>Model</i>	SAP-04240A	SAP-04240B
Massimo ritardo chiusura per commutazione zero crossing <i>Maximum closing delay for zero crossing commutation</i>	10ms	20ms
Massimo ritardo apertura per commutazione zero crossing-istantanea <i>Maximum opening delay for zero crossing-instantaneous</i>	10ms	20ms
Isolamento <i>Isolation voltage</i>	2500V	

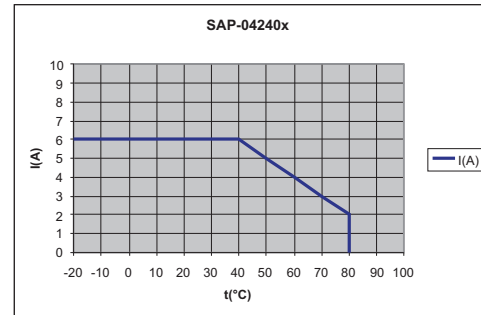
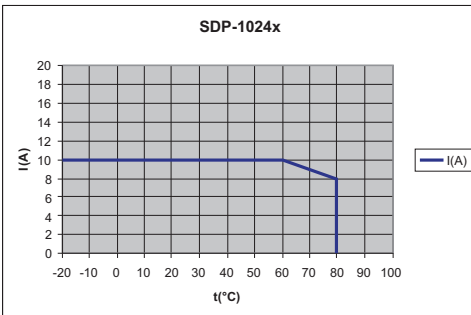
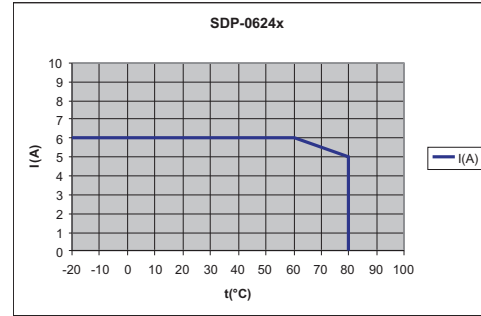
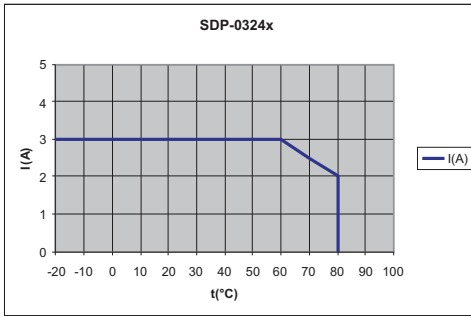
DATI TERMICI - THERMAL DATA

Temperatura di funzionamento <i>Operating-temperature</i>	-20/+80°C
Temperatura di stoccaggio <i>Storage temperature</i>	-40/100°C

DATI TECNICI ENTRATA/USCITA MODELLO SDP - SDP MODEL INPUT/OUTPUT TECHNICAL DATA

Modello <i>Model</i>	SDP-0324A	SDP-0624A	SDP-1024A	SDP-0324B	SDP-0624B	SDP-1024B
Tempo di innesco (t=on) $V_{in}=24\text{VDC}$ $V_{out}=24\text{VDC}$ <i>Pick-up time t=(on)</i> $I_{out}=\text{nominal current}$	<400 μs		<200 μs	<4ms		<3ms
Tempo di disinnescio t=(off) $V_{in}=24\text{VDC}$ $V_{out}=24\text{VDC}$ <i>Drop-out time t=(off)</i> $I_{out}=\text{nominal current}$	<200 μs		<400 μs	<10ms		<23ms
Isolamento <i>Isolation voltage</i>	2500V					

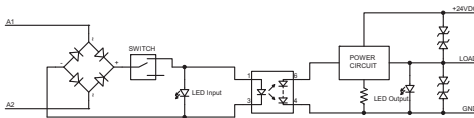
CURVE DI DERATING - DERATING CURVE



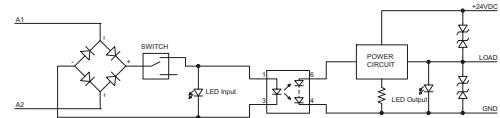
In caso di più SSR montati fianco a fianco si deve considerare un derating della corrente di uscita.
In case of many SSRs side by side, a derating of output current should be considered.

**CONNESSIONI
CONNECTORS**

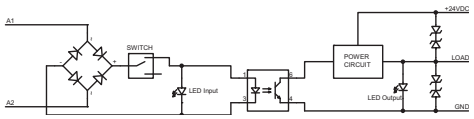
SDP-0324x



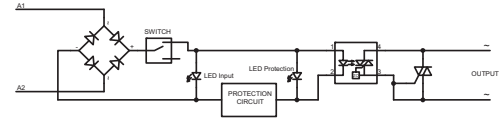
SDP-0624x



SDP-1024x

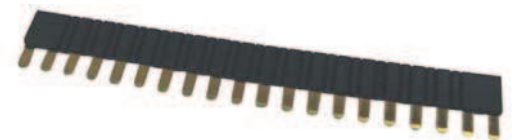


SAP-04240x



**ACCESSORI
ACCESSORIES**

Pettine a 20 poli 20 Pole comb	Modello / Model
	EZD-20P



X-ON Electronics

Largest Supplier of Electrical and Electronic Components

Click to view similar products for [General Purpose Relays](#) category:

Click to view products by [Elco](#) manufacturer:

Other Similar products are found below :

[APF30318](#) [JVN1AF-4.5V-F](#) [PCN-105D3MHZ](#) [5JO-10000S-SIL](#) [5JO-1000CD-SIL](#) [5JO-400CD-SIL](#) [LY2S-AC220/240](#) [LYQ20DC12](#)
[6031007G](#) [6131406HQ](#) [6-1393099-3](#) [6-1393099-8](#) [6-1393122-4](#) [6-1393123-2](#) [6-1393767-1](#) [6-1393843-7](#) [6-1415012-1](#) [6-1419102-2](#) [6-](#)
[1423698-4](#) [6-1608051-6](#) [6-1608067-0](#) [6-1616170-6](#) [6-1616248-2](#) [6-1616282-3](#) [6-1616348-2](#) [6-1616350-1](#) [6-1616350-8](#) [6-1616358-7](#) [6-](#)
[1616359-9](#) [6-1616360-9](#) [6-1616931-6](#) [6-1617039-1](#) [6-1617052-1](#) [6-1617090-2](#) [6-1617090-5](#) [6-1617347-5](#) [6-1617353-3](#) [6-1617801-8](#) [6-](#)
[1617802-2](#) [6-1618107-9](#) [6-1618248-4](#) [M83536/1-027M](#) [CX-4014](#) [MAHC-5494](#) [MAVCD-5419-6](#) [703XCX-120A](#) [7-1393100-5](#) [7-1393111-7](#)
[7-1393144-5](#) [7-1393767-8](#)