

Metallic conduits

• SC Galvanised Steel Conduit

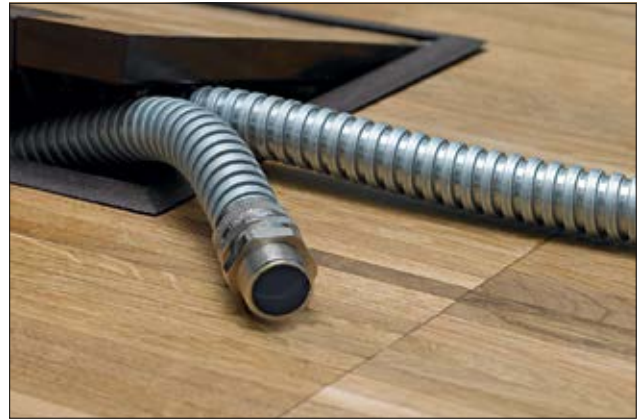
General purpose flexible steel conduit offers high mechanical protection and is typically used in machines, plants, underfloor wiring, data cabling and protection of hydraulic or pneumatic conduits.

Features and Benefits

- High compression, tensile and impact strength
- Very flexible

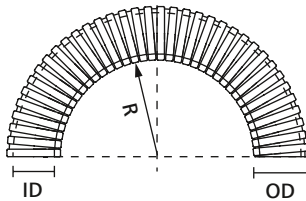


One Step to the Web!



HeloGuard SC Galvanised Steel Conduit.

MATERIAL	Galvanised Steel (GS)
Operating Temperature	-100 °C to +300 °C



HeloGuard metallic conduit

TYPE	Nominal Ø	Outside Ø (OD)	Inside Ø (ID)	Min. Bending Radius (R)	Weight (g/m)	Reel Length	Colour	Article-No.
SC10	10	9.1	6.8	25	110	10 m	Metal (ML)	166-30110
	10	9.1	6.8	25	110	50 m	Metal (ML)	166-30100
SC12	12	13.2	10.0	30	113	10 m	Metal (ML)	166-30111
	12	13.2	10.0	30	113	50 m	Metal (ML)	166-30101
SC16	16	16.4	12.9	40	152	10 m	Metal (ML)	166-30112
	16	16.4	12.9	40	152	25 m	Metal (ML)	166-30102
SC20	20	20.6	16.9	45	295	10 m	Metal (ML)	166-30113
	20	20.6	16.9	45	295	25 m	Metal (ML)	166-30103
SC25	25	24.6	21.1	55	321	10 m	Metal (ML)	166-30114
	25	24.6	21.1	55	321	25 m	Metal (ML)	166-30104
SC32	32	32.0	28.1	70	450	10 m	Metal (ML)	166-30115
	32	32.0	28.1	70	450	25 m	Metal (ML)	166-30105
SC40	40	42.5	37.6	80	519	10 m	Metal (ML)	166-30116
	40	42.5	37.6	80	519	25 m	Metal (ML)	166-30106
SC50	50	53.2	48.4	90	802	10 m	Metal (ML)	166-30117
	50	53.2	48.4	90	802	25 m	Metal (ML)	166-30107
SC63	63	62.5	57.5	115	836	10 m	Metal (ML)	166-30108
SC75	75	77.0	70.0	150	1,137	10 m	Metal (ML)	166-30109

All dimensions in mm. Subject to technical changes.

Other reel lengths available on request. Minimum Order Quantity (MOQ) may differ from package content.

X-ON Electronics

Largest Supplier of Electrical and Electronic Components

Click to view similar products for [Non-Heat Shrink Tubing and Sleeves](#) *category:*

Click to view products by [Hellermann](#) *manufacturer:*

Other Similar products are found below :

[CTA-0053](#) [8429-9](#) [8445-7.5](#) [8450](#) [120-116-1-1-09BE](#) [120-116-1-1-09BF](#) [120-116-1-1-09BP](#) [120-116-1-1-12BE](#) [120-116-1-1-12BP](#) [120-123-06](#)
[120-123-10](#) [120-125-12BL](#) [120-125-12R](#) [120-125-20R](#) [120-126-09](#) [120-126-09BL](#) [120-126-12](#) [120-126-12BL](#) [120-126-52](#) [120-126-52BL](#) [120-](#)
[104-12](#) [120-105-1-1-06BE](#) [120-105-1-1-06CE](#) [120-116-1-1-06BP](#) [120-116-1-1-10BP](#) [120-116-1-1-12BF](#) [120-123-12](#) [120-125-09](#) [120-125-12](#) [120-](#)
[125-12Y](#) [120-125-52BL](#) [120-S002-12](#) [HC1B-7008-0375-0](#) [120-S001-09](#) [120-S002-09](#) [121-101-1-1-56BFC](#) [121-101-1-1-64BFC](#) [RAY-90-3.0\(100\)](#)
[20675-2](#) [8S42-100FR-CS8184](#) [SAS-115-1-1048-1X](#) [SAS-160-1-1048-1X](#) [25T-GB](#) [RAY-103-10.0\(100\)](#) [RAY-103-4.0\(100\)](#) [4627-S](#) [3-1991136-0](#)
[561-SL1000NYGY](#) [561-SL1000PP](#) [561-SL250FRPP](#)