

CLIFF

SMD DC SOCKETS



Designed for surface mounting assembly. Available as discrete or taped / reeled parts. Characteristics are similar to our versions with through hole legs. Supplied loose (STD) or taped in 1000 / Reel (to order).

Specification (All models)

Insertion / Withdrawal force: 0.3 - 2.0 kgf

Contact Resistance:

(4 terminal method 1KHz @ <100mA)

Initial - Plug / Contact <50mΩ

Contact / Shunt <30mΩ

After life test - Plug / Contact <100mΩ

Contact / Shunt <60mΩ

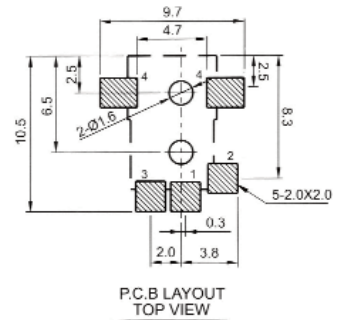
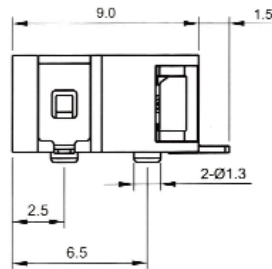
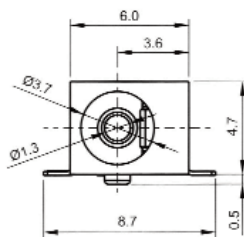
Electrical Rating: DC10 - 2A / 12V

DC8 - 1A / 12V

DC-8S 1.3mm Pin



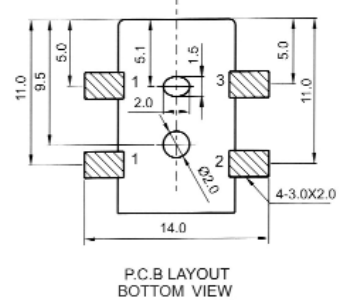
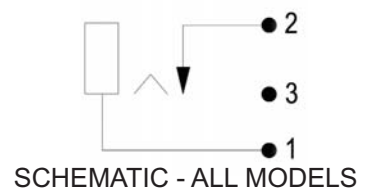
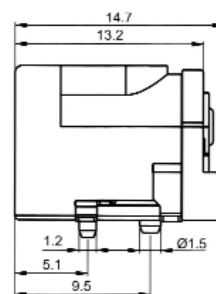
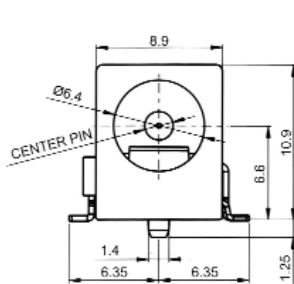
Part No. FC68145S Taped FC68145T



DC-10AS 2.1mm Pin DC-10BS 2.5mm Pin



Part No. FC68148S Part No. FC68149S Add Suffix 'T' for taped.



For further information, contact: sales@cliffuk.co.uk

X-ON Electronics

Largest Supplier of Electrical and Electronic Components

Click to view similar products for [Cliff manufacturer:](#)

Other Similar products are found below :

[FC7105](#) [CIH206011](#) [CIH22105](#) [FCR7360L](#) [FM686813](#) [CP30152](#) [CP30173](#) [CP30176](#) [CP30178](#) [CP30179](#) [CP30180](#) [CP30186](#) [FCR7942](#) [CL-SFE/1](#)
[FILTERS](#) [CP30220X](#) [FCR7360B](#) [FM686816](#) [CIH29917](#) [CP30170](#) [CP30174](#) [CIH684216](#) [FD72082](#) [FCR2062](#) [CP30171](#) [CP30182](#) [CP30184](#)
[CIH3021](#) [FM686806](#) [CIH29950](#) [CIH29916](#) [CP30150](#) [CP30500C](#) [FCR1121](#) [CL1115](#) [CP30181](#) [CP30202M](#) [CP30202M3B](#) [K85 CAPS BLUE](#)
[PLAIN](#) [CIH299450](#) [CL2075S](#) [FM65015](#) [CL2076S](#) [CL1734](#) [300PN](#) [DCPP3](#) [FC7106](#) [FCR7960RB](#) [FM686842](#) [CP30202M3](#) [CIH3006](#)