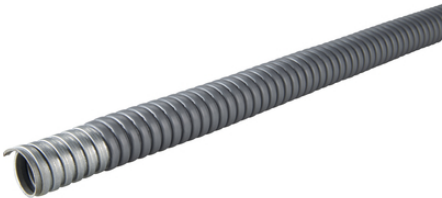


## SILVYN® AS-P

SILVYN® AS-P is a helically wound, one-hooked metal conduit with PVC jacket



SILVYN® MSK-M

SILVYN®  
US/US-M + US-ED  
IP 65

SILVYN® US-EDU-A6

SILVYN® US MS-DR



Waterproof



Robust



Mechanical resistance

### Benefits

Protects against liquids  
High-tensile  
High crush-resistance  
Flexible  
High mechanical resistance

### Application range

Mechanical engineering  
Plant engineering  
Automation technology  
Used in areas where liquids are present  
Applications with high mechanical stress

### Norm references / Approvals

VDE  
DIN 49012, complies with design I according to DIN EN IEC 61386-23  
In EX-area according to EN 1127-1

## SILVYN® AS-P

### Product Make-up

Helically-wound metal protective conduit with interlocked profile  
PVC sheath

### Technical Data

Classification ETIM 5:	ETIM 5.0 Class-ID: EC001179 ETIM 5.0 Class-Description: Protective metallic hose
Classification ETIM 6:	ETIM 6.0 Class-ID: EC001179 ETIM 6.0 Class-Description: Protective metallic hose
Certifications:	IEC EN 61386-23
Colour delivered:	Grey
Material:	Inner conduit: steel, galvanised Outer sheath: PVC
Temperature range:	-25°C to +80°C Short-term: up to +100°C

### Note

Photographs and graphics are not to scale and do not represent detailed images of the respective products.  
Prices are net prices without VAT and surcharges. Sale to business customers only.

Article number	Nominal size	ID x OD mm	Bending radius (mm)	Suitable for SILVYN® MSK-M	Suitable for SILVYN® US-M
SILVYN® AS-P					
64400010	10	7 x 10	32	12 x 1,5	10 x 1,0
64400020	14	10 x 14	40	16 x 1,5	12 x 1,5
64400030	17	13 x 17	45	20 x 1,5	16 x 1,5
64400040	19	15 x 19	52	-	-
64400050	21	17 x 21	58	25 x 1,5	20 x 1,5
64400060	27	22 x 27	72	32 x 1,5	25 x 1,5
64400070	36	29 x 36	98	40 x 1,5	32 x 1,5
64400080	45	38 x 45	118	50 x 1,5	40 x 1,5
64400090	56	49 x 56	140	63 x 1,5	50 x 1,5
SILVYN® AS-P 10 M					
64400100	10	7 x 10	32	12 x 1,5	10 x 1,0
64400110	14	10 x 14	40	16 x 1,5	12 x 1,5
64400120	17	13 x 17	45	20 x 1,5	16 x 1,5
64400130	19	15 x 19	52	-	-
64400140	21	17 x 21	58	25 x 1,5	20 x 1,5
64400150	27	22 x 27	72	32 x 1,5	25 x 1,5
64400160	36	29 x 36	98	40 x 1,5	32 x 1,5
64400170	45	38 x 45	118	50 x 1,5	40 x 1,5
64400180	56	49 x 56	140	63 x 1,5	50 x 1,5

Last Update (09.04.2018)

©2018 Lapp Group - Technical changes reserved

Product Management [www.lappkabel.de](http://www.lappkabel.de)

You can find the current technical data in the corresponding data sheet.

PN 0456 / 02\_03.16

## X-ON Electronics

Largest Supplier of Electrical and Electronic Components

*Click to view similar products for [Non-Heat Shrink Tubing and Sleeves](#) category:*

*Click to view products by [Lapp Kabel](#) manufacturer:*

Other Similar products are found below :

[CTA-0053](#) [8429-9](#) [8445-7.5](#) [8450](#) [120-116-1-1-09BE](#) [120-116-1-1-09BF](#) [120-116-1-1-09BP](#) [120-116-1-1-12BE](#) [120-116-1-1-12BP](#) [120-123-06](#) [120-123-10](#) [120-125-12BL](#) [120-125-12R](#) [120-125-20R](#) [120-126-09](#) [120-126-09BL](#) [120-126-12](#) [120-126-12BL](#) [120-126-52](#) [120-126-52BL](#) [120-104-12](#) [120-105-1-1-06BE](#) [120-105-1-1-06CE](#) [120-116-1-1-06BP](#) [120-116-1-1-10BP](#) [120-116-1-1-12BF](#) [120-123-12](#) [120-125-09](#) [120-125-12](#) [120-125-12Y](#) [120-125-52BL](#) [120-S002-12](#) [HC1B-7008-0375-0](#) [120-S001-09](#) [120-S002-09](#) [121-101-1-1-56BFC](#) [121-101-1-1-64BFC](#) [RAY-90-3.0\(100\)](#) [20675-2](#) [8S42-100FR-CS8184](#) [SAS-115-1-1048-1X](#) [SAS-160-1-1048-1X](#) [25T-GB](#) [RAY-103-10.0\(100\)](#) [RAY-103-4.0\(100\)](#) [4627-S](#) [3-1991136-0](#) [561-SL1000NYGY](#) [561-SL1000PP](#) [561-SL250FRPP](#)